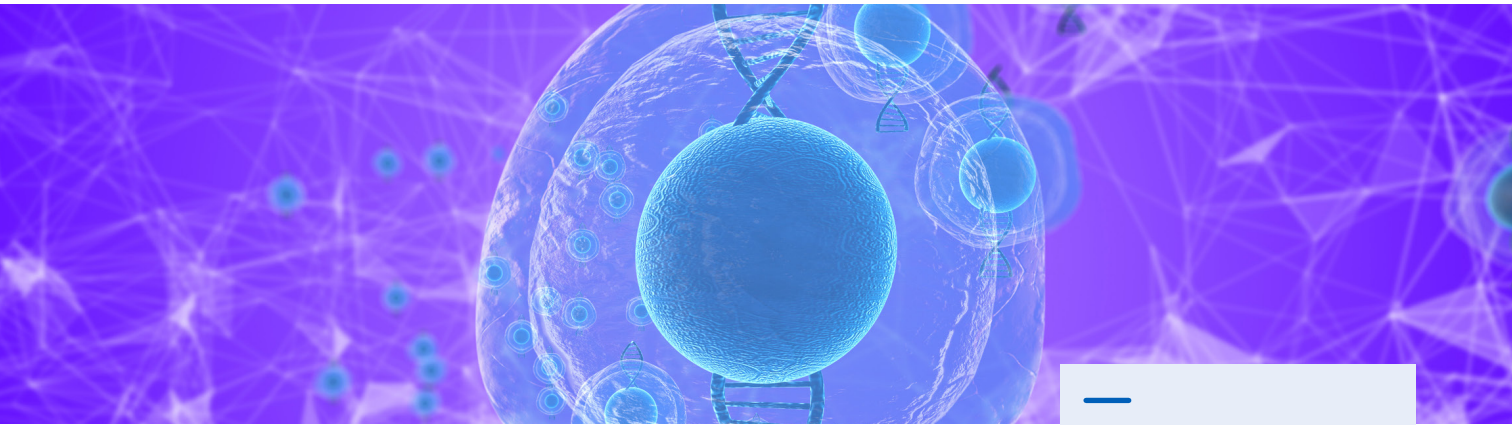


Stem cell research



GE develops and provides technology that enables pharmaceutical companies, clinicians, and academic researchers to develop new therapies, and diagnostics. This research includes the study, manipulation, and storage of stem cells as a resource for drug discovery, diagnostics, regenerative medicine, and manufacturing of cell-based therapies. GE may use adult stem cells (hematopoietic and mesenchymal) and pluripotent stem cells derived from both embryonic and adult sources for the development of predictive drug-screening applications, diagnostics, and for technologies supporting the development and manufacture of cell therapies.

Regenerative medicine and cell therapies are changing the face of medicine, enabling doctors to address not just the symptoms of a disease, but also its underlying causes, essentially teaching the body to heal itself. The pace of current developments is promising, with some researchers reporting unprecedented clinical outcomes. However, the field still has many issues to overcome, and GE's tools and technologies are helping customers make these new therapies affordable and part of mainstream clinical practice. GE's sophisticated diagnostics platforms accelerate scientific discovery through high-content biomarker assessment.

GE has ongoing and planned research that uses both adult-derived stem cells and established ES (embryonic stem) cell lines to develop drug research technologies, diagnostics, and regenerative medicine/cell therapy technologies.

GE conducts research in accordance with U.S. federal guidelines, and any other applicable international legislation and recommendations regarding stem cell research. Our ES cell research programs employ established ES cell lines approved by the National Institutes of Health or other cell lines established in accordance with good ethical practice. GE will not be associated with the primary harvest of human embryo-derived cells or tissues for its research.

In a rapidly evolving scientific field, our intention is for GE's position to accurately reflect the most recent government and public opinions, therefore, from time to time, we will update this statement to reflect such changes.

UPDATED MARCH 2021

GE develops and provides technology that enables pharmaceutical companies, clinicians, and academic researchers to develop new therapies, and diagnostics.

GE's tools and technologies are helping customers make these new therapies affordable and part of mainstream clinical practice.



www.gefoundation.com



gefoundation@ge.com

