



GE TRANSPORTATION | EVOLUTION SERIES LOCOMOTIVES

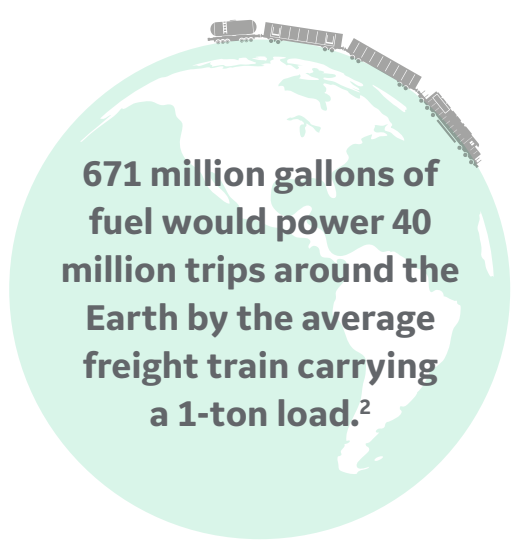
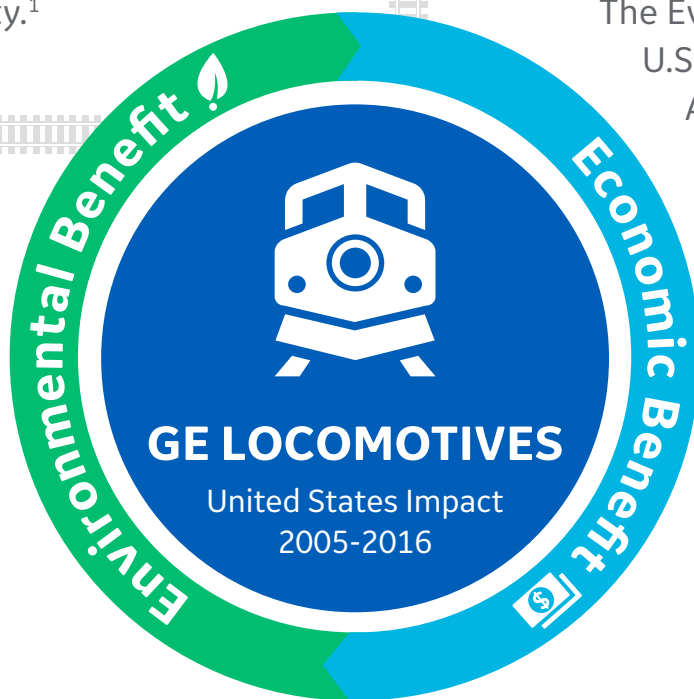
The most technologically advanced, diesel-electric, heavy-haul locomotive in the world

THE CHALLENGE

4.1 million metric tonnes of CO₂ are emitted annually by locomotives moving freight on U.S. railways. Reducing emissions is critical to sustainability.¹

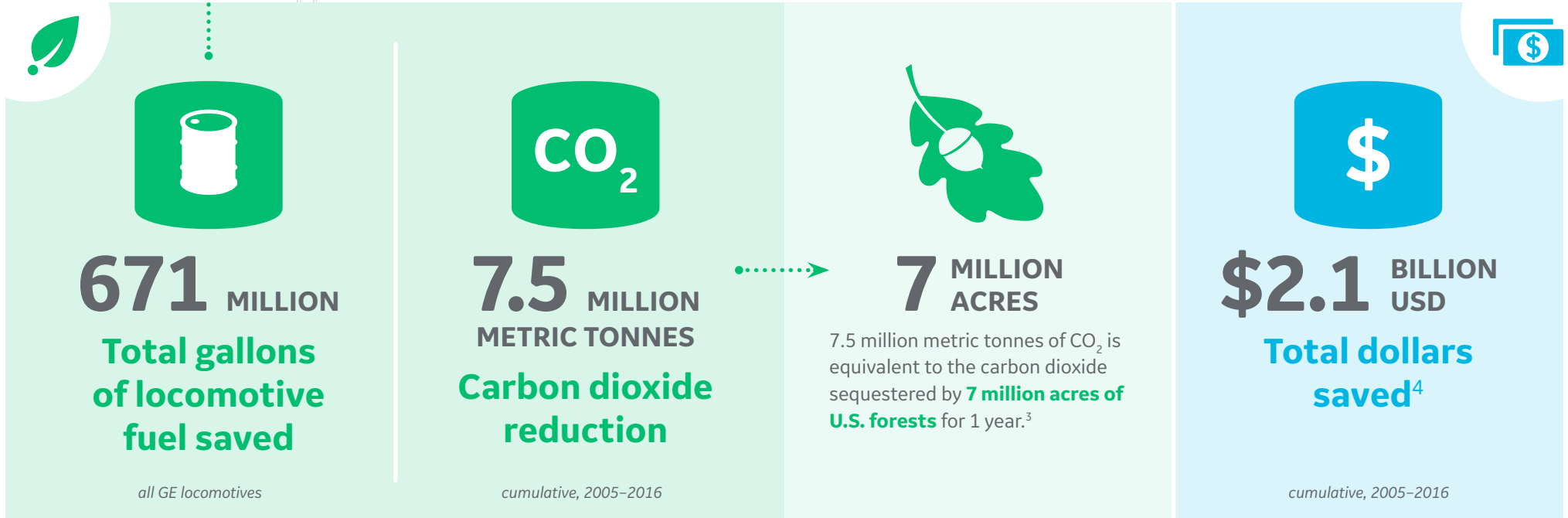
GE SOLUTION

GE's Evolution Series Locomotives conserve fuel and reduce the environmental impact of railroads. The Evolution Series meets the U.S. Environmental Protection Agency's (EPA) stringent Tier 4 emission standards.



THE IMPACT

The 5,958 GE Evolution Series Locomotives in service today have **saved on fuel costs**, while **lowering emissions**.



1. United States Environmental Production Agency (EPA), Inventory of U.S. Greenhouse Gas Emissions and Sinks: 1990-2015 (April 2017) 2. Source: <https://www.aar.org/newsandevents/Press-Releases/Pages/The-Nations-Freight-Railroads-Average-476-Ton-Miles-Per-Gallon.aspx> 3. Source: <https://www.epa.gov/energy/greenhouse-gas-equivalencies-calculator> 4. Calculations based on United States Energy Information Administration (EIA) average annual diesel price history.