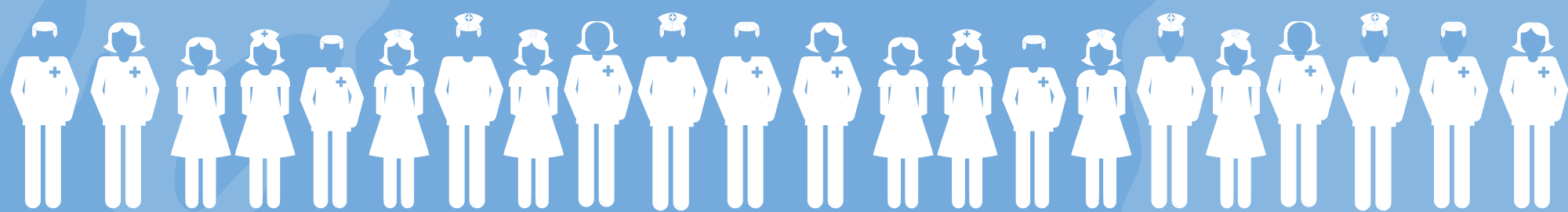


# GE HEALTHCARE: IMPROVING HEALTHCARE FROM WITHIN

INVESTING

**\$1 billion** in healthcare training and education solutions over the next 5 years

2015 2016 2017 2018 2019 2020



Enhanced training for

**2+ million**

physicians, radiologists, technologists, midwives, nurses, biomedical engineers and more by 2020



The workforce of Ireland is roughly equivalent to 2 million people



**300+ million**

patients impacted globally by 2020



The US population is approximately 300 million or **4.3 percent** of the world population.

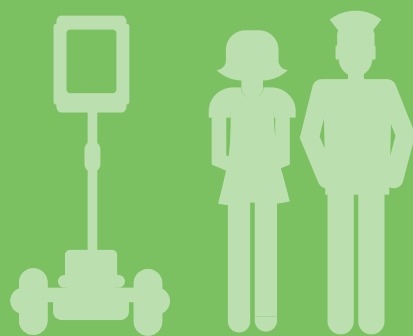


If all those people stood fingertip to fingertip, they could circle the globe **1.2 times**.

## TRAINING METHODS



on the ground



mobile telepresence<sup>1</sup>



online

## BUILDING ON PAST SUCCESS

**100,000**

healthcare professionals trained and educated over the next

**5 YEARS**

through Skills India Initiative

**200+**

biomedical equipment technicians trained in

**5 COUNTRIES**

through GE Foundation's Developing Health Globally initiative



GE Healthcare

[invent.ge/training2020](http://invent.ge/training2020)

1 – This solution not commercially available yet