

GE's 2030 Carbon Neutral Goal

GE is strengthening its commitment to sustainability by setting a goal of achieving carbon neutrality for its facilities and operations by 2030.*

For the decade ahead, GE is targeting the majority of its progress toward the 2030 goal with absolute reductions of direct emissions and energy use achieved through:



Operational investments

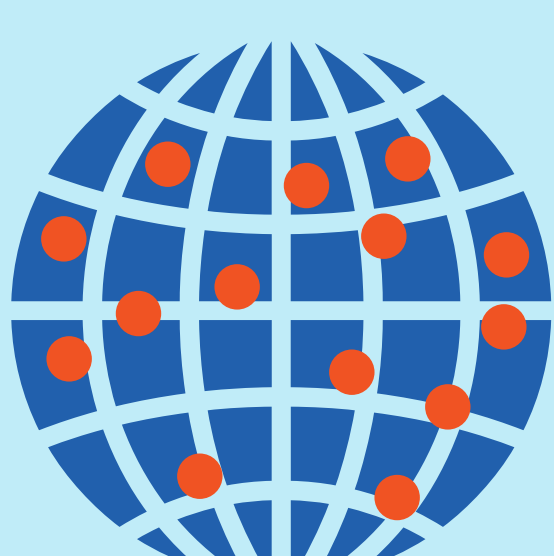


Smart power sourcing



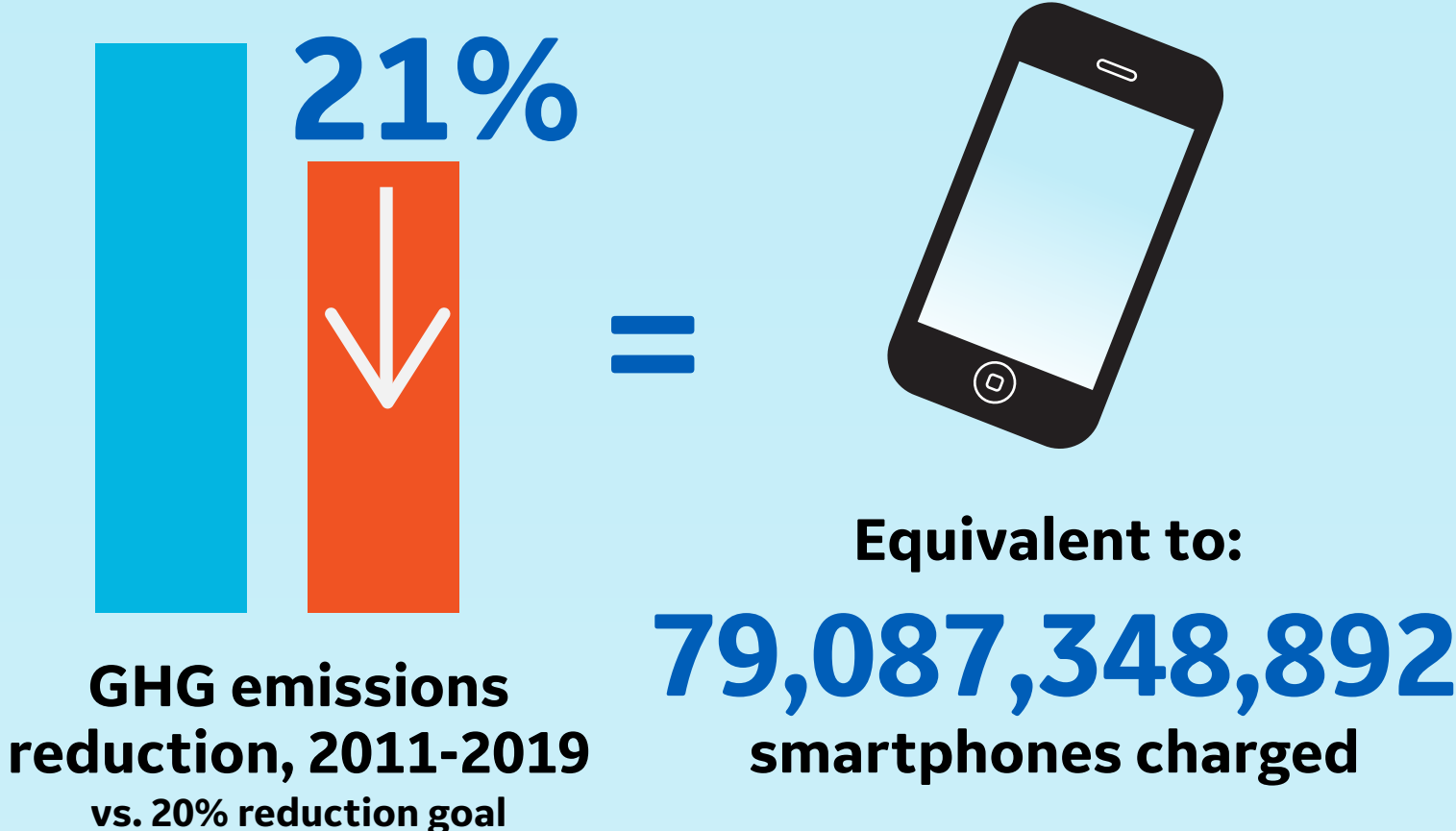
Eliminating energy waste

GE's industrial manufacturing footprint



1,000+
facilities worldwide
including factories, test sites,
warehouses and offices

GE exceeded its greenhouse gas reduction goal for 2020



“These investments and improvements are good for the bottom line and for the world, and employees across GE are energized and proud to help with this type of problem solving.”

- Larry Culp, GE chairman and CEO

We are also continuing to invest in our technology and products, which will help customers meet their decarbonization goals.

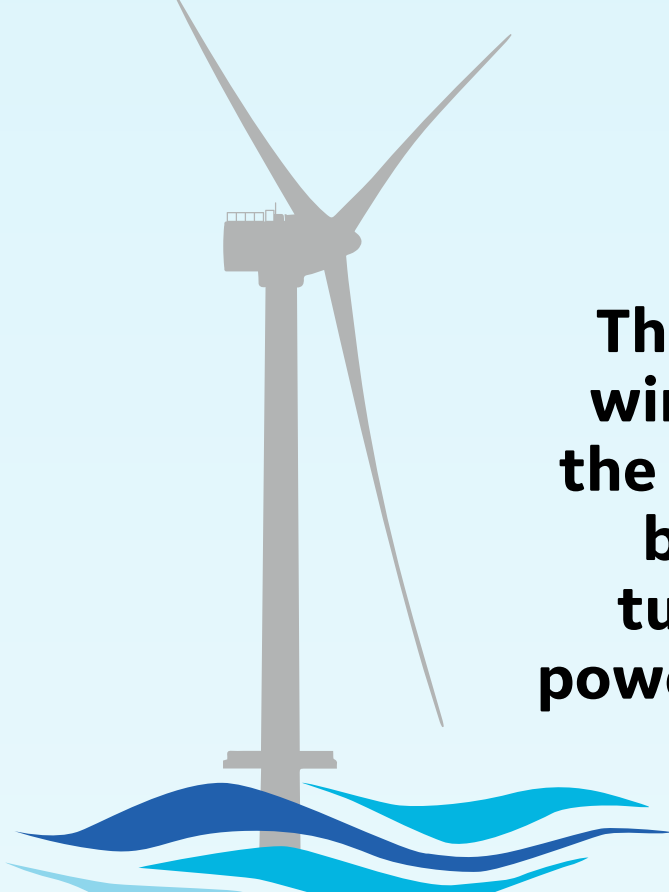
Onshore wind turbines

GE's two-megawatt onshore wind platform is approaching 20 gigawatts of installed base globally, which is enough to power 6 million U.S. homes.



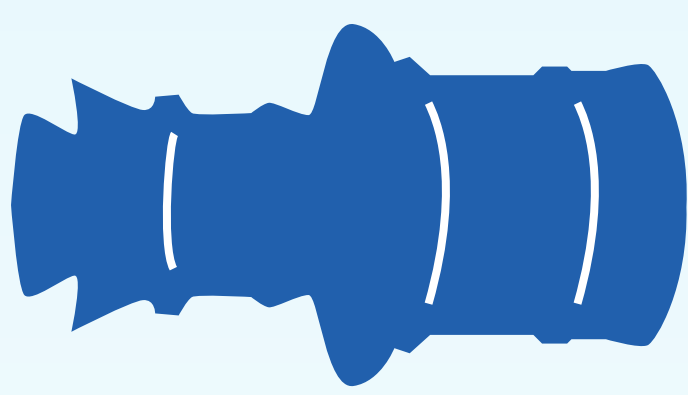
Haliade-X offshore wind turbines

The world's largest offshore wind farm at Dogger Bank in the North Sea will be powered by GE's Haliade-X 13 MW turbines, the world's most powerful offshore wind turbine.



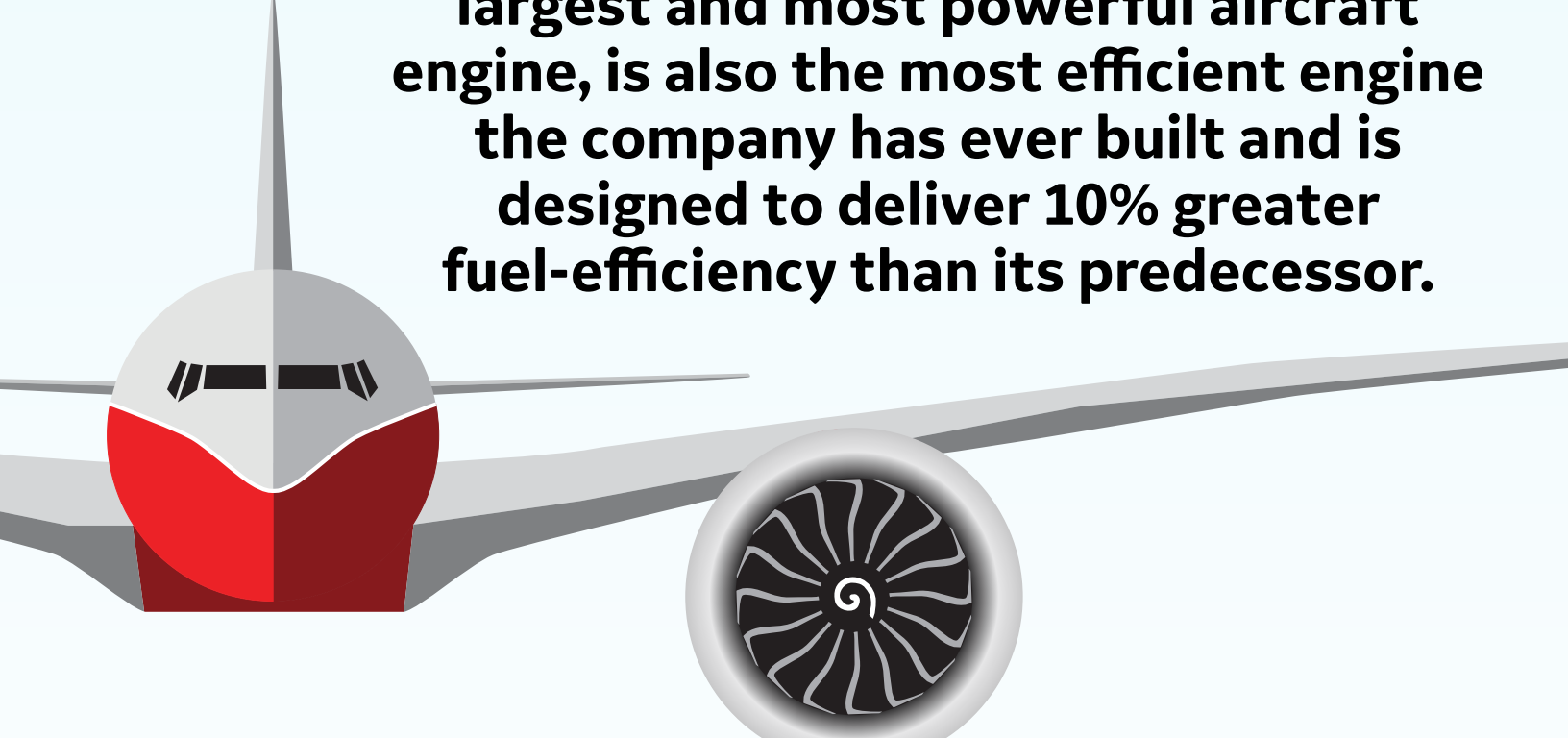
HA gas turbine

GE's world record-setting HA turbines are the most efficient gas turbine and are engineered to complement variable renewables with their industry-leading flexibility.



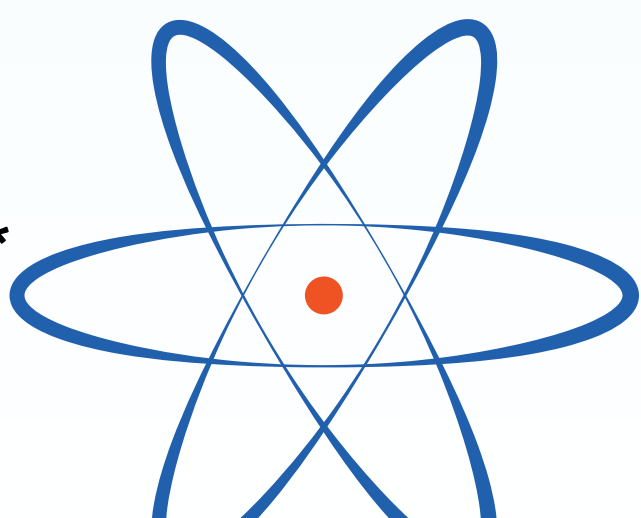
GE9X engine

The GE9X aircraft engine, the world's largest and most powerful aircraft engine, is also the most efficient engine the company has ever built and is designed to deliver 10% greater fuel-efficiency than its predecessor.



Nuclear power

GE Hitachi is working with partners and customers to develop advanced nuclear technologies like Sodium^{TM**} and BWRX-300 that will be able to provide carbon-free, dependable base load and flexible capacity.



*Scope 1+2 emissions. **Jointly developed with TerraPower.