



Tracker 9.5 from GE Digital

Increase throughput and accelerate time-to-market at global scale for automotive manufacturers

Order Execution Management to manage your manufacturing process and production orders

Automotive manufacturers are challenged with higher demands in extremely competitive environments, which can lead to unplanned downtime and increased costs. [Tracker from GE Digital](#) with Order Execution Management is a comprehensive tracking and order execution management system that helps automotive manufacturers raise productivity and cut costs by monitoring and managing the execution of production orders.

Outcomes

- Increase throughput with detailed, continuous information to help you make the best decisions
- Enable faster time-to-market with powerful order execution management capabilities
- Drive higher productivity and lower costs
- Leverage efficient scheduling and routing of materials
- Improve production performance with the ability to manage and adapt to real-time situations on a production floor
- Achieve Lean manufacturing and build right the first time

01 Increase throughput

With Tracker, each serialized item that moves through your production or packaging process can be tracked. You get the detailed, continuous information you need to optimize your manufacturing process while managing inventory levels and locations, scheduling resources and routing materials much more effectively.

02 Implement Lean production

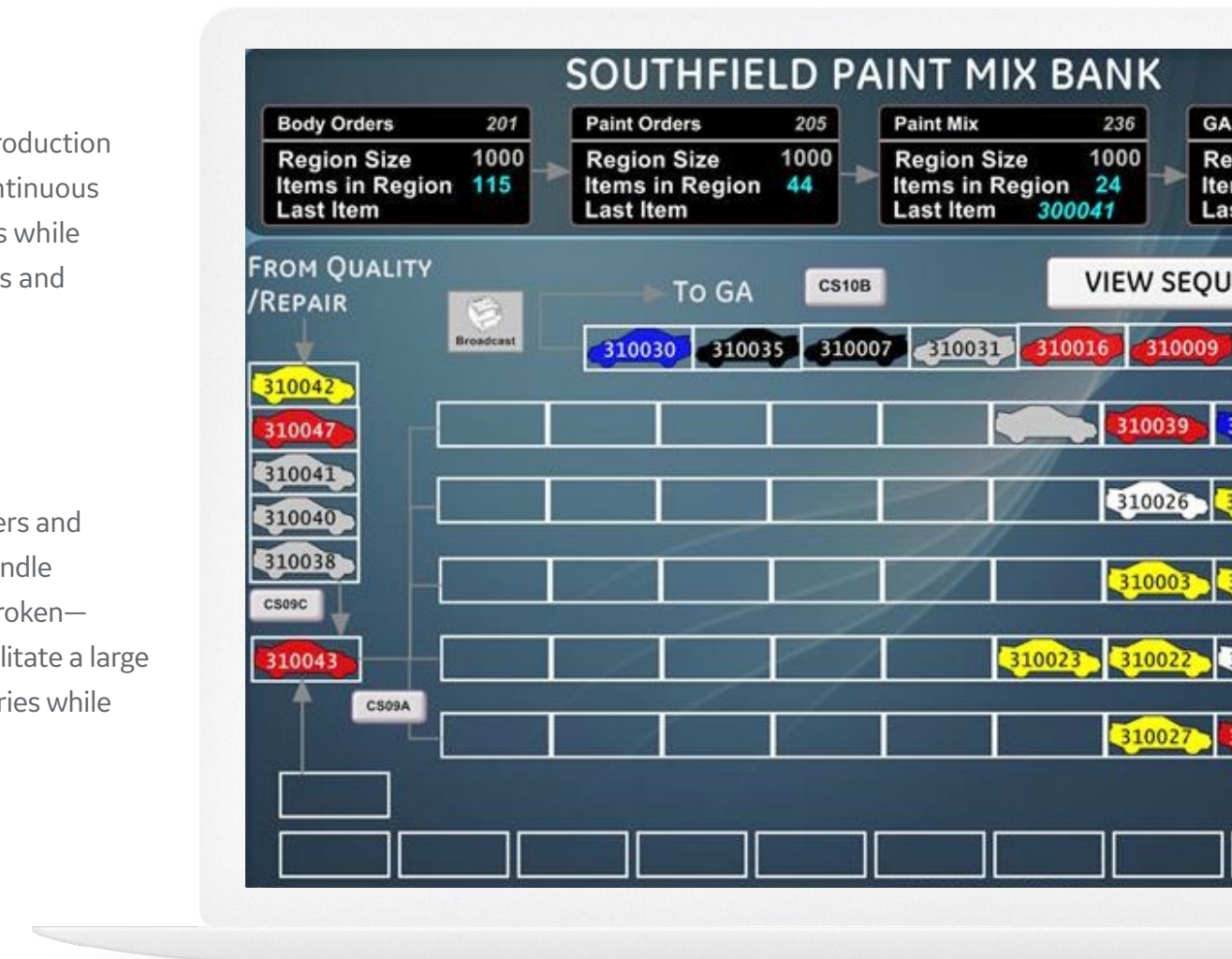
With Order Execution Management, Tracker helps manufacturers and suppliers understand real-time sequence requirements and handle situations that occur on the plant floor when the sequence is broken—enabling manufacturers to build right the first time. It helps facilitate a large reduction in WIP inventories along with finished goods inventories while meeting production targets.

03 Improve Inventory, production orders

Better manage inventory, production orders and routing materials with detailed data using Tracker. It empowers your operators with real-time information and control of their operations to accommodate a variety of production flow adjustments.

04 Real-time flow management of jobs

Tracker provides the ability to not only track the real-time location of jobs on the production floor, but can be configured to perform routing logic on the movement of jobs throughout the facility. This unique capability allows manufacturers to manage the manufacturing, routing and delivery of multiple product components into complex product assemblies.



Tracker accommodates a variety of production flow adjustments.

Reduced Integration Costs

Using Tracker, a global automotive company achieved 80% reduction in project integration costs to accelerate production capacity in North America.





Tracker 9.5 from GE Digital

Increase throughput and accelerate time-to-market at global scale for automotive manufacturers

Features

- Collects data from many automated sensors and readers, including bar codes, RF tags and mechanical tag systems
- Provides graphic screens to display tracking paths and item information, and reflects production control commands
- Maintains detailed data for all jobs in the system, including content, status, location, and production process counts
- Keeps cycle counts, repair information, and carrier/container status online; it accommodates different types of carriers and containers within a system, allowing you to track products even when the manufacturing process transforms them
- Provides routing control of production orders through the production facility
- Collects and tracks product genealogy information

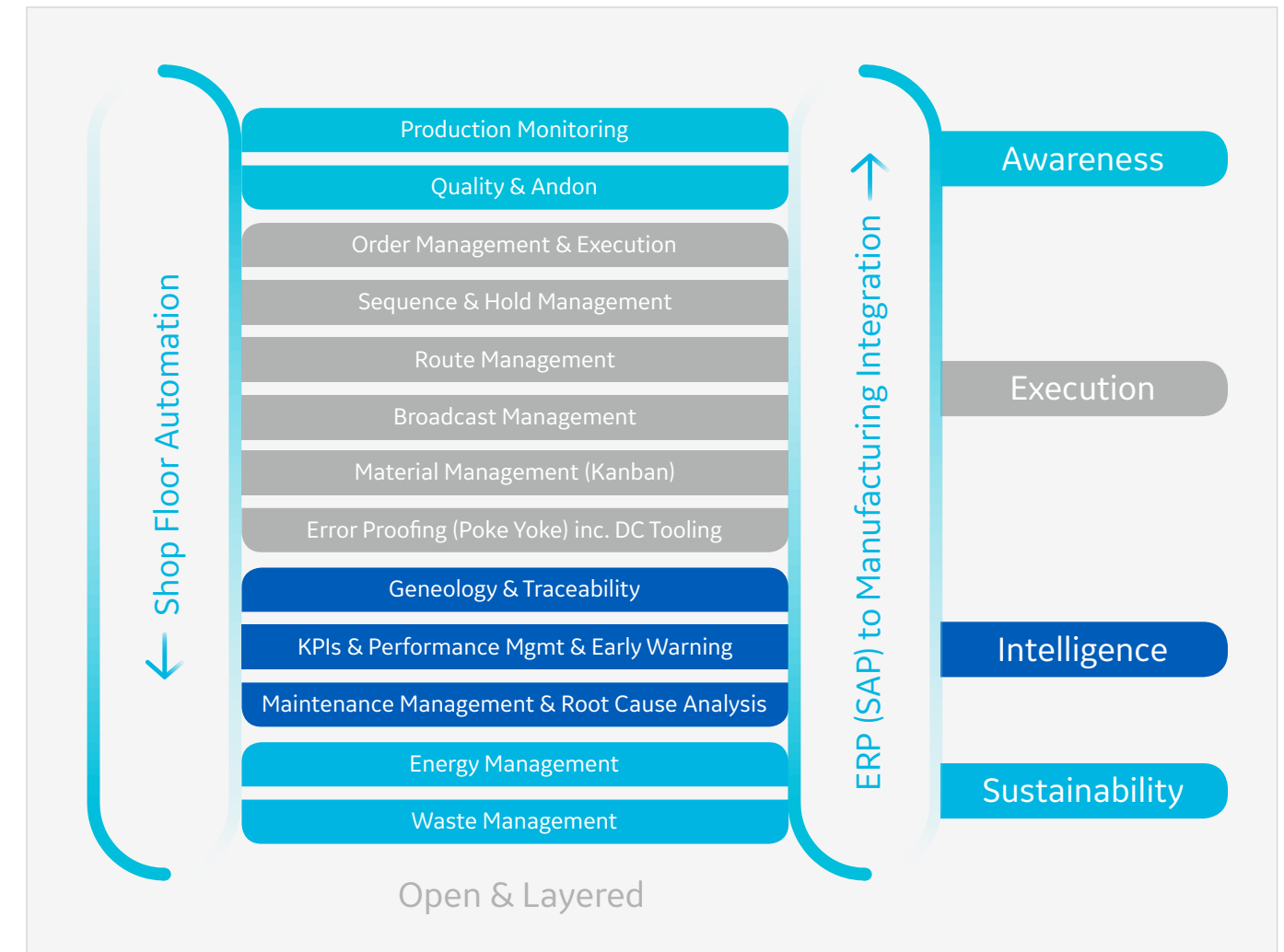
Hardware requirements

- Intel Core 2 Duo 3.0 GHz or better computer.
- A minimum of 4 GB RAM.
- A minimum of 40 GB of free hard drive space.

Software requirements

- One of the following operating systems:
 - Microsoft Windows 10
 - Microsoft Windows Server 2012 and R2
 - Microsoft Windows Server 2008 R2 SP1
 - Microsoft Windows 8 and 8.1
 - Microsoft Windows 7 SP1
- Supported: Microsoft SQL Server 2014, 2012 (11.x), 2008 R2; SQL Express 2014 and 2012; Microsoft Visual Studio 2012.4; Oracle 12C

Hardware and software requirements are representative and may vary by customer deployment. Please consult the product documentation for more details.



As a comprehensive tracking and order execution management system, Tracker supports a broad spectrum of critical production capabilities.

Find out how Tracker can help increase your throughput and accelerate your competitiveness.

LEARN MORE



Tracker 9.5 from GE Digital

Increase throughput and accelerate time-to-market at global scale for automotive manufacturers

Services

In the world of Industrial Internet of Things (IIoT), organizations are able to optimize productivity, reduce costs, and achieve Operational Excellence. While this is an exciting time for opportunity and growth, it can also bring on new challenges, questions, and uncertainty. No matter where you are on your IIoT journey, GE Digital has the right services offering for you.

[Advisory Services](#) We can help you plan and start your IIoT journey in a way that aligns to your specific business outcomes.

[Managed Services](#) We can help you maintain your critical machines from one of our remote locations around the world using model-based predictive-analytic technology.

[Implementation Services](#) Our team will help develop a collaborative, multi-generational plan that will marry your existing investments to the right process enhancements and technology.

[Education Services](#) We specialize in education services to ensure that you're leveraging our solutions to the fullest extent with our training and certificate programs.

[GlobalCare Support Services](#) Let us help by ensuring that your business continues to operate at its highest efficiency, all while mitigating risks to your investments.

[Cyber Security Services](#) Our solutions provide industrial-grade security for a wide range of OT network and application topologies.

Related products

GE Digital's [Brilliant Manufacturing](#) suite helps digitize your manufacturing plant or factory with insights that optimize your processes.



[CIMPLICITY](#) →

Drive real-time visibility for smart operators with true client-server-based visualization and control.



[Workflow](#) →

Guide operators with dynamic, interactive electronic work instructions and eSOPs for more consistent operations and optimized processes.

[Predix](#) →

Innovate and transform your business with the cloud-based operating system for the Industrial Internet, purpose-built for industry.

PREDIX

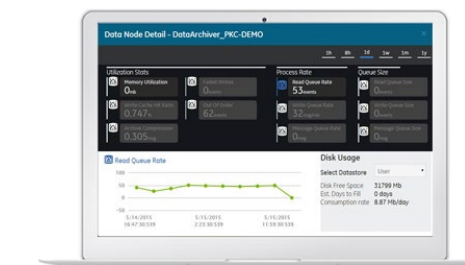
Continue your IIoT journey

Transforming your business requires innovative foundational solutions that lay the groundwork for optimized performance.



[Cyber Securityfor OT](#) →

Take the right actions to increase resilience, help ensure safety, and maintain availability across your operational technology (OT) environment.



[Historian](#) →

Optimize asset and plant performance through time-series industrial data collection and aggregation, leveraging predix IIoT connectivity.



[Mobile](#) →

Take industrial automation to a new level, transforming operational data into actionable information, accessible anywhere, anytime.

About GE

GE (NYSE: GE) is the world's Digital Industrial Company, transforming industry with software-defined machines and solutions that are connected, responsive and predictive. GE is organized around a global exchange of knowledge, the "GE Store," through which each business shares and accesses the same technology, markets, structure and intellect. Each invention further fuels innovation and application across our industrial sectors. With people, services, technology and scale, GE delivers better outcomes for customers by speaking the language of industry.

©2017 General Electric. All rights reserved. *Trademark of General Electric. All other brands or names are property of their respective holders. Specifications are subject to change without notice. 05 2017

Contact

Americas: 1-855-YOUR1GE (1-855-968-7143)
gedigital@ge.com
www.ge.com/digital