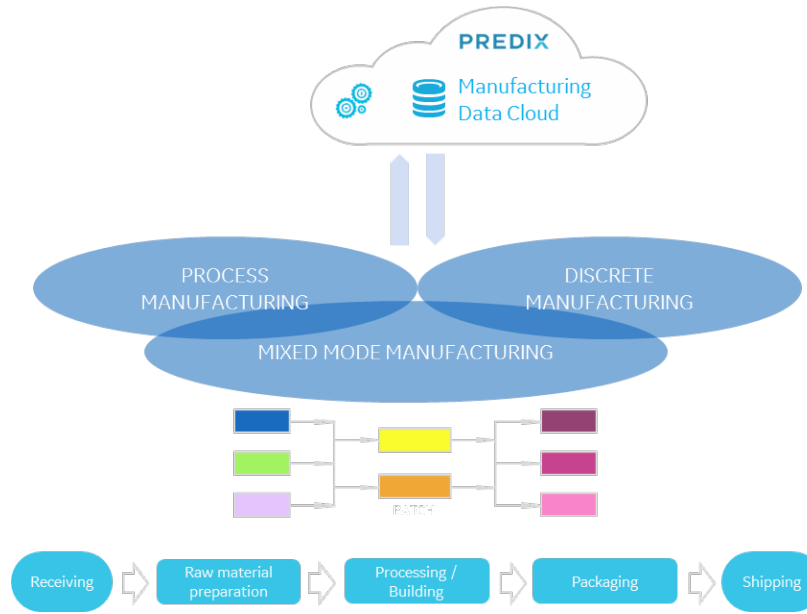


Proficy Plant Applications 8.2* (January 2021) – Unify Process & Discrete Operations

Plant Applications supports the Digital Worker with more “mobile first” UIs for Waste & Process Orders, discrete and hybrid “assembly” UI’s for use in various manufacturing environments

It is highly scalable with up to 300 active users



Proficy Plant Applications 8.1

More discrete capabilities to better serve our discrete customers

- Extended non-conformance capabilities – automatically split lots based on part disposition
 - New Receiving capabilities to facilitate inspection & sampling
- Enables more core process capability via the web
- New web displays drive more efficiency for shop floor employees
 - Take pictures of defects and annotate them
 - More...

Delivers more out-of-the-box ERP integration to support for faster customer deployment

New in Proficy Plant Applications 8.2

Enhanced Web User Experience – modern clients

- Process Order Management V2, unbound process orders, common History & BOM integration
- Web activities: SPC & eSignature
- New Genealogy UI
- Web BOM editor/management UI

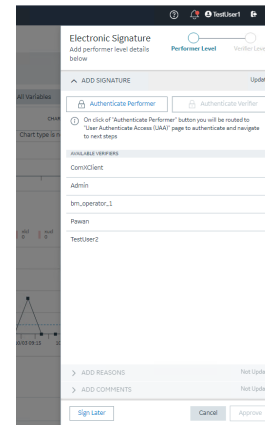
Install streamlined for less downtime

ERP connectivity - B2MML V3

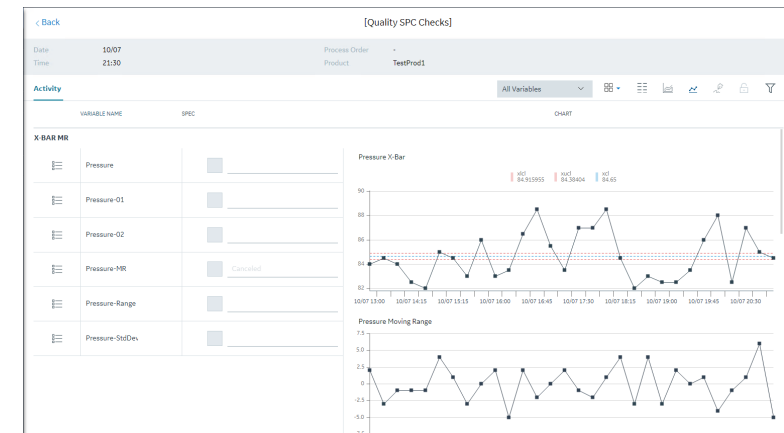
New Receiving Inspection Module

*** Safe Harbor Disclaimer** - The information presented is intended to be an outline of general product direction and it should not be relied on in making a purchasing decision. The information on the roadmap is for information purposes only and may not be incorporated into any contract and is not a commitment, promise or legal obligation to deliver any material, code, or functionality. The development, release, and timing of any features or functionality described for our products remains at our sole discretion.

This document contains GE proprietary information, and the recipient is not authorized to disclose such information to third parties



e-signature example



SPC example

