

# System 1\* Fleet Management



## A GE Predictivity\* Solution

### Introduction

Fleet Management increases accessibility, usability and adds new capabilities to the System 1 suite, and GE SmartSignal. System 1 is GE's patented condition monitoring software platform for real-time condition monitoring, and event diagnostics. GE SmartSignal predictive analytics software identifies impending equipment problems early across all process industries and helps avoid unexpected shutdowns and catastrophic failure.

Fleet Management is a web-based dashboard providing a single, secure access point for monitoring equipment and instrument health from the machine to fleet levels across industrial users. Through the application of analytics to instrument and software alarms it helps users quickly identify equipment and instrument health issues.

Fleet Management's connectivity to SmartSignal, enables additional advisories, and supporting evidence including time-based data, than through its connection to System 1 alone. Additional benefits include:

- Hosted and Premise options with Remote Monitoring and Diagnostic Centers to support GE-hosted versions
- Mobility native IOS app
- Additional User Preferences and customization options including screen options (list view/gauge view, alarm/event configurations)
- An Analysis Tab that adds the ability to view non-event driven data.

### Accessibility:

Fleet Management brings increased Accessibility to your Condition Monitoring Software with respect to both Cyber Secure Connectivity and Scalable Architecture.

### Usability:

Fleet Management was designed to be simple. It is easy to navigate using a simple hierarchy with the ability to move quickly to and from a Fleet, Site, Equipment Train or Machine.

GE Measurement & Control

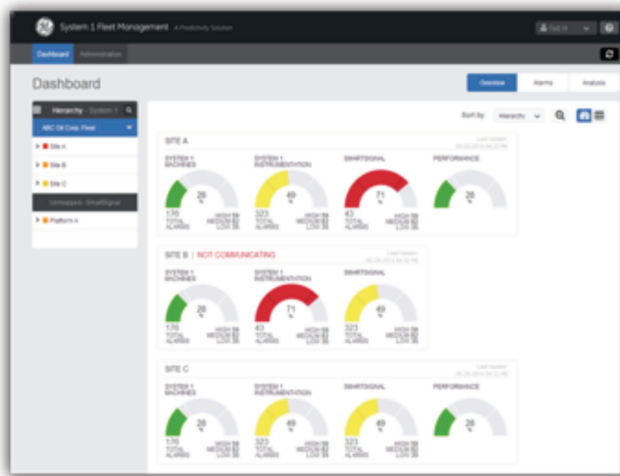
### About GE

GE (NYSE: GE) is the world's Digital Industrial Company, transforming industry with software-defined machines and solutions that are connected, responsive and predictive. GE is organized around a global exchange of knowledge, the "GE Store," through which each business shares and accesses the same technology, markets, structure and intellect. Each invention further fuels innovation and application across our industrial sectors. With people, services, technology and scale, GE delivers better outcomes for customers by speaking the language of industry. [www.ge.com](http://www.ge.com)

Easily distinguishable gauges are used to determine Machine and Instrumentation health segmented by Protection and Condition Monitoring.

### Automation makes the setup a snap:

- System 1 and SmartSignal Machine and Instrument Hierarchy are automatically populated and undated.
- Alarm and event management is also automatically mapped and updated.



### Capability:

Fleet Management uses analytics to quickly identify areas where action is necessary.

In addition, the health of your equipment and instrumentation can be evaluated separately.

The combination of these two views provides an understanding of the health of your condition monitoring system to ensure you have the data you need to evaluate the health of your equipment.

### Adoption:

Make a commitment to successful condition monitoring. Let Fleet Management help you maximize the value of your System 1 and GE SmartSignal software suites.

### Contact information

Americas: 1-855-YOUR1GE (1-855-968-7143)  
[gedigital@ge.com](mailto:gedigital@ge.com)

[www.ge.com/digital](http://www.ge.com/digital)

©2015 General Electric. All rights reserved. \*Trademark of General Electric. All other brands or names are property of their respective holders. Specifications are subject to change without notice.