

Introduction

The next evolution of the industry-leading condition monitoring software is here! As a result of more than 12 years of customer feedback, we've decided to completely reengineer System 1 to deliver a more simplified user interaction, built-in expertise, and modular architecture. This release, System 1 for Portables, allows for the deployment of a hand-held vibration analysis solution.

Interoperability

Both the SCOUT100 and SCOUT140 portable data collection instruments are natively supported in System 1. With this solution, System 1 provides a comprehensive data analysis toolset to enable condition based maintenance programs.



Alarm/Event Management

System 1 provides detailed information on each alarm, so you can detect changes in your equipment's health and interrogate the related data for further evaluation. System 1's reporting feature then allows you to document each event with solid data, evaluations, and recommendations.

Once you've interpreted the information about potential machine problems, you are able to proactively prevent costly, unplanned downtime.

Improved User Interface

The next evolution of System 1 features a more intuitive user interface model that includes:

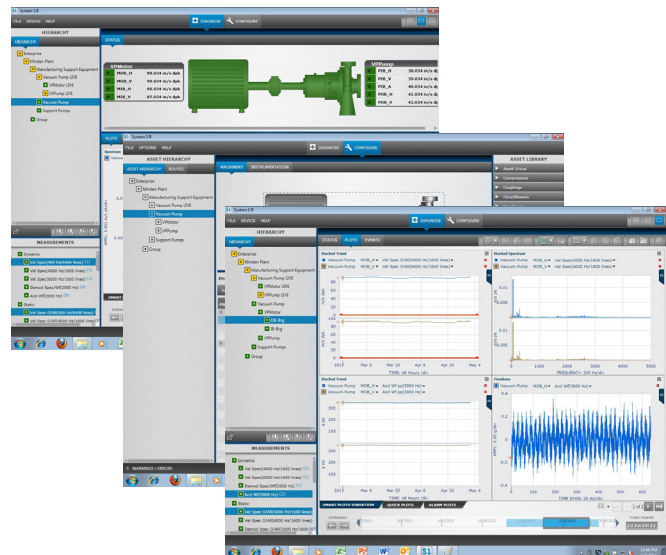
- Easy navigation
- Simpler displays

- Enhanced data
- All in one view of your machine train

The user interface is also entirely customizable, allowing you to create plots based on common configurations to quickly extract Actionable Information* from the data.

Features and Benefits

- Improved and simplified user interaction model
- Support for SCOUT100 and SCOUT140 instruments
- Fundamental vibration analysis tools for low to medium criticality assets with rolling element bearings
- Embedded instrumentation and alarming models with ISO Standards (14694/10816) and Technical Associates Proven method v4.0
- Alarm and events management
- New commercial model based on equipment type and criticality, including enterprise level packages



About GE

GE (NYSE: GE) is the world's Digital Industrial Company, transforming industry with software-defined machines and solutions that are connected, responsive and predictive. GE is organized around a global exchange of knowledge, the "GE Store," through which each business shares and accesses the same technology, markets, structure and intellect. Each invention further fuels innovation and application across our industrial sectors. With people, services, technology and scale, GE delivers better outcomes for customers by speaking the language of industry. www.ge.com



Contact information

Americas: 1-855-YOUR1GE (1-855-968-7143)
gedigital@ge.com

www.ge.com/digital

©2015 General Electric. All rights reserved. *Trademark of General Electric. All other brands or names are property of their respective holders. Specifications are subject to change without notice.