



# Plant Pulse Optimizer 1.0 from GE Digital

## Panoramic views of production performance for continuous improvement

### Drive lean improvements for discrete manufacturing

A fundamental principle of lean manufacturing is to measure current performance to institute continuous improvements in the process. The focus is around decreased cycle time, less inventory, increased productivity, and increased capital equipment utilization.

#### Outcomes

- Gain visibility for lean manufacturing improvements
- Leverage real-time decision support, product views, and information to the operation level
- Improve operational productivity by coordinating isolated activities
- Achieve better teamwork and operator performance by providing business line metrics, goal progression, and competitive position
- Enable rapid action on failures across product manufacturing
- Reduce overall costs and improve the ability to resolve operational problems and process improvements

[Plant Pulse Optimizer \(PPO\)](#) from GE Digital, part of our Brilliant Manufacturing suite, is a valuable operational intelligence solution for any Lean Six Sigma approach as it provides four key plant production measurements of manufacturing performance:

- Production goal achievement
- Work in Process (WIP)
- Production yield
- Production lead times

### 01 Broader visibility to all plant personnel

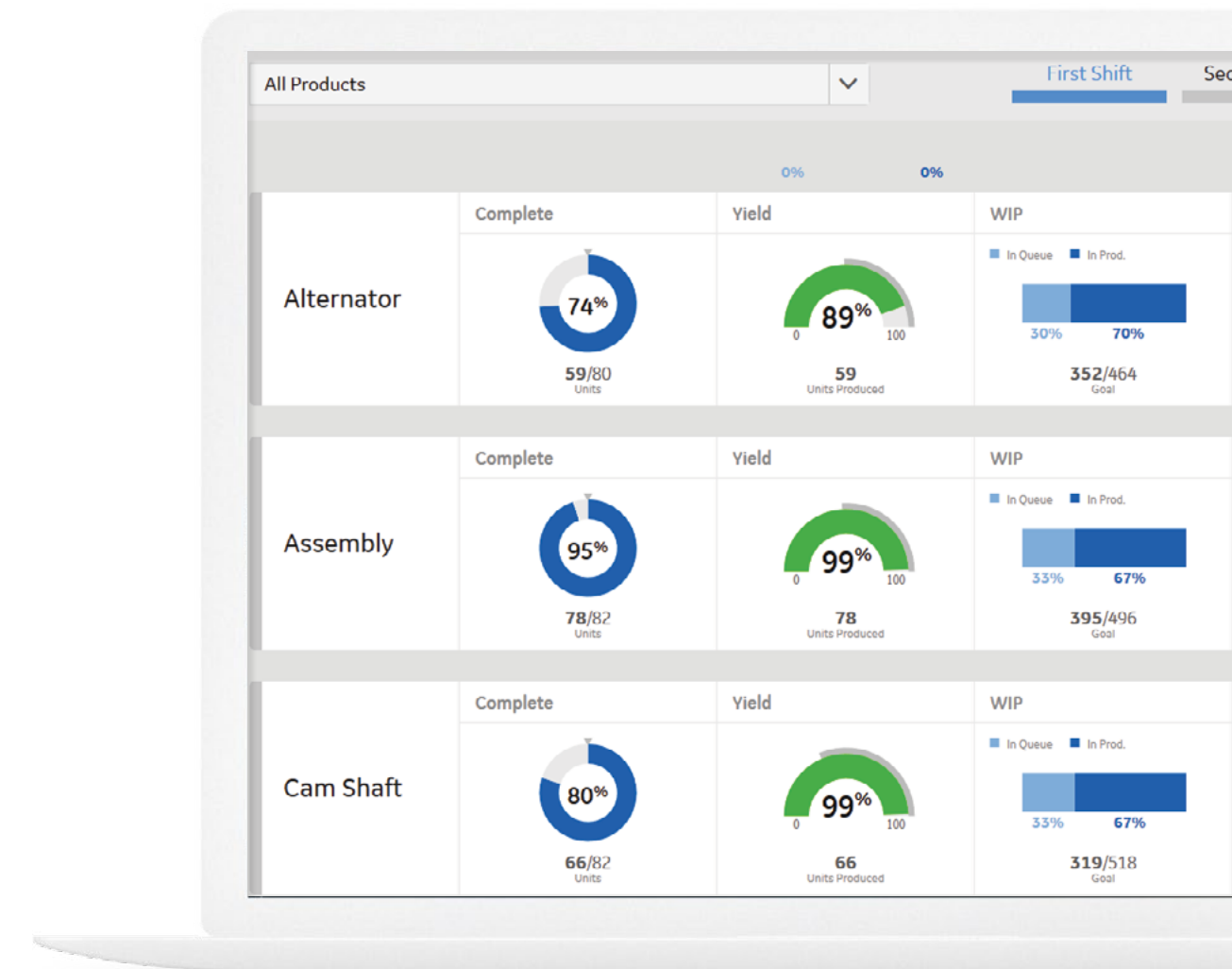
PPO provides a panoramic view of all production activity for all factory personnel via real-time, multi-shift based KPIs (machine-material-labor-product intelligence) as score cards.

### 02 Easy-to-view information

PPO makes the display of key performance and operational indicators easy and intuitive through the use of pre-developed KPI cards proven in GE's manufacturing plants and with input from manufacturing users just like you.

### 03 Standard KPI cards

Because the KPI cards are predefined, the same information can be shared across the organization to show the same measurements for comparison purposes. Common standards are instituted without the need for dedicated IT resources to configure and maintain dashboards.



Built for complex discrete applications, the PPO 1.0 score cards provide immediate value.

Manufacturing operations today are dealing with fragmented and untapped data, a lack of visibility across processes and outdated information that is prone to human errors. PPO provides a single, up-to-date view of your entire manufacturing process.





# Plant Pulse Optimizer 1.0 from GE Digital

## Panoramic views of production performance for continuous improvement

### Features

- Value-based card views, making it flexible to various user roles in various industries
- System agnostic—sources data from both GE and third-party systems and databases
- Simple and robust deployment
- Drill-down capability for in-depth analysis
- Responsive design layout enables rendering on common area TV screens to mobile devices
- Real-time visibility into siloed activities—know it as it happens
- Enables and provides real-time visualization of shop floor line KPIs for decision makers to measure manufacturing performance, predictability and take proactive action
- Improve performance, production yield, and quality by providing data transformed into insights and KPI analysis

### Hardware requirements

- 4 processors, 2.4GHz Intel Xeon or better
- 16GB Memory
- 50 concurrent network connections
- Network interface software for network communications TCP/IP network protocol

### Software requirements

- Windows Server 2012, R2 x64
- Apache Tomcat Server 8.0
- Java 1 8.0
- Google Chrome,v.51.0.2704.84

Hardware and software requirements are representative and may vary by customer deployment. Please consult the product documentation for more details.

Find out how Plant Pulse Optimizer can help you take the best actions with a panoramic view of your production performance.

LEARN MORE



Drill-down screens show details necessary for operators and supervisors.



# Plant Pulse Optimizer 1.0 from GE Digital

## Panoramic views of production performance for continuous improvement

### Services

In the world of Industrial Internet of Things (IIoT), organizations are able to optimize productivity, reduce costs, and achieve Operational Excellence. While this is an exciting time for opportunity and growth, it can also bring on new challenges, questions, and uncertainty. No matter where you are on your IIoT journey, GE Digital has the right services offering for you.

[Advisory Services](#) We can help you plan and start your IIoT journey in a way that aligns to your specific business outcomes.

[Managed Services](#) We can help you maintain your critical machines from one of our remote locations around the world using model-based predictive-analytic technology.

[Implementation Services](#) Our team will help develop a collaborative, multi-generational plan that will marry your existing investments to the right process enhancements and technology.

[Education Services](#) We specialize in education services to ensure that you're leveraging our solutions to the fullest extent with our training and certificate programs.

[GlobalCare Support Services](#) Let us help by ensuring that your business continues to operate at its highest efficiency, all while mitigating risks to your investments.

[Worldtech Security Services](#) Our solutions provide industrial-grade security for a wide range of OT network and application topologies.

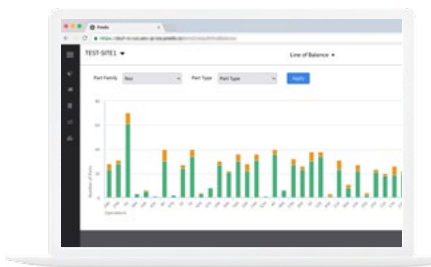
### Related products

GE Digital's [Brilliant Manufacturing](#) suite helps digitize your manufacturing plant or factory with insights that optimize your processes.



#### [Efficiency Analyzer](#) →

Get a single, up-to-date view of your entire production process.



#### [WIP Manager](#) →

Gain instant visibility of all work in process (WIP) for lean industrial manufacturing to help improve performance and operations.

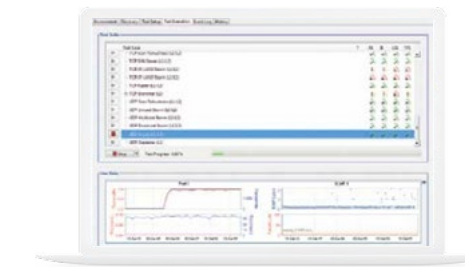
#### [Predix](#) →

Innovate and transform your business with the cloud-based operating system for the Industrial Internet, purpose-built for industry.

# PREDIX

### Continue your IIoT journey

Transforming your business requires innovative foundational solutions that lay the groundwork for optimized performance.



#### [Cyber Security for OT](#) →

Take the right actions to increase resilience, help ensure safety, and maintain availability across your operational technology (OT) environment.



#### [Historian](#) →

Optimize asset and plant performance through time-series industrial data collection and aggregation, leveraging Predix IIoT connectivity.



#### [HMI and SCADA](#) →

Precisely monitor, control, and visualize every aspect of your operations for intelligent control, enabling operators to make the best decisions faster.

#### About GE

GE (NYSE: GE) is the world's Digital Industrial Company, transforming industry with software-defined machines and solutions that are connected, responsive and predictive. GE is organized around a global exchange of knowledge, the "GE Store," through which each business shares and accesses the same technology, markets, structure and intellect. Each invention further fuels innovation and application across our industrial sectors. With people, services, technology and scale, GE delivers better outcomes for customers by speaking the language of industry.

©2016 General Electric. All rights reserved. \*Trademark of General Electric. All other brands or names are property of their respective holders. Specifications are subject to change without notice. 11 2016

#### Contact

Americas: 1-855-YOUR1GE (1-855-968-7143)  
gedigital@ge.com  
[www.ge.com/digital](http://www.ge.com/digital)