



Digital Energy

PhasorPoint Wide-Area Monitoring System (WAMS)

Integrated phasor solutions for advanced energy management of power systems

TRANSFORMING PHASOR DATA INTO ACTIONABLE INFORMATION

Fully scalable, easily integrated multi-client server solution for real-time Phasor Measurement Unit (PMU) data collection, management, analysis, visualisation and reporting

KEY OUTCOMES

- Early warning of dynamics problems that can be addressed in real-time through operational action
- Accelerated resynchronization in case of islanding, leading to decreased down-time
- Mitigate risk of major disturbances during dynamic conditions
- Observe system events not captured in system model or in slow-scan SCADA

KEY FEATURES

- Fully scalable and flexible. Grow to largest foreseeable system
- Wide range of applications from core to advanced features, complementing SCADA measurements
- Providing both real-time and historical data to manage system issues
- Coordinate with EMS to provide unified view of power system state, enhancing all aspects of power system management
- Proven product with over 20 years of successful deployments and operation

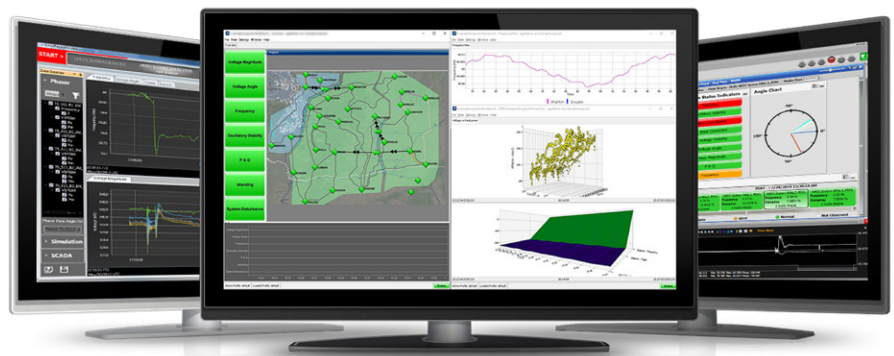
OVERVIEW

Measurement-based applications to manage dynamic power systems

Power utilities face a range of challenges in maintaining the stable operation of their power systems as the energy landscape changes. The drive to securely operate the system and avoid costly reinforcements requires more intelligent use of existing assets and advanced monitoring of system performance.

GE's PhasorPoint WAMS enables more effective use of the power system by providing enhanced visualisation and early warning of system issues. By delivering greater insight into power system dynamics, PhasorPoint can reduce operating costs through more effective use of power system capacity and ancillary services, while maintaining the high levels of system stability and security required by modern power systems.

PhasorPoint is a smart-grid ready suite of applications that can be fully integrated with EMS and Dynamic Security Assessment (DSA), improving power system performance and supporting a range of business functions across operations, asset management and planning & analysis. PhasorPoints intuitive user interface presents actionable information enabling system operators to take action earlier in system events, reducing the level of risk to system operation.



Contact Us

ge.com/digital/sales-contact-me