



OpShield for Healthcare from GE Digital

Visibility and security for connected healthcare environments

Seeing it is an important first step

Medical device connectivity, which parallels the Industrial Internet of Things (IIoT), is a huge new opportunity for safety and efficiency. To realize this value, clinical environments need to be networked in unprecedented ways.

As clinical environments become more interconnected, the risk of cyber incidents increases. Inadequately protected devices expose entire networks to attacks and disruptions that put safety, care quality, and reputation at risk.

GE Digital provides leading security solutions for networked clinical environments. Specifically, OpShield from GE Digital provides visibility and protection within clinical networks, minimizing the risk of malicious activity and other disruptions that can harm patients, harm equipment, and reduce efficiency.

Outcomes

- Reduces risk of cyber-related unplanned downtime, which can decrease safety and availability
- Improves asset protection from cyber-related damage
- Helps safeguard protected health information (PHI) by protecting networks from device compromise
- Reduces risk of damage to reputation and intellectual property theft due to cyber incidents
- Increases your confidence to connect and optimize your clinical assets

01 Inspect

To protect it, you need to see it. OpShield can see the devices and traffic on your clinical networks because it understands what IT firewalls can't: the protocols—or machine languages—medical devices use to communicate.

02 Solutions

Knowing something's wrong is useful, but having the ability to prevent it is better. That's why OpShield's enforcement policies not only alert, but can also be configured to block traffic that is not on a whitelist of allowable commands in the context of a particular data flow.

OpShield supplements its whitelist capability with unique vulnerability signatures. These heavily researched signatures help protect a device's root vulnerabilities vs. spotting known exploits one by one. The result is increased effectiveness and signature life.

03 Features

In addition to the ongoing inspection and enforcement OpShield provides, it helps protect clinical networks structurally, via virtual segmentation. Segmentation creates zones that reduce the mobility and damage of a misconfiguration or attacker.

From segmentation to protocol inspection and command blocking, OpShield provides several layers of the defense-in-depth approach necessary to help protect the people, assets and operations that run hospitals and other clinical facilities.



Vulnerability Research Team

Our vulnerability research team focuses solely on devices and software that control critical infrastructure. And whereas other research groups typically identify and track threats, we painstakingly reverse engineer exploits and conduct our own tests to identify the root causes—the weakness in the software or embedded device.

We then write signatures to block traffic that could exploit the vulnerability. This means longer life, more comprehensive protection from exploit variants, and protection against currently unknown exploits.



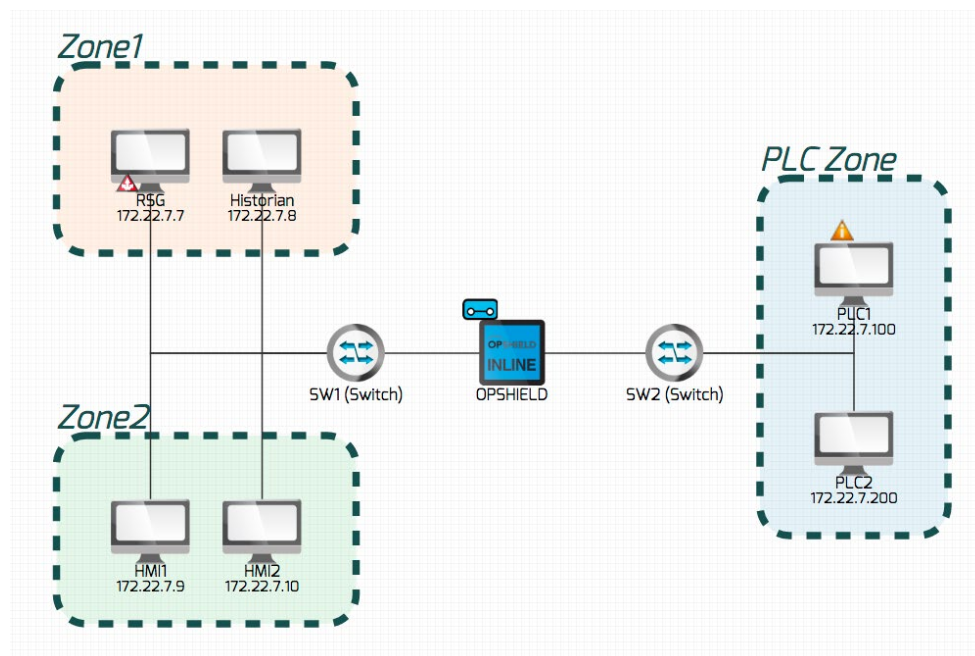
OpShield for Healthcare from GE Digital

Visibility and security for connected healthcare environments



Features

- Available with fiber optic support, network modules and SFP ports, and high availability features like hot-swappable dual power supplies
- OT network baselining to establish and review "normal"
- Intelligent policy creation uses machine learning to suggest policy based on baseline
- OT protocol inspection engine reads OT packets to the command and parameter levels
- Vulnerability signatures protect against root causes, not just one-off threats
- Drag-and-drop virtual network segmentation limits misconfiguration and attacker impact
- Security alerts can be delivered to the management console and SIEM tools
- Simplifies security administration with easy to use graphical interfaces—no CLI required
- Can deploy with minimal or no production disruption



Protocol Support: Industrial and Medical*

Protocol: Subprotocol	Protocol Whitelisting Capability
ALSPA E8000	1 interface, 10 commands, 8 parameters
ALSPA PCX	7 commands, 9 parameters
ALSPA PGD	27 commands, 5 parameters
ALSPA S8000	5 commands, 6 parameters
BACnet	16 interfaces, 310 commands, 3 parameters
DCE-RPC over UDP	11 commands
DCE-RPC over UDP: DCE-RPC over UDP Common	2 interfaces, 12 commands
DCE-RPC over UDP: ProfinetAcyclic	4 interfaces, 24 commands
DICOM	1 interface, 29 commands, 12 parameters
DNP3	34 commands, 17 parameters
EGD	20 commands
EGD Configuration (over HTTP)	8 commands, 1 parameter
IEC-104	2 interfaces, 58 commands, 3 parameters
Modbus	19 commands, 55 parameters
MS-RPC	20 commands
MS-RPC: DCOM	13 interfaces, 72 commands
MS-RPC: OPC Data Access	19 interfaces, 137 commands, 86 parameters
SDI (Mark VI)	2 interfaces, 91 commands, 1 parameter
SDI (Mark VIe)	201 commands, 2 parameters

*OpShield is fluent in these protocols to the command level. OpShield recognizes over 20 additional protocols, including Siemens S7, OPC UA and EtherNet/IP-CIP

OpShield for Healthcare from GE Digital



Visibility and security for connected healthcare environments

Product Specifications by Model

	OpShield-300-2	OpShield-300-4	OpShield-400-2-4S	OpShield-3000-8	OpShield-4000-4
AC Power					
Range Line Voltage				90 ~ 264 VAC	90 ~ 264 VAC
Normal Line Voltage				100 ~ 240 VAC	100 ~ 240 VAC
Max Current				1.2 A (100 VAC)	12.0A at -48 VDC
Frequency				50/60 Hz	50/60 Hz
Redundant Power				No	Hot Swappable AC PSU
DC Power					
Power Supply	12 ~ 36 VDC	12 ~ 36 VDC	12 ~ 36 VDC		
Power Consumption (Avg/ Max)	13.8 W / 15.7 W	13.8 W / 15.7 W	13.7 W/20.5 W		
Redundant Power	Dual DC Connectors	Dual DC Connectors	Dual DC Connectors	Optional Hot Swappable DC PSU	
Environmental					
Operating Temp	-40° ~ 70° C	-40° ~ 70° C	-40° ~ 75° C	0° ~ 40° C	0° ~ 45° C
Storage Temp	-40° ~ 85° C	-40° ~ 85° C	-40° ~ 85° C	-10° ~ -70° C	-25° ~ 75° C
Humidity	5% ~ 95% (non-condensing)	5% ~ 95% (non-condensing)	5% ~ 95% (non-condensing)	20% ~ 90% (non-condensing)	5% ~ 90% (non-condensing)
Cooling	Passive (Fanless)	Passive (Fanless)	Passive (Fanless)	Fan	Hot-swap fans
Physical					
Height	146 mm / 5.75 inches	146 mm / 5.75 inches	146 mm / 5.75 inches	44 mm / 1.73 inches	44 mm / 1.73 inches
Width	65 mm / 2.56 inches	65 mm / 2.56 inches	78 mm / 3.07 inches	438 mm / 17.24 inches	431 mm / 16.97 inches
Depth	127 mm / 5.00 inches	127 mm / 5.00 inches	127 mm / 5.00 inches	292 mm / 11.50 inches	514 mm / 20.20 inches
Weight	1.0 kg / 2.2 lbs	1.0 kg / 2.2 lbs	1.25 kg / 2.75 lbs	8.6 kg / 19 lbs	8.0 kg / 17.63 lbs
Mounting	DIN (or optional Wall-Mount)	DIN (or optional Wall-Mount)	DIN (or optional Wall-Mount)	1U rack	1U rack, rails included (tool-less)
Interfaces					
Network Modules					8x Gigabit SFP 4x Gigabit Copper
Gigabit Ethernet RJ45	2 with bypass + 1 mgmt port	4 with bypass + 1 mgmt port	2 with bypass + 1 mgmt port	8 with bypass + 2 mgmt ports	4 with bypass + 2 mgmt ports (add'l ports via network modules)
Gigabit Ethernet SFP			4	Supported via network module(s)	
USB	2	2	2	2	2
Console	Serial over DB9	Serial over DB9	Serial over DB9	Serial RJ45	Serial RJ45



OpShield for Healthcare from GE Digital

Visibility and security for connected healthcare environments



Product Certifications

	8 Port (3000, 4000)	2/4 Port (300, 400)
Safety		
	RoHS	RoHS
		IP30 (Ingress Protection)
		ATEX C1D2 (300 only)
UL		
	UL 60950-1, 2nd Edition, 2011-12-19	UL 60950-1, Information Technology Equipment Safety Part 1: General Requirements
	CSA C22.2 No. 60950-1-07, 2nd Edition, 2011-12	CSA C22.2 No. 60950-1-07, Information Technology Equipment Safety Part 1: General Requirements
FCC		
	FCC Part 15 Class A or B	FCC Part 15, Subpart B: 2012 Class A
	IC ICS-003	ICES-003 Issue 5: 2012 Class A
CE		
		IEC 60068-2-64 Vibration
		IEC 60068-2-27 Mechanical Shock
	EN-55022: 2010 + AC: 2011 (Class A or B)	EN 55022: 2010 + AC: 2011 Class A
	EN-61000-3-2: 2006 + A1: 2009 + A2: 2009	EN 61000-3-2: 2006 +A1: 2009 + A2: 2009 Class A
	EN-61000-3-3: 2008	EN 61000-3-3: 2008
	EN 55024: 2010	EN55024: 2010
	IEC 61000-4-2: 2008	IEC 61000-4-2: 2008
	IEC 61000-4-3: 2006 +A1: 2007 + A2: 2010	IEC 61000-4-3: 2006 + A1: 2007 + A2: 2010
	IEC 61000-4-4: 2012	IEC 61000-4-4: 2012
	IEC 61000-4-5: 2005	IEC 61000-4-5: 2005
	IEC 61000-4-6: 2008	IEC 61000-4-6: 2008
	IEC 61000-4-8: 2009	IEC 61000-4-8: 2009
	IEC 61000-4-11: 2004	IEC 61000-4-11: 2004
	IEC 61000-4-12: 2006	
	VCCI	VCCI



OpShield is now available with or without fiber, high availability features, and SFPs. Contact us to learn about the right technology for your operational environment.

[LEARN MORE](#)



OpShield for Healthcare from GE Digital

Visibility and security for connected healthcare environments

Services

In the world of Industrial Internet of Things (IIoT), organizations are able to optimize productivity, reduce costs, and achieve Operational Excellence. While this is an exciting time for opportunity and growth, it can also bring on new challenges, questions, and uncertainty. No matter where you are on your IIoT journey, GE Digital has the right services offering for you.

[Advisory Services](#) We can help you plan and start your IIoT journey in a way that aligns to your specific business outcomes.

[Managed Services](#) We can help you maintain your critical machines from one of our remote locations around the world using model-based predictive-analytic technology.

[Implementation Services](#) Our team will help develop a collaborative, multi-generational plan that will marry your existing investments to the right process enhancements and technology.

[Education Services](#) We specialize in education services to ensure that you're leveraging our solutions to the fullest extent with our training and certificate programs.

[GlobalCare Support Services](#) Let us help by ensuring that your business continues to operate at its highest efficiency, all while mitigating risks to your investments.

[Cyber Security Services](#) Our solutions provide industrial-grade security for a wide range of OT network and application topologies.

Related products

GE Digital's OT cyber security suite helps protect industrial and healthcare companies against misconfigured devices and unplanned downtime due to cyber incidents. We can help you test, certify, and secure industrial connected devices, applications, and processes.



[Achilles Test Platform](#) →

Build in product security. Achilles Test Platform discovers vulnerabilities and faults to be reproduced, isolated, identified, and resolved before product introduction.

[Predix](#) →

Innovate and transform your business with the cloud-based operating system for the Industrial Internet, purpose-built for industry.

PREDIX

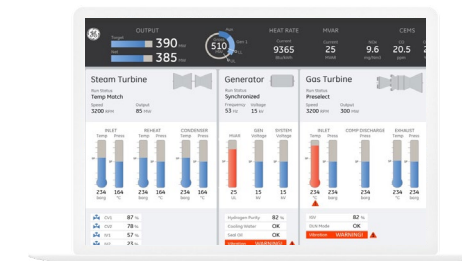
Continue your IIoT journey

Transforming your business requires innovative foundational solutions that lay the groundwork for optimized performance.



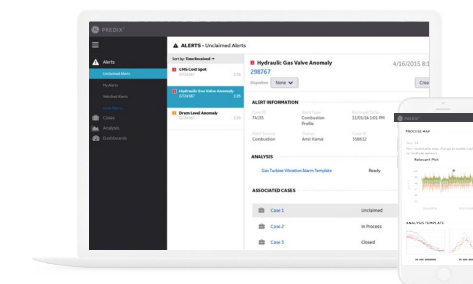
[Historian](#) →

Optimize asset and plant performance through time-series industrial data collection and aggregation, leveraging Predix IIoT connectivity.



[iFIX](#) →

Gain visibility into your operations and secure agility for smarter decision making that drives results.



[Asset Performance Management](#) →

Move from reactive to proactive maintenance to reduce unplanned downtime, minimize maintenance costs, improve efficiency and extend asset life.

About GE

GE (NYSE: GE) is the world's Digital Industrial Company, transforming industry with software-defined machines and solutions that are connected, responsive and predictive. GE is organized around a global exchange of knowledge, the "GE Store," through which each business shares and accesses the same technology, markets, structure and intellect. Each invention further fuels innovation and application across our industrial sectors. With people, services, technology and scale, GE delivers better outcomes for customers by speaking the language of industry.

Contact

Americas: 1-855-YOUR1GE (1-855-968-7143)
gedigital@ge.com
www.ge.com/digital