

Digital Transformation, how to start

# How to start the Digital Transformation journey in Food & Beverage Production

Mounia Papadopoulou

Presales Solution Architecture Leader, EMEA



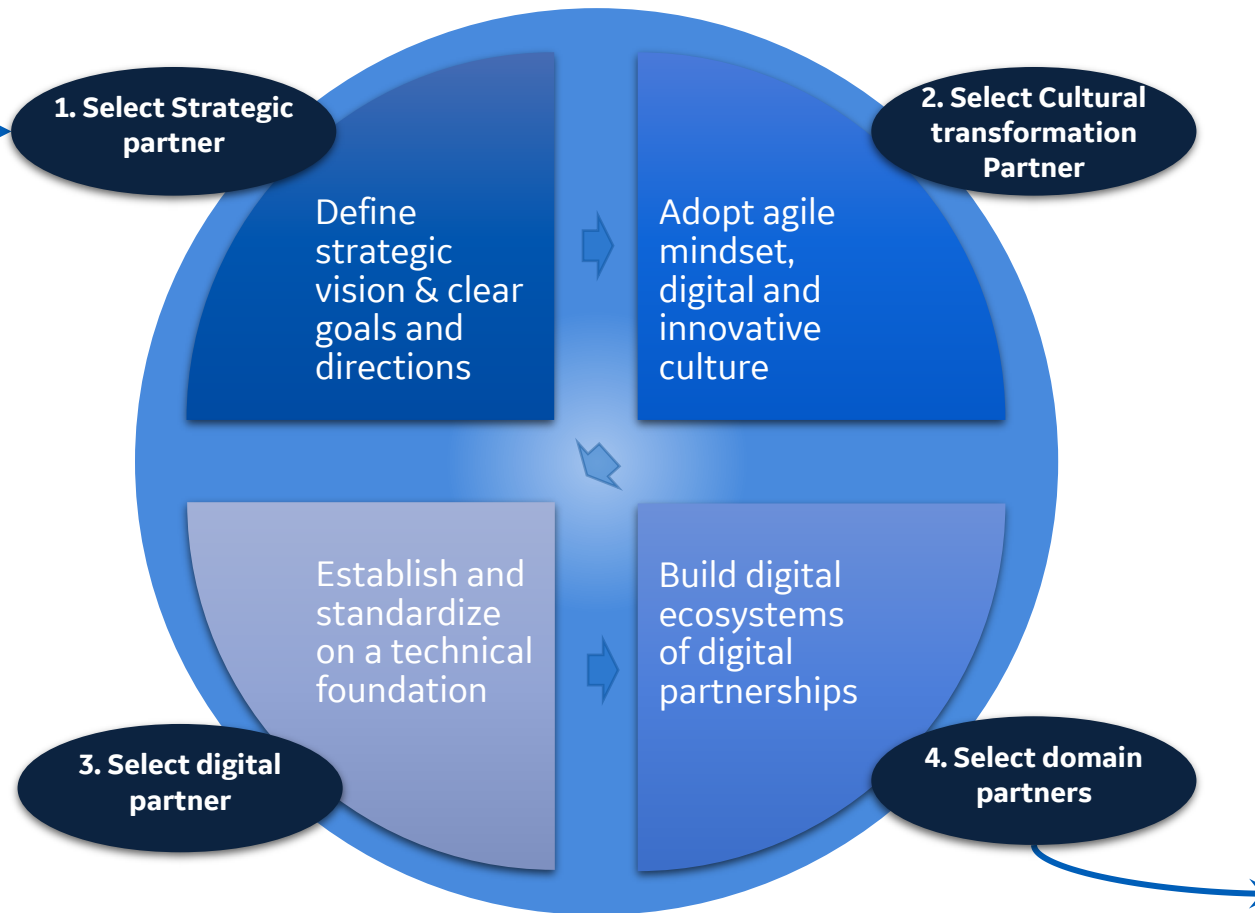
# The path to Digital Transformation- Think Big

- augment your own domain expertise with partnerships



## CURRENT SITUATION

- Reactive
- Lack of digital information
- Little innovation
- Little creativity
- Difficult to collaborate
- Continue improvements in silos



## ASPIRATION

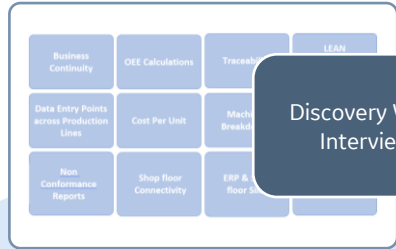
- Agile
- Creative
- Global collaboration
- Strong innovation
- Faster Time2Solution, T2Value and T2Market
- Vastly better CX
- Radically lower cost
- Higher revenue



# The GE Approach – Driving Shareholder Value



## Identify Areas for Improvement



Discovery Workshop, Interviews, etc.

## Vision & Aspiration

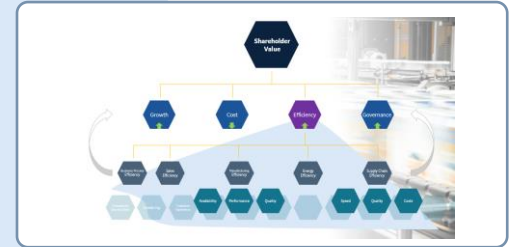


## Recommendations

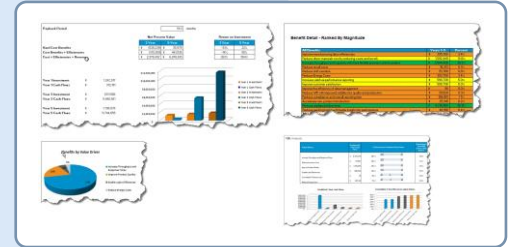
Area for Improvement	Solution
<ul style="list-style-type: none"> <li>Business Continuity Plans</li> <li>Shop Floor Connectivity</li> <li>Cost Per Unit</li> <li>Shop Floor Connectivity</li> <li>Business Continuity Plans</li> <li>Shop Floor Connectivity</li> <li>Business Continuity Plans</li> <li>Shop Floor Connectivity</li> <li>Non-Conformance Reports</li> <li>OEE Calculations</li> <li>Cost Per Unit</li> <li>Shop Floor Connectivity</li> <li>Shop Floor Connectivity</li> <li>ERP &amp; Shop Floor Sync</li> </ul>	<ul style="list-style-type: none"> <li>Historian</li> <li>SCADA</li> <li>MIS</li> </ul>

Areas for improvement Solution Impacts / Benefits

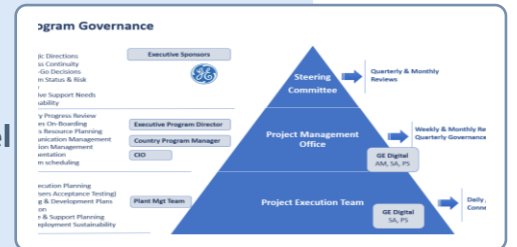
## Shareholder Value



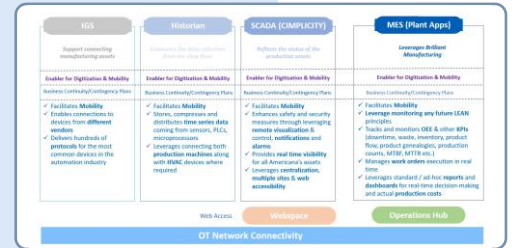
## Business Case & Projected ROI Calculation



## Governance Model



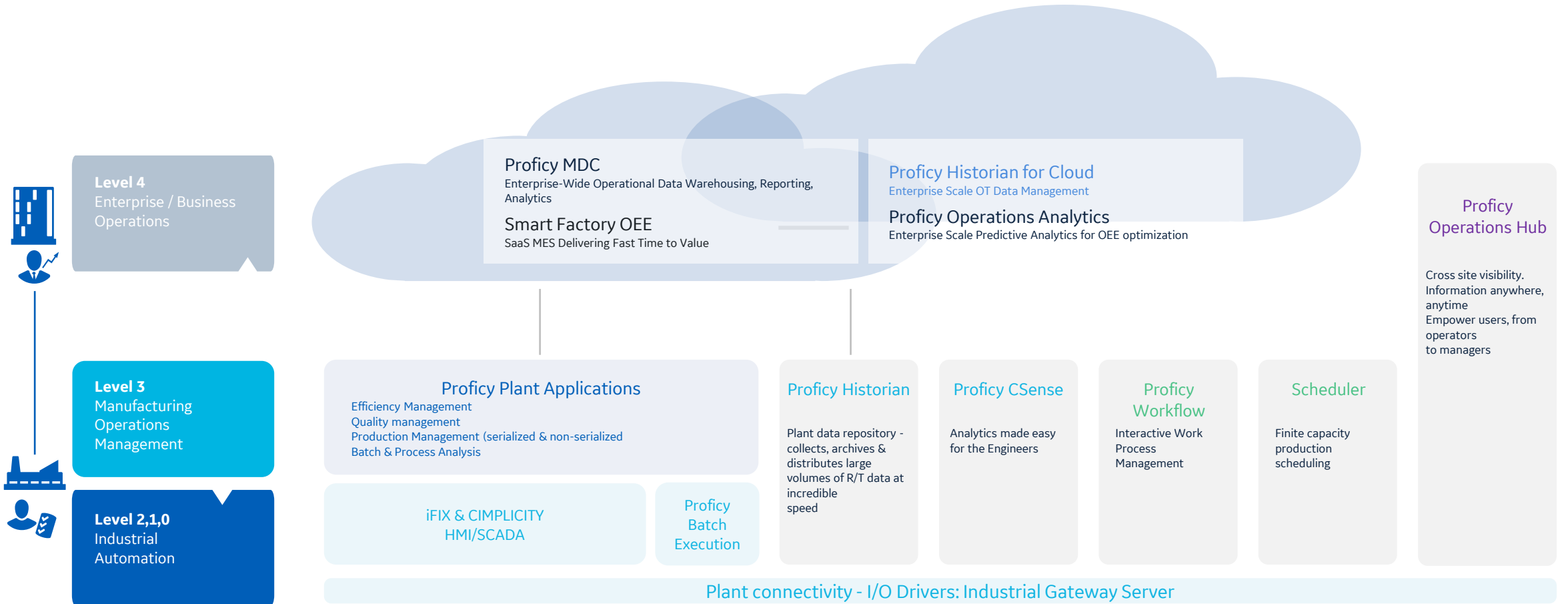
## Recommended Software Solutions & Architecture



Think big, start small, scale fast

# GE Digital's Proficy Portfolio

## From Plant floor to ERP





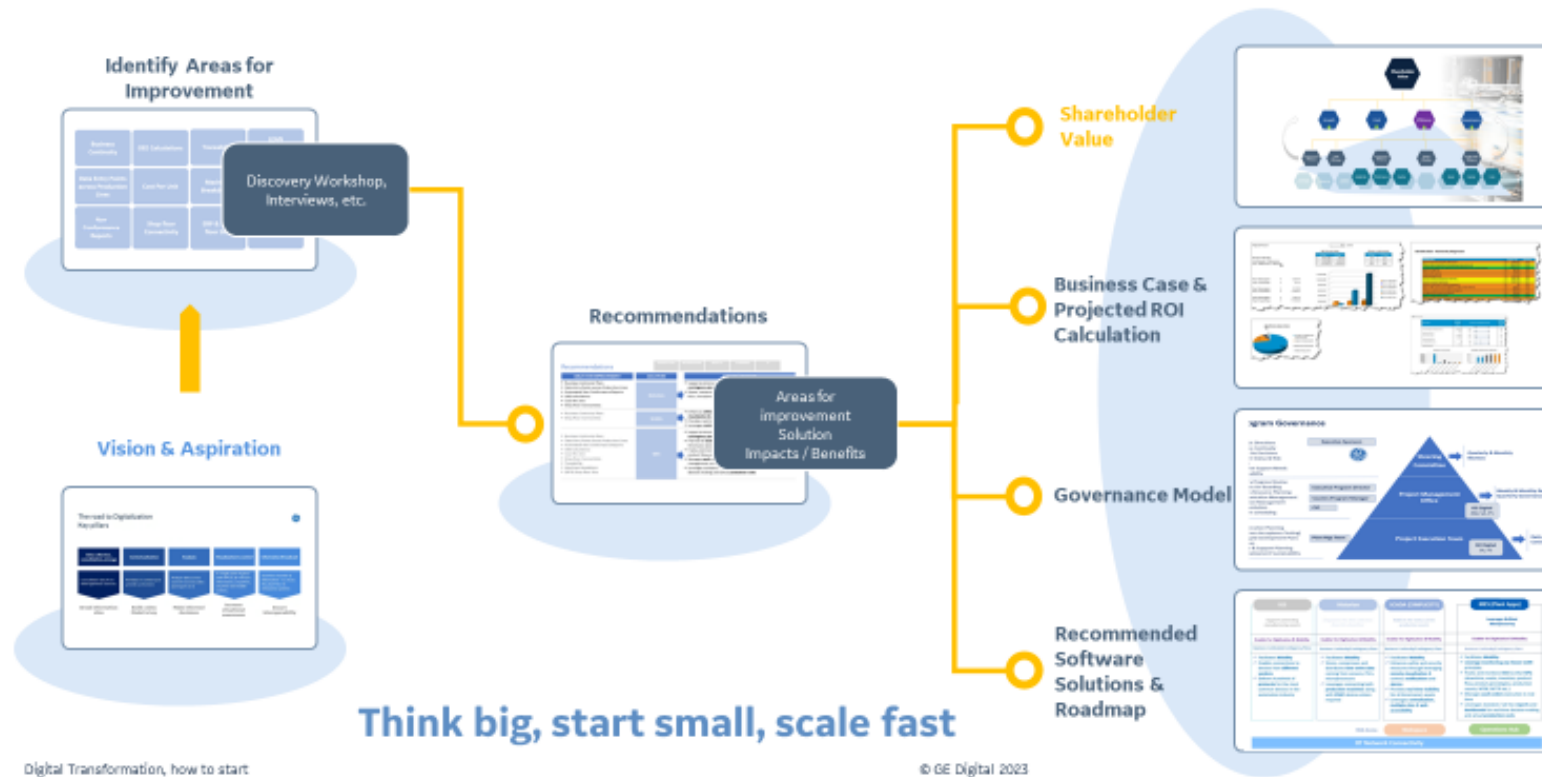
Digitization, how to start

# Announcement

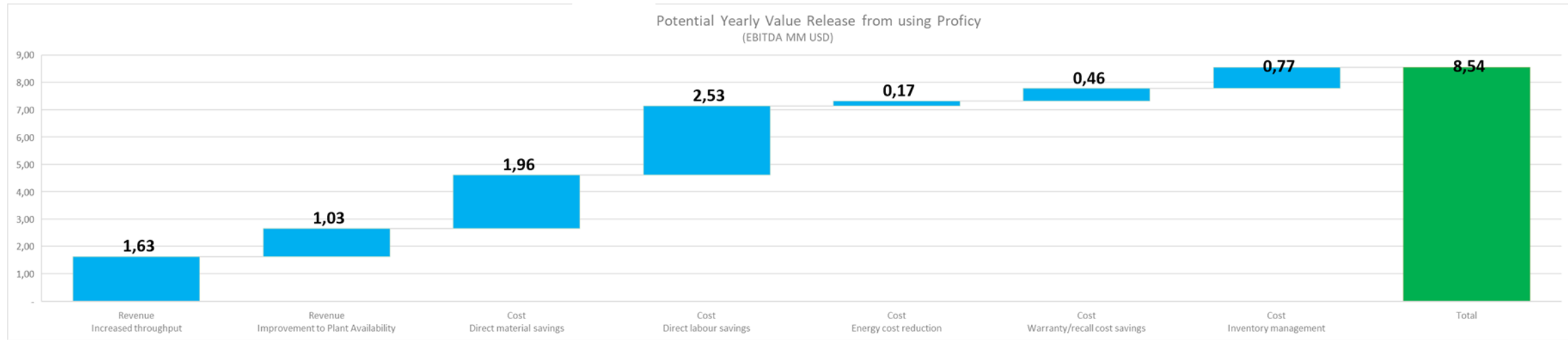
# As part of the DED partnership, GE is happy to announce our **promotion** offering for the **participants** of the workshop



## The GE Approach – Driving Shareholder Value



# Potential Yearly Value Release from using Proficy (EBITDA MM USD)



## Levers

Increased yield due to visibility

Reduced unplanned downtime

Increased scheduling capability

Increased throughput and capacity

Material consumption due to poor quality

Direct material savings from optimal raw material usage

Increased indirect labour efficiencies

Labour spent on poor quality

Increase manufacturing labour efficiencies

Energy cost savings from lower overheads

% reduction in warranty expense through better quality

Decreased raw material and WIP inventory and carrying cost



Building a world that works