



GE Change Management and GE CIMPLICITY

CIMPLICITY and GE Change Management together provide a powerful way to manage your GE HMI/SCADA applications and ensure you never experience lost files or the inability to recover from a disaster again.

- Have you ever wished you had an Undo button for your HMI/SCADA project?
- Do you need an audit trail for changes made to your system?
- Do you want to increase the security of your development environment?

If so, adding GE Change Management to your CIMPLICITY system is a natural choice.

GE Change Management provides the functionality to manage and maintain programs and projects in a manufacturing environment to improve plant uptime, enforce good engineering practice and reduce risk. Using version control, security, audit trailing, and scheduled verifications, you can get a handle on what's happening in your plant.

GE Change Management is designed to be an open and flexible interface with a variety of software and hardware products from various vendors including GE, Rockwell, Siemens, and Schneider, providing you with a complete automation change management solution.

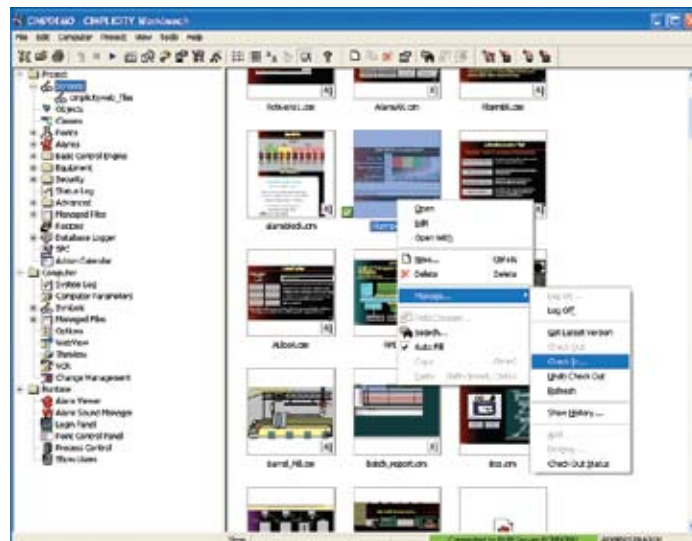
Manage Your CIMPLICITY Projects

GE Change Management ensures that all your nodes are using the most current version of a CIMPLICITY application and uses a

check out/check in process, whereby only one person can modify a screen, the point database or other files at a given time. The system maintains a version history, so if undesired changes are made, you can recover a previous version with the click of a button.

All this happens from your CIMPLICITY Workbench. The Workbench tree has been enhanced to provide a logical order of access to all components of your applications. Change Management is available at the project and component level to manage your point database, screens, configuration and more.

GE Change Management allows you to easily manage your projects in a multi-user development environment. Multiple users can access different parts of the same application during development, while ensuring people don't overwrite each other's work.



GE Change Management and GE CIMPLICITY

System Requirements

GE CIMPLICITY Version 7.0 or later

GE Change Management Server and Scheduler

Track changes and revisions

GE Change Management provides a version control system that maintains a history of changes at both the project and component level. As changes are made to components, and checked in, new versions are automatically created. This version history provides traceability, tracking who made changes and when, as well as the ability to revert back to previous versions if needed, ensuring that you can recover from inadvertent or incorrect changes quickly and easily.

The system maintains the concept of a master version on the server – the version of the files that should be running on the master node. Using the difference function, you can compare the node files to the master files and determine if there are any changes. You can also compare any two versions of the files to determine what changes were between them.

Details of differences are provided in a text format so you can see what has been added, modified, or deleted.

Detailed Audit Trails

The GE Change Management system records each time a project is accessed in a central audit trail. The system tracks which users are modifying what components within

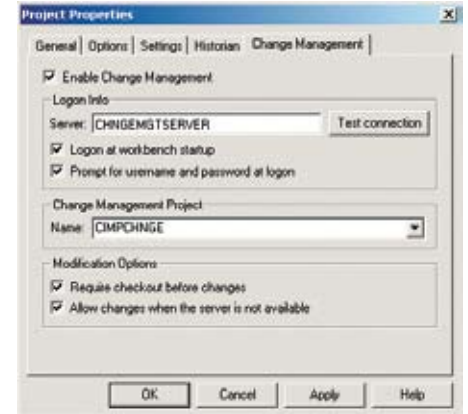


| Event Date | User | Computer Name | Component | Project | Event | Event Description |
|----------------------|---------------|---------------|-----------|----------|----------------------|--|
| 28-Sep-2006 01:26 PM | Administrator | PCMD8M0 | FX App | | Access Control Event | Access Control has been checked out. |
| 28-Sep-2006 01:26 PM | Administrator | PCMD8M0 | FX App | | Group/User Change | Assigned user Bob to group Administrators. |
| 28-Sep-2006 01:26 PM | Administrator | PCMD8M0 | FX App | | Access Control Event | Access Control has been checked in. |
| 28-Sep-2006 01:26 PM | Bob | PCMD8M0 | FX Mgr | | Logout | Bob logged out. |
| 28-Sep-2006 01:26 PM | Bob | PCMD8M0 | FX Mgr | | Login | Bob logged in. |
| 28-Sep-2006 01:26 PM | Bob | PCMD8M0 | FX Mgr | GEF_TEST | Project Check Out | Check out of [screens/scr1.cim] |
| 28-Sep-2006 01:26 PM | Bob | PCMD8M0 | FX Mgr | GEF_TEST | Project Check In | Check in of [screens/scr1.cim] |

your CIMPLICITY project. It records the date, time, user, computer location and project, along with any comments supplied by the user. This provides you with the ultimate in traceability on changes for your application.

Security

GE Change Management works with your CIMPLICITY security. Only those users with the appropriate permissions can access the files being managed by the GE Change Management system.



Scheduled Backup and Compare

The GE Change Management scheduler allows you to confirm that the CIMPLICITY application running on a node matches the master version on the server on a scheduled basis, ensuring that unauthorized changes are detected. With a backup of your running systems, you can recover from errors or system failures quickly and easily.

About GE

GE (NYSE: GE) is the world's Digital Industrial Company, transforming industry with software-defined machines and solutions that are connected, responsive and predictive. GE is organized around a global exchange of knowledge, the "GE Store," through which each business shares and accesses the same technology, markets, structure and intellect. Each invention further fuels innovation and application across our industrial sectors. With people, services, technology and scale, GE delivers better outcomes for customers by speaking the language of industry. www.ge.com

Contact information

Americas: 1-855-YOUR1GE (1-855-968-7143)
gedigital@ge.com

www.ge.com/digital

©2015 General Electric. All rights reserved. *Trademark of General Electric. All other brands or names are property of their respective holders. Specifications are subject to change without notice.

