



Webpace Version 6.0 from GE Digital

Deliver advanced control and visualization over iPad, Android, and a Web browser

Increase operator agility and effectiveness to improve business Performance

Webpace from GE Digital offers an easy-to-use, full-featured Web and mobile client that enables you to extend, expand, and enhance your new or existing iFIX or CIMPLICITY applications systems from GE Digital. It enables full control and visualization over your company Intranet or secure Internet without the need to change or alter your software application and can be set up within minutes.

With Webpace, you can reduce costs, improve time to action, and expand analytic capability—driving sustainable advantages across all levels of your business, including management, operators, engineering, and IT levels.

Outcomes

- Increase information sharing across teams with a full-featured, secure-by-design Web and mobile client for iFIX or CIMPLICITY
- Speed the right actions with efficient navigation and quick access to information over the Internet, anywhere
- Save time with zero client configuration and the ability to port screens instantly
- Decrease costs with one server that renders three applications on your choice of client, including iOS, Android, and browser access
- Boost flexibility by dynamically adjusting control points on-the-fly and viewing multiple systems simultaneously
- Improve analytical and planning abilities with real-time data and information viewing



01 Extend your HMI/SCADA with the power of the Industrial Internet

Webpace extends 100% of your iFIX and CIMPLICITY system viewing and control abilities into a Web browser or tablet. A “zero-install” HTML5 client allows you to your applications from popular Web browsers on Windows, Mac, and Linux computers. For MAC OS X users, a dedicated app multi-monitor support, client sound, and Max OS X Gatekeeper support

Webpace doesn't compromise your proven applications, graphics, or functionality— providing a full-featured client and delivering comprehensive functionality over a browser.

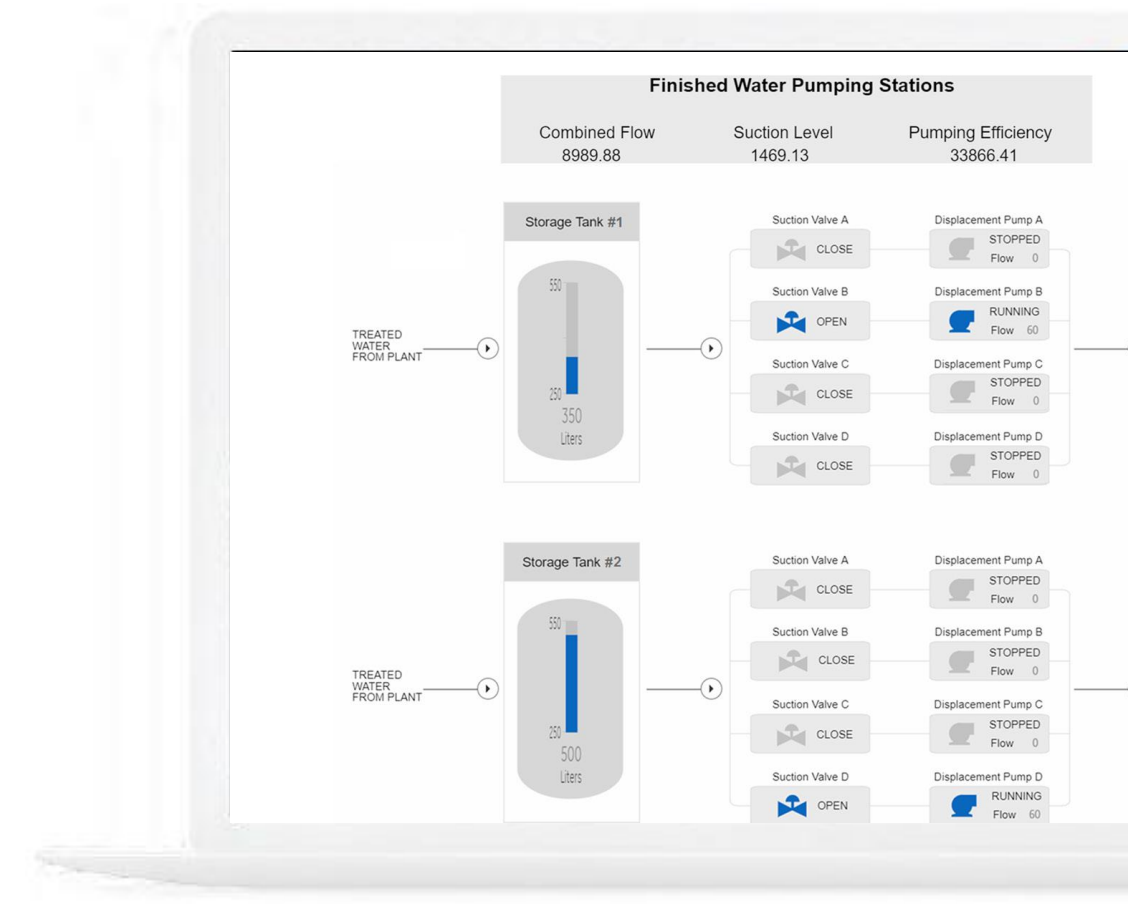
02 Increase information sharing with flexible, secure-by-design technology

With support for up to 70 simultaneous clients, Webpace enables new and existing systems to be dynamically expanded across the facility or globe. The solution enhances your user experience with the ability to run multiple Webpace clients and view many systems from one point. Additionally, Webpace allows you to manually configure a sandbox and white list entries for files and programs.

03 Gain full-featured mobility with the SCADA app

Easily and quickly harness the power of your HMI/SCADA on iPad or Android devices with minimal engineering effort. Download the free SCADA app and instantly connect to your runtime projects, and leverage the same full-featured capabilities of a standard client with full HMI/SCADA functionality, including third-party app support with no screen conversions required.

Thanks to the Mobile Sense technology, your application accessed from mobile devices, behave and respond more like mobile apps.



Webpace extends your application viewing and control abilities right into a Web browser—without compromising features, graphics, or functionality.

04 Increased security

Your application deserves the best protection. For that matter, Webpace leverages SSL/TLS Encryption (up to 256-bit AES) to ensure the security of the data that is transmitted over the network.



Webpace Version 6.0 from GE Digital

Deliver advanced control and visualization over iPad, Android, and a Web browser

Features

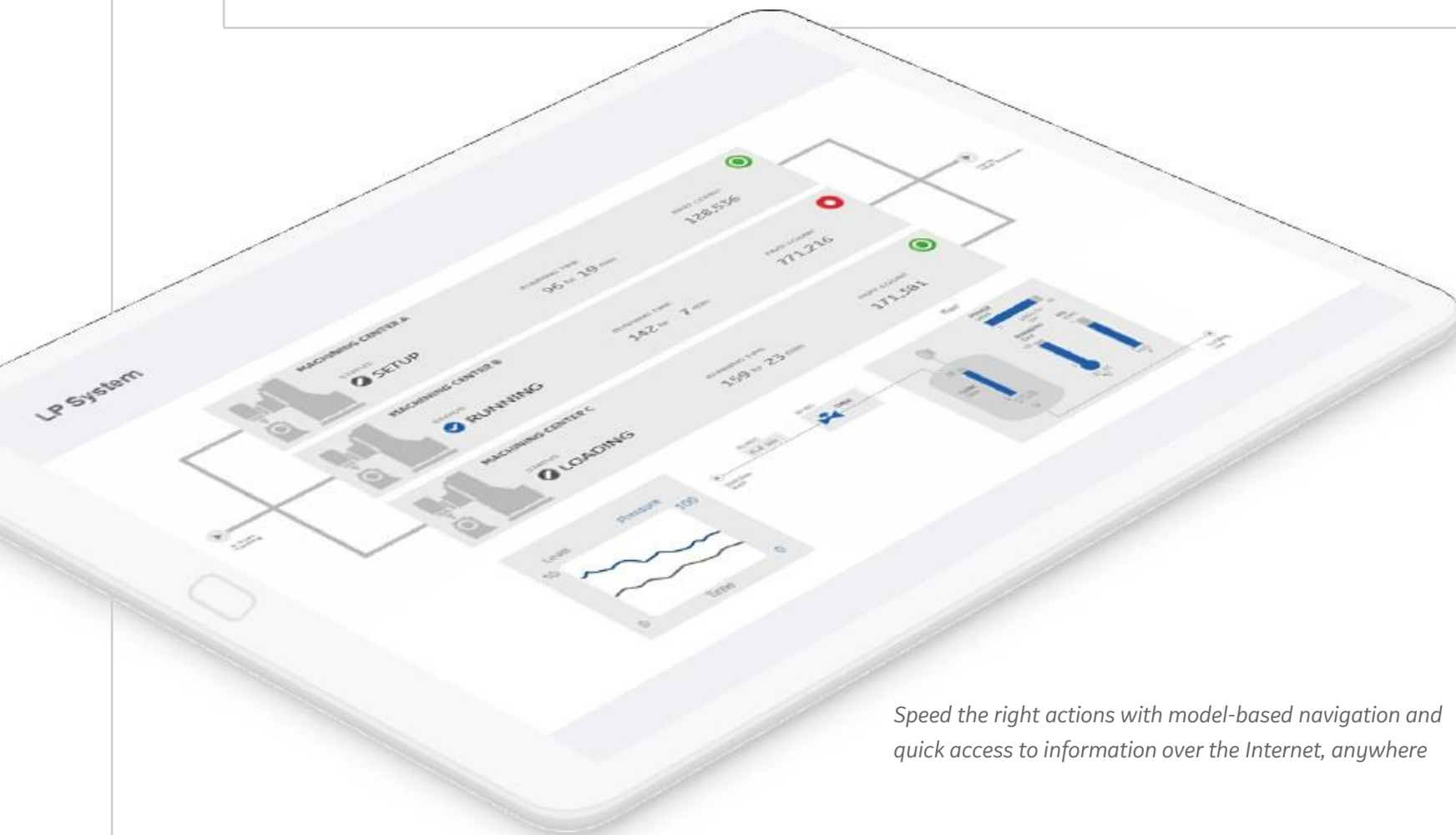
- New Zero-install HTML5 client, no third-party software required
- New option for strong encryption
- New App for MAC OS X - simplified installation, multi-monitor support, client sound, and Max OS X Gatekeeper support
- Client-side scaling support for high-resolution devices
- Mobile Sense Technology Mobile for a better UX on mobile devices
- Load balancing and high availability
- Full-featured Web and mobile client for iFIX or CIMPLICITY—with one server and real-time data updates
- No restrictions on secure containment of third-party controls; launch third-party apps triggered in iFIX or CIMPLICITY, control elements operable within Webpace and inherit security setup
- External access over the Internet, multi-tab browser support, remote access for debug and support
- E-signature enhances security and audit trail
- Support displays with animations
- View, acknowledge, and silence alarms and warnings
- Administration: Client disconnect, client session shadowing, SSL 56 bit encryption, port selection, maximum client limit

Software requirements

Webpace has many flexible configuration topologies and can be installed either on an independent dedicated server or your main application server.

- Server
 - Windows Server 2019 | Standard | Datacenter
 - Windows Server 2016 | Standard | Datacenter
 - Windows Server 2012 R2 | Standard | Datacenter
 - Windows Server 2008 R2 Service Pack 1 | Standard | Enterprise
 - Windows 10 | Professional | Enterprise
 - Windows 8.1 | Professional | Enterprise
 - Windows 7 Service Pack 1 | Professional | Ultimate | Enterprise
- Full VM Support including: VMware ESXi and Microsoft Hyper-V
- Web browsers
 - Microsoft Windows Internet Explorer 11
 - Mozilla Firefox 52 and later (standard and ESR, 32-bit and 64-bit) on Windows and Linux (32-bit)
 - Apple Safari 9.0 or later on Mac OS X
 - Google Chrome with Windows 7, Windows 8.1, Windows 10 and Chromebook
 - Microsoft Edge
- App for MAC OS X
- IOS and Android apps available free of charge

Hardware and software requirements are representative and may vary by customer deployment. Please consult the product documentation for more details



Speed the right actions with model-based navigation and quick access to information over the Internet, anywhere

Speed response to HMI/SCADA events and data by sharing information anywhere, anytime with Webpace for iPad, Android, and a browser.

[LEARN MORE](#)



Webpace Version 6.0 from GE Digital

Deliver advanced control and visualization over iPad, Android, and a Web browser

Services

In the world of Industrial Internet of Things (IIoT), organizations are able to optimize productivity, reduce costs, and achieve Operational Excellence. While this is an exciting time for opportunity and growth, it can also bring on new challenges, questions, and uncertainty. No matter where you are on your IIoT journey, GE Digital has the right services offering for you.

[Advisory Services](#) We can help you plan and start your IIoT journey in a way that aligns to your specific business outcomes.

[Managed Services](#) We can help you maintain your critical machines from one of our remote locations around the world using model-based predictive analytic technology.

[Implementation Services](#) Our experienced global Automation partners can implement a collaborative, multi-generational program that marries your existing investments to the right enhancements and technology.

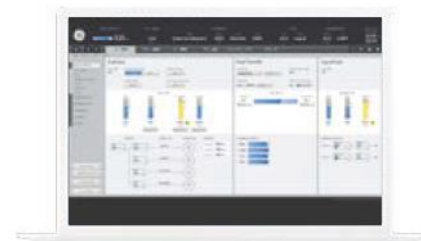
[Education Services](#) We specialize in education services to ensure that you're leveraging our solutions to the fullest extent with our training and certificate programs.

[Acceleration Plans](#) Let us help by ensuring that your business continues to operate at its highest efficiency, all while mitigating risks to your investments.

[Wurltech Security Services](#) Our solutions provide industrial-grade security for a wide range of OT network and application topologies.

Related Products

GE Digital's HMI and SCADA suite helps you precisely monitor, control, and visualize every aspect of your operations, enabling operators to make the best decisions faster.



iFIX

Gain visibility into your operations and secure agility for smarter decision making that drives results.

CIMPLICITY

Drive real-time visibility for smart operators with true client-server based visualization and control.

Operations Hub

A centralized environment for aggregating and visualizing contextual and situational information for industrial applications – supporting rapid application development and rich displays for faster operational response and better decision making

Continue your IIoT journey

Transforming your business requires foundational innovations that lay the groundwork for future success. It requires connecting assets and processes securely to drive operational efficiencies, reduce unplanned downtime and improve performance.

PREDIX



Predix

Innovate and transform your business with the cloud-based operating system for the Industrial Internet, purpose-built for industry.

Plant Applications

Maximize overall equipment effectiveness (OEE), improve production scheduling, and ensure product quality by leveraging real time production data

Historian

Optimize asset and plant performance through time-series industrial data collection and aggregation, leveraging Predix IIoT connectivity.

About GE

GE (NYSE: GE) is the world's Digital Industrial Company, transforming industry with software-defined machines and solutions that are connected, responsive and predictive. GE is organized around a global exchange of knowledge, the "GE Store," through which each business shares and accesses the same technology, markets, structure and intellect. Each invention further fuels innovation and application across our industrial sectors. With people, services, technology and scale, GE delivers better outcomes for customers by speaking the language of industry.

©2019 General Electric. All rights reserved. *Trademark of General Electric. All other brands or names are property of their respective holders. Specifications are subject to change without notice. 06 2019

Contact

Americas: 1-855-YOUR1GE (1-855-968-7143)
gedigital@ge.com
www.gedigital/digital