



GE Digital  
Alliance Program

February 14 – 17 | Napa, California

# Global Partner Summit 2017: *Competing to Win*





**Hewlett Packard  
Enterprise**

# Saudi Electric Case Study

Tripp Partain

Chief Technology Officer - GE  
Hewlett Packard Enterprise



GE Digital  
Alliance Program

# Saudi Electric IIoT Opportunity

- Saudi Electric Company (SEC) looking to become one of the world's most efficient and reliable power generation operations
- Anticipated 50% increase in electric energy by 2020
- Selected GE as its solutions provider to drive a nationwide digital transformation of electricity in Saudi Arabia focusing on:
  - Increasing Reliability, Reducing Outages
  - Elevating Efficiency and Reducing Fuel Consumption
  - Reducing Greenhouse Gas Emissions
  - Responding Dynamically to Peaks in Electricity Demand



# Saudi Electric IIoT Challenges

- SEC is leveraging GE's advanced industrial software and technologies to drive the IIoT solution.
- The GE SW portfolio is a combination of traditional client server and Predix cloud based architectures
- However, regulatory and regional restrictions required the GE cloud-centric solutions to be delivered on premise
- **Challenge:** Simplify how SEC can deploy traditional and cloud based GE SW solutions in a simple, on premise model



# HPE Corporate Strategy



We make **Hybrid IT** simple

Traditional Data Center

Private Cloud

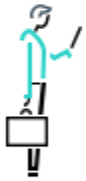
Managed Cloud Services

Public Cloud

Traditional Data Center

Software-defined Infrastructure and Private Cloud

Multi-cloud Partnerships



We power the **Intelligent Edge**

Campus & Branch

Industrial Internet of Things



We have the **expertise to make it happen**

Advisory & Professional Services

Technical Services

IT Consumption Models



GE Digital  
Alliance Program

# HPE GE Digital Strategy

  
**Hewlett Packard  
Enterprise**



We make  
**Hybrid IT** simple

Traditional Data Center

Private Cloud

Managed Cloud  
Services

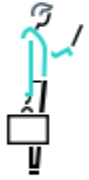
Public Cloud

Predix Box

Predix Cloud  
Infrastructure

Networking

OEM



We power the  
**Intelligent Edge**

Predix Appliance

Predix Edge



We have the **expertise to  
make it happen**

Predix Advisory &  
Development Services

Predix Technical  
Services

Predix HW  
Consumption  
Models



GE Digital  
Alliance Program

# HPE / GE Solution for SEC



- SEC needed a flexible, on premise solution to balance the combination of traditional SW and cloud based SW solutions
- SEC/GE/HPE collaborated to leverage the Hyper Converged 380
  - Based on the highly configurable HPE ProLiant DL380 Gen9 Server
  - Combined with VMware vSphere® and HPE management SW for increased storage, network, compute and graphics options
  - Significantly improves flexibility in deployment
- HPE also provides support options for the SEC on premise deployments, including GE SW updates



# Additional GED/HPE Solutions



- Further optimized GE Predix / HPE converged systems
- Edge-centric solutions combining a subset of GE Predix micro-services and additional IIoT offerings (GE and 3<sup>rd</sup> party)
- Complete support solutions for hybrid and edge IIoT solutions
- Flexible monetization options (CAPEX, OPEX, Hybrid)
- Continuous Co-Innovation between GED/HPE





# Questions





# GE Digital Alliance Program

