

GE Digital

# Activating Licenses Offline Using a Local License Server

January 2019



## **Introduction:**

This document shows you how to activate licenses offline using a Local License Server.

The example in this document shows you how to perform the following steps:

1. From an offline Local License Server, create a request file with the license codes for the GE Cloud License Server to verify.
2. Use a portable media device to transfer the request file to an online computer.
3. From an online computer, request a response file, which sends the request file to the GE Cloud License Server for verification. The GE Cloud License Server returns a response file containing the needed information to activate and update licenses on the Local License Server.
4. Transfer the response file using the portable media device to the offline Local License Server to activate and update licenses.

Local License Server version is 18.5

License Client version is 18.5



# Local License Server Install and Configuration

Before beginning this process, make sure you have the product activation codes in the email that GE sent you after processing your order. You need these activation codes when adding licenses.

The following is an example of this email with the activation code column outlined.

Dear User,

Thank you for purchasing GE software! Order No. 123456789 has been processed and is ready for download and activation.

**Ref: Purchase Order #:** Demo

**Order and Activation Information**

Item	Software	Qty	Description	Serial Number	Legacy Serial Number	Contract Level	Contract End	Activation Code	Action
1	HMI/SCADA - iFIX	1	iFix v5.9 English Demo License	3-12345678-001-001		None		[Redacted]	New
2	HMI/SCADA - iFIX	1	iFix v5.9 English Demo License	3-12345678-001-002		None		[Redacted]	New

**Step 1: Download Software**

1. [Click here to log into GE to download your software.](#)  
**Account:** XYZ company, INC.  
**User Name:** [yourusername@abc.com](#)
2. Select the product and version you wish to download and install.
3. Download and install Proficy Common Licensing (this is located on the same page as the product you've chosen to install).
4. Refer back to this email for the activation code(s) above to complete the software installation.

**Step 2: Activate Software**

[Click here for instructions on Activating your Software](#)

**Support Information**

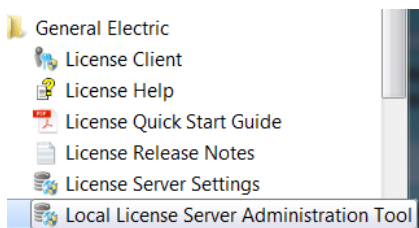
[If you purchased a Support Services Contract with your Software, please click here to download a copy of the Support and Services Guide.](#)

For additional help, please review the License documentation (Start->All Programs->Proficy Common->License Documentation).

Product updates and additional valuable Technical Support information is also available at <http://geautomation.com/licensing>

Verify the latest Common Licensing software is installed and running on the offline computer and the online computer. Download this software from the [GE Software Product Licensing website](#).

To view which Common Licensing software is installed, go to **Start>All Programs>General Electric**.



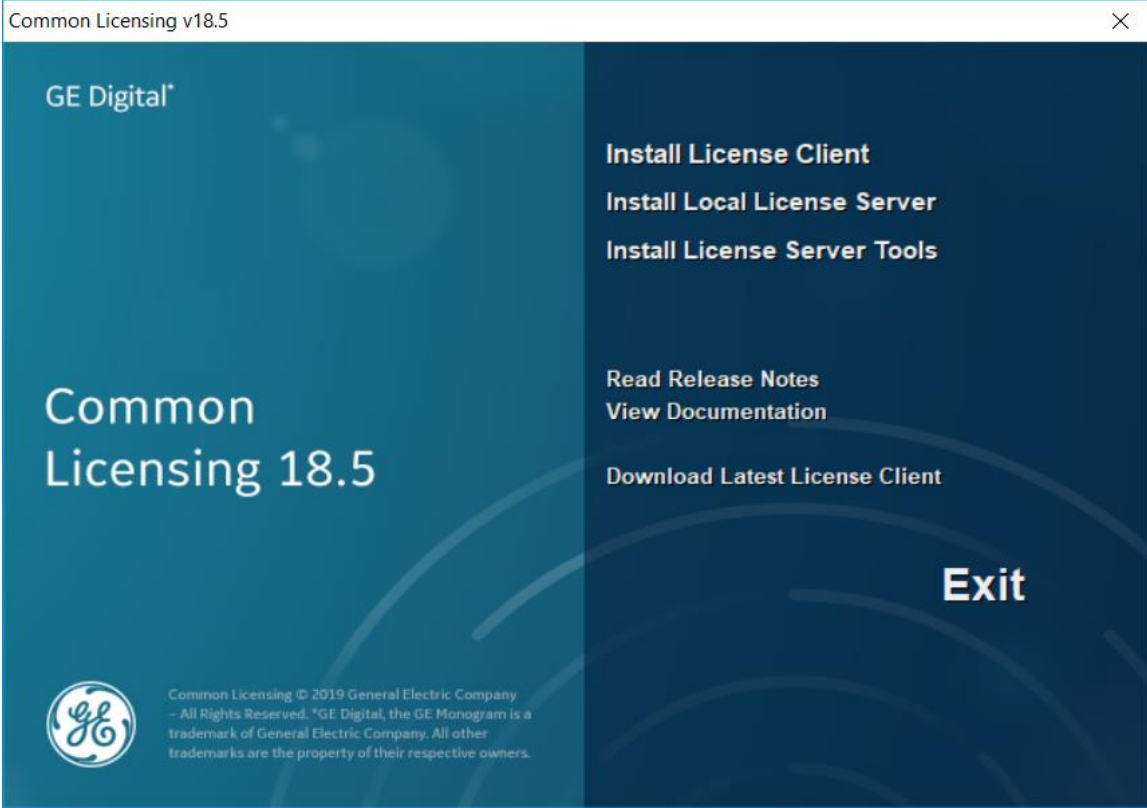
*Although the **Local License Server Configuration Tool** appears in the General Electric folder of the Start menu, **the actual Local License Server may not be installed.***

To verify the Local License Server is installed, go to **Start>Control Panel>Programs and Features** and sort by name. The following list shows the Local License Server Administration Tool is installed but **not** the Local License Server.



Local License Server Administration Tool	GE Digital	7/10/2018	15.7 MB	00018.00004.01493.0...
--	------------	-----------	---------	------------------------

Run the Common Licensing installer and the following screen appears. Click **Install Local License Server**. The Common Licensing installer starts the install of the Local License Server. Answer the prompts, and then click **Finish**.

Note that you install the Local License Server Administration Tool by selecting **Install License Server Tools**.

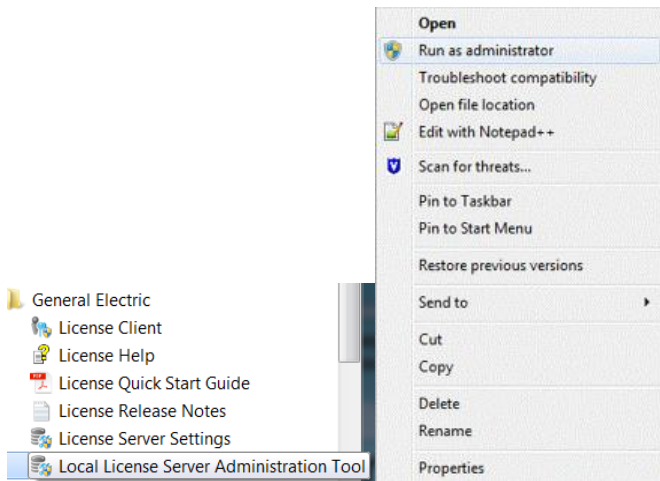


To verify the Local License Server is installed, go to **Start>Control Panel>Programs and Features** and sort by name. The **Local License Server** is now in the list.


 Local License Server	GE Digital	6/22/2018	32.5 MB	00018.00004.01480.0...
 Local License Server Administration Tool	GE Digital	7/10/2018	15.7 MB	00018.00004.01493.0...

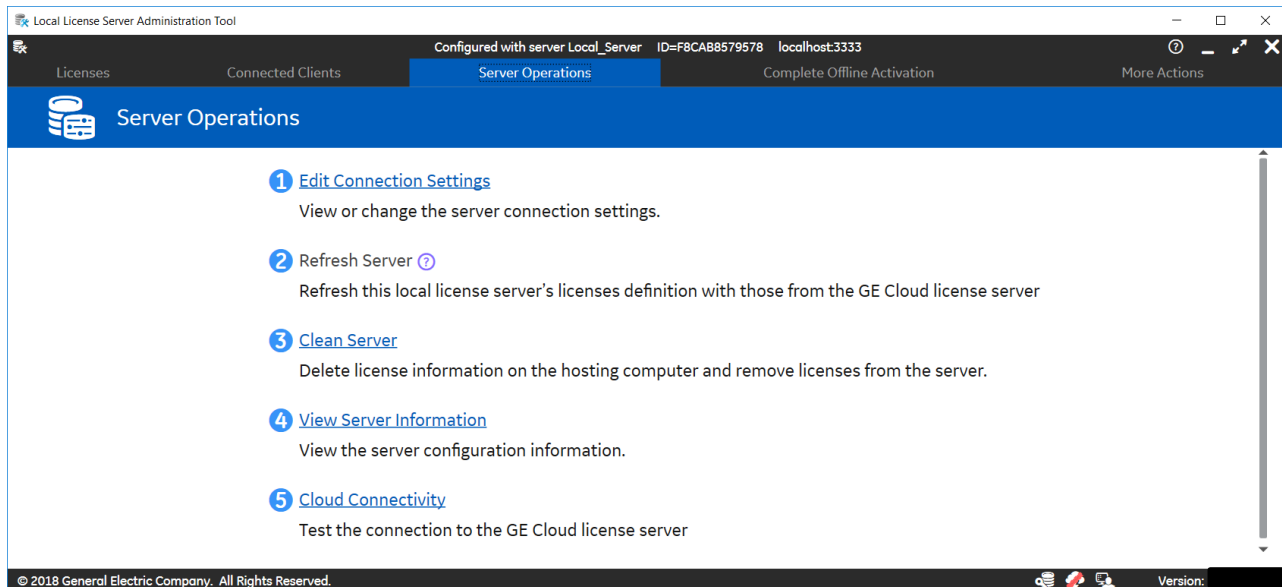
## From the Local License Server Computer without Internet Access:

Begin the Local License Server Administration Tool by going to **Start>All Programs>General Electric>Local License Server Administration Tool** (right click and run as administrator). Acknowledge any User Access Control prompts.

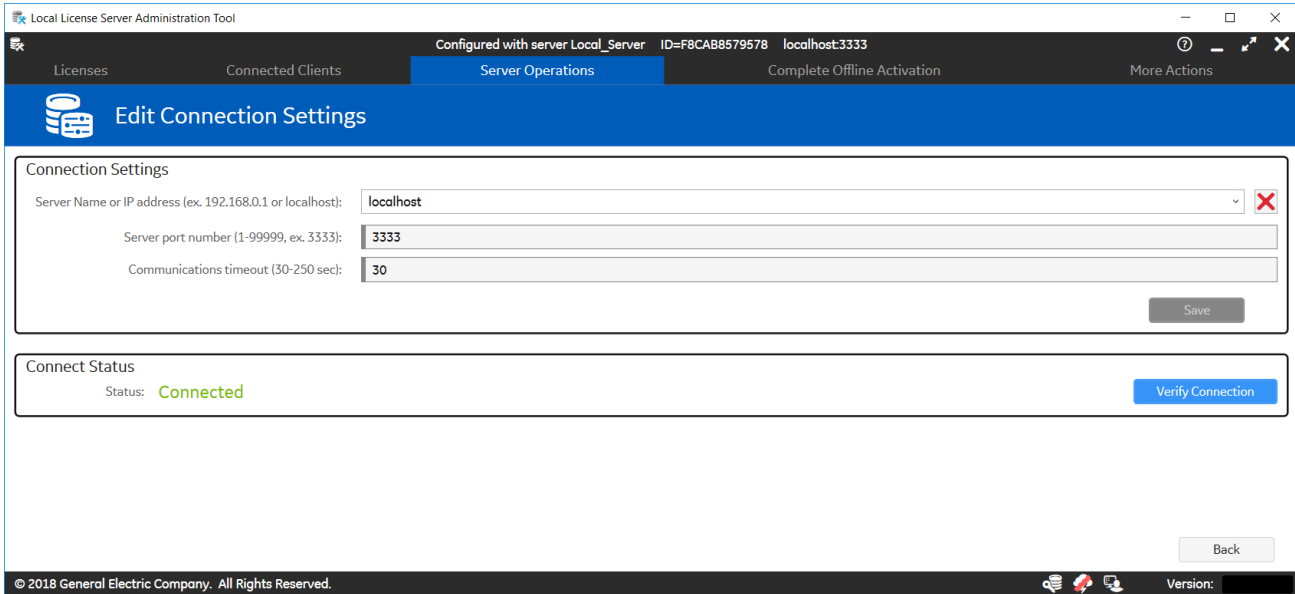


The **Local License Server Administration Tool** appears. Select the **Server Operations** tab, and then **1 Edit Connection Settings**.

The  icon in the footer indicates the computer is not connected to the GE Cloud License Server.



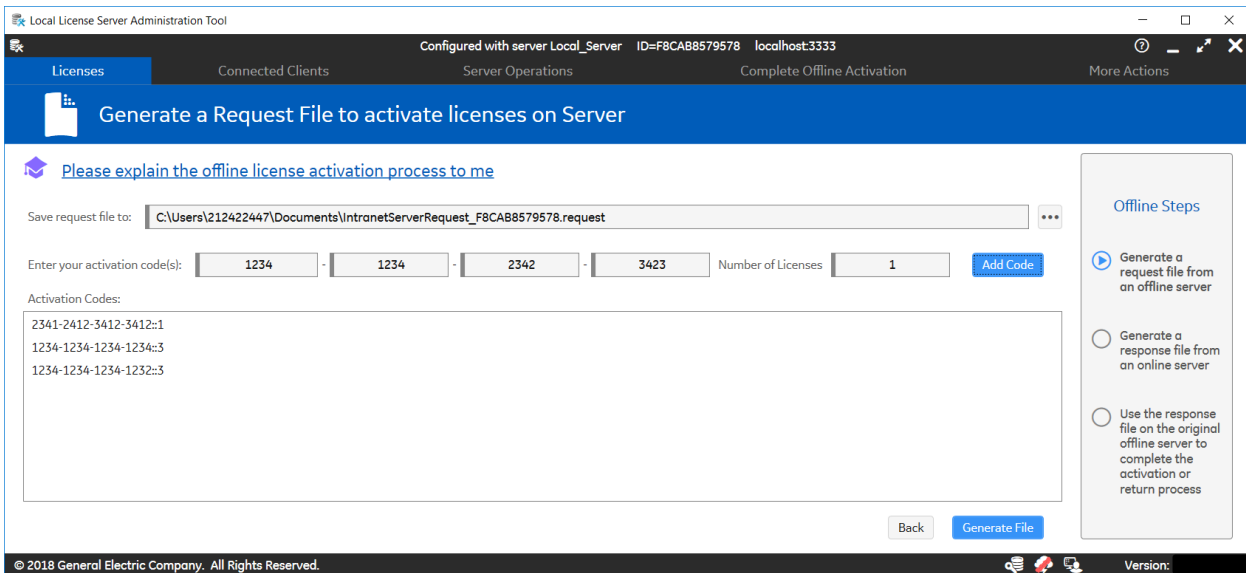
The **Edit Connection Settings** page shows the sever is set to localhost to run locally. The actual connection to the localhost is the one being verified **and has no Internet access**.



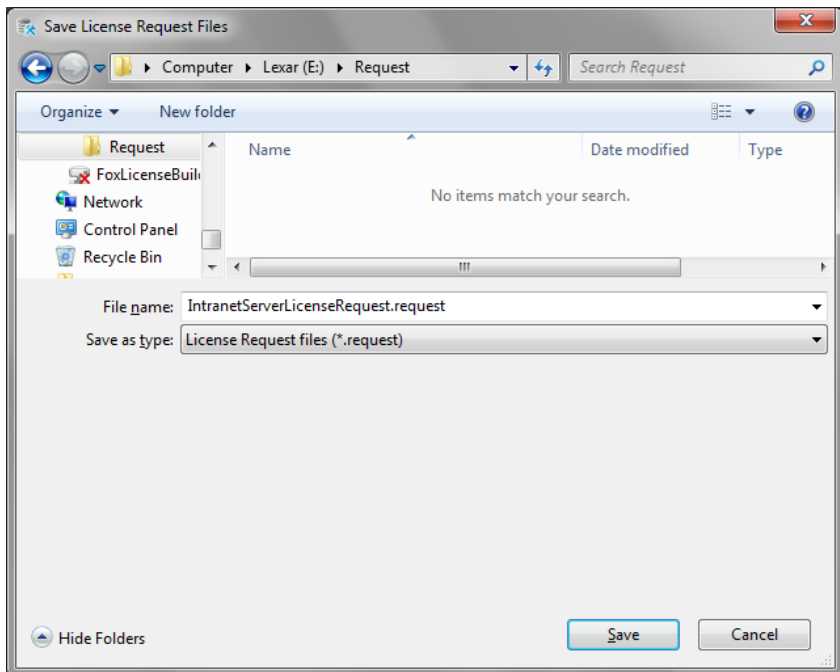
Select the **Licenses** tab, and then select **Add Licenses**. When the Local License Server is not connected to the GE Cloud License Server, the **Generate a Request File to activate licenses on Sever** page appears.

Specify the request file path in the **Save request file to** field. By default, the request file name uses the computer name.

For each license you want to add in the request file, enter the activation code and the **Number of Licenses**, and then click **Add Code**. As you enter these codes, they appear on the page. When finished adding the activation codes, click **Generate File**.




Verify the portable media device is connected and detected on the computer. Navigate to this device, select the request file, then click **Save**.

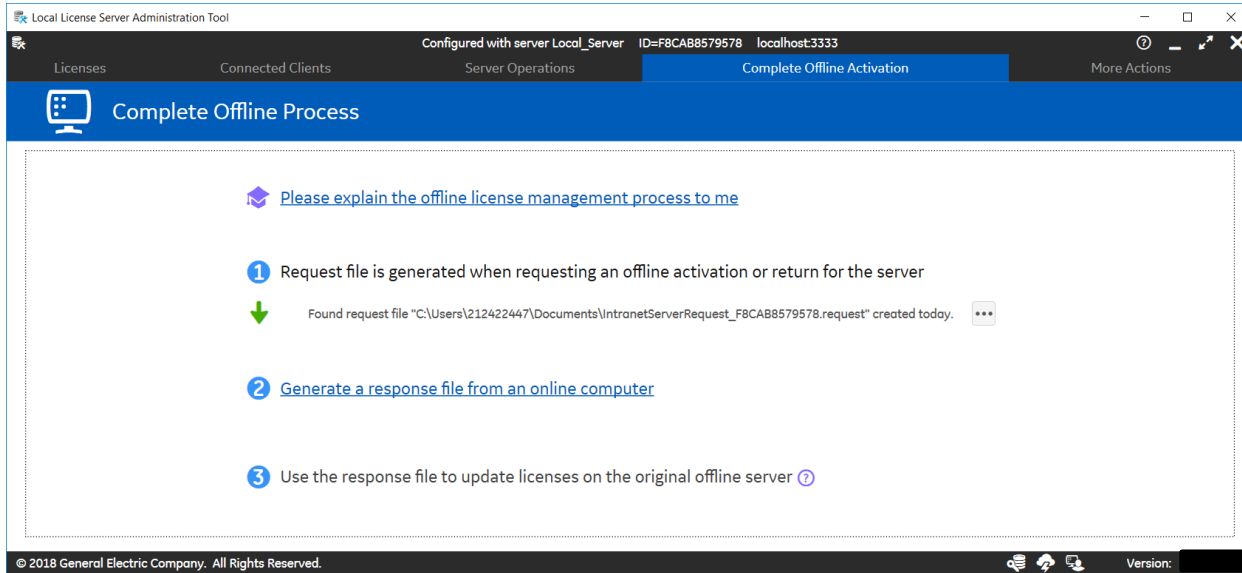




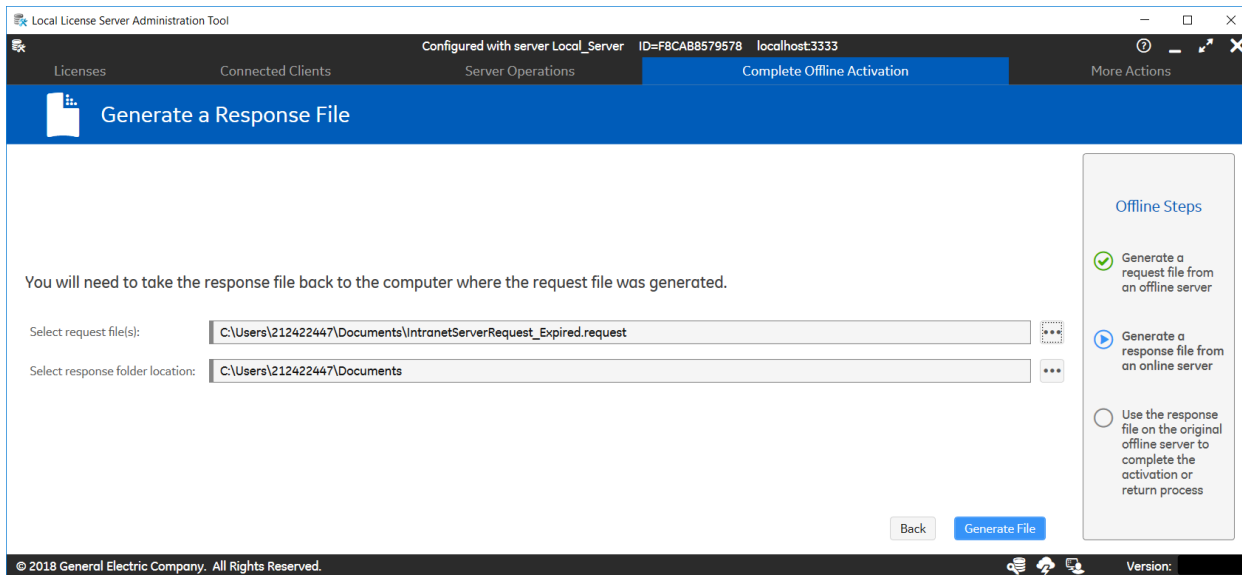
## From the Computer with Common Licensing and an Internet Connection:

Using the portable media device, transfer the request file to an online computer with access to the GE Cloud License Server. On the **Complete Offline Activation** tab, select **2 Generate a response file from an online computer**.

The  icon in the footer displays without a red line to indicate the computer is connected to the GE Cloud License Server.

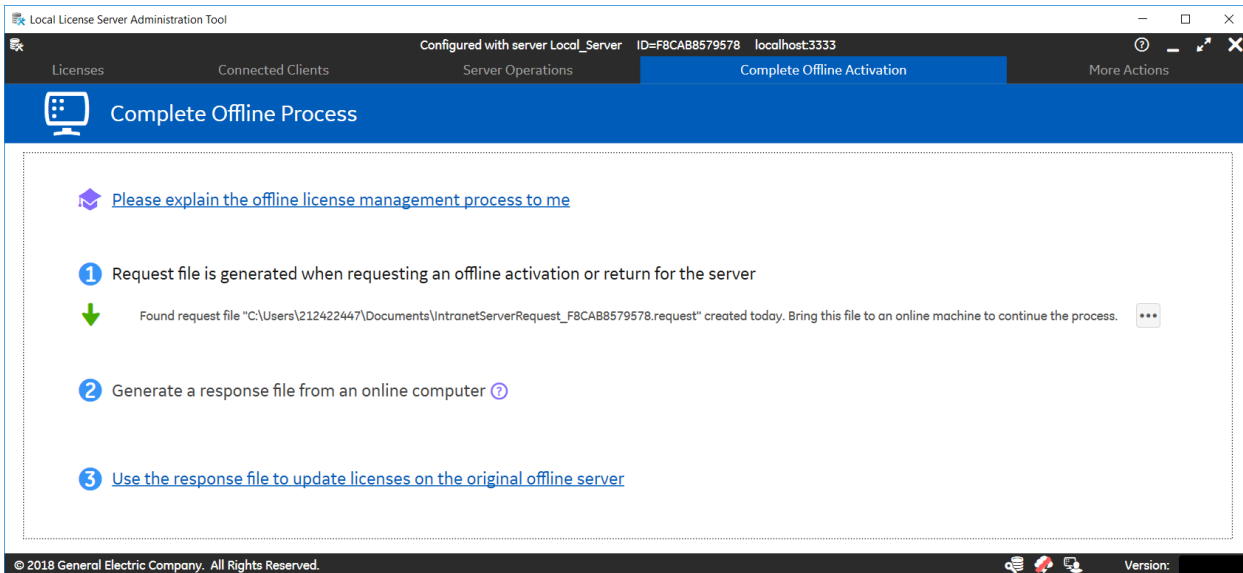


On the **Generate a Response File** page, enter the request file path and the folder in which to save the response file, and then click **Generate File**.

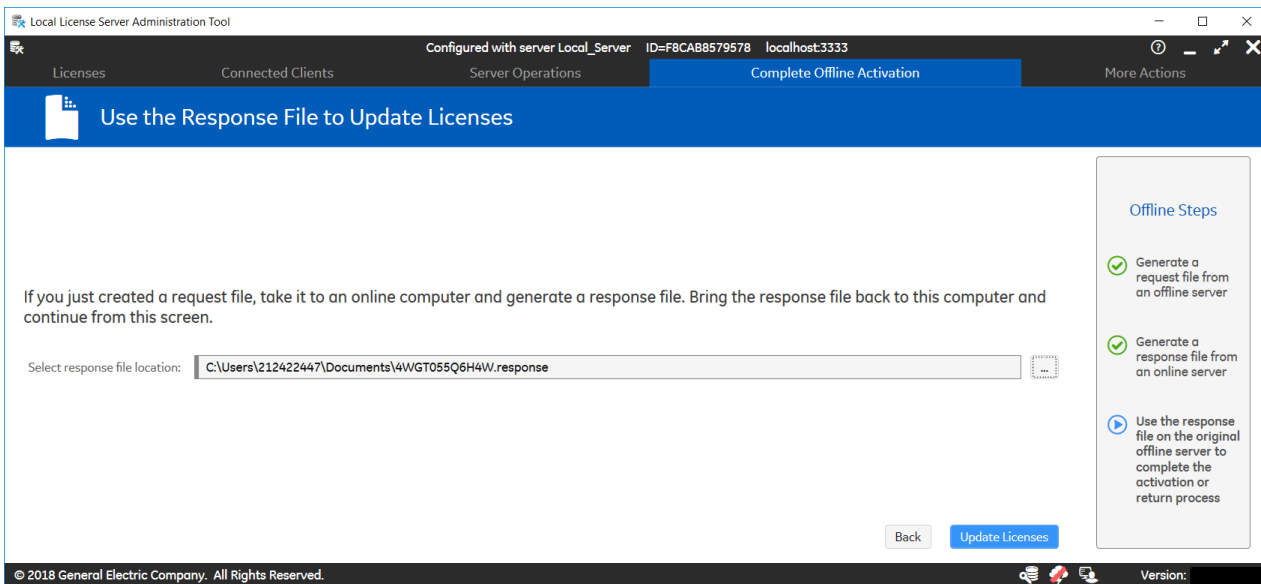


## From the Original Offline Computer:

Within 24 hours, transfer the response file from the device to the original offline Local License Server. On the **Complete Offline Activation** tab, select **3 Use the response file to update licenses on the original offline server**.



Enter the location of the response file and then click **Update Licenses**.



Select the **Licenses** tab to view the updated licenses on the offline Local License Server.

The screenshot shows a software interface with a dark blue header bar containing navigation tabs: Licenses, Connected Clients, Server Operations, Complete Offline Activation, and More Actions. Below the header is a blue banner with a key icon and the text "Licenses Activated On Server". Underneath are three buttons: "Add Licenses", "Remove Licenses", and "Reserve Licenses", along with "Update Table" and "Save List To File". The main area contains a table with the following data:

Activation Code	Product Name	Description	Total	In Use	Available	Reserved	Expiration	Client Id	Lease Expires On	Client Alias
	Proficy Plant Applications English	Plant Applications 7.0 50 Plant apps...	8	1	6	1	2019-11-30 23:59:59	4666RDRP100X	2/6/2019 11:59:59 PM	MachineName/VM-PROD-MGR
	Proficy Plant Applications English	Plant Applications v6.2 SP 3 5 Plant...	8	0	8	0	2019-11-30 23:59:59			
	Proficy HMI/SCADA - SIMPLICITY English	Cimplicity v8.2 Server Standard Dev...	5	0	5	0	2019-12-15 23:59:59			
	Proficy Historian English	Historian v6.0 Enterprise 20000000...	1	0	1	0	2028-12-31 23:59:59			
	ControlST English	ADT v7.1 GE Engineering1	4	0	4	0	2019-08-24 23:59:59			

This concludes the introduction to activating licenses offline from a Local License Server.