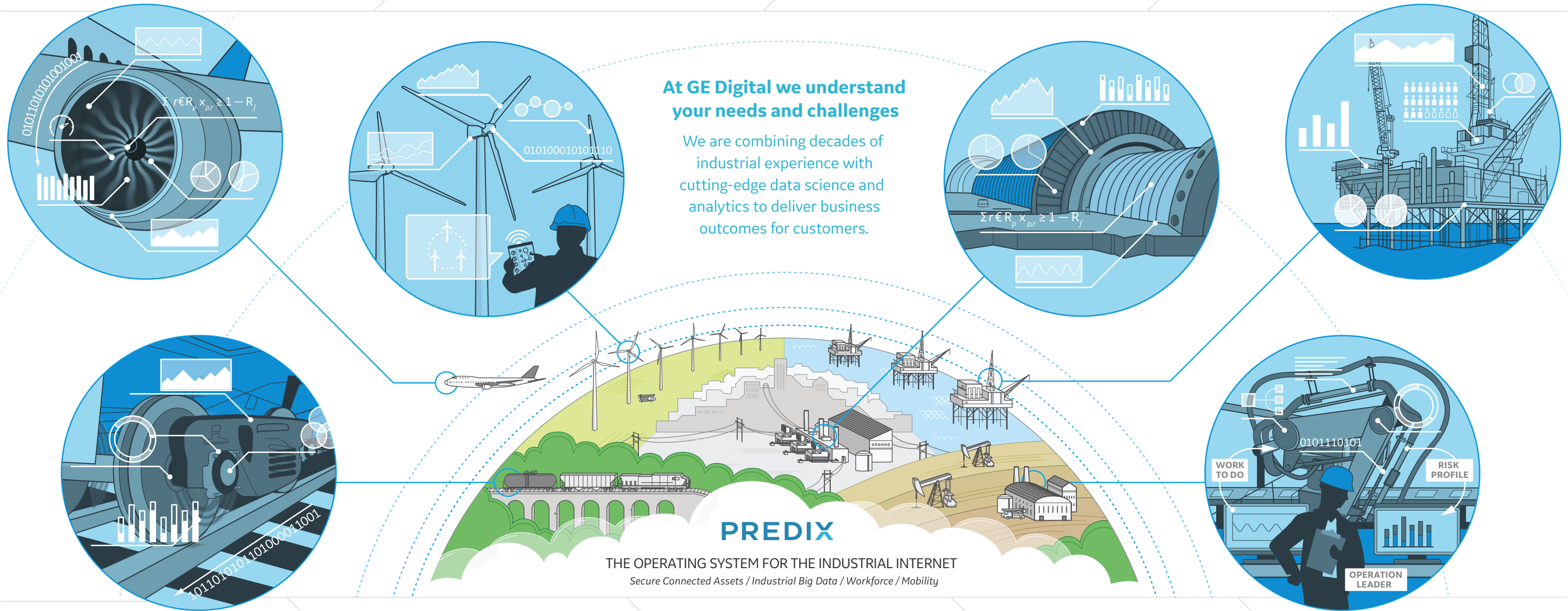
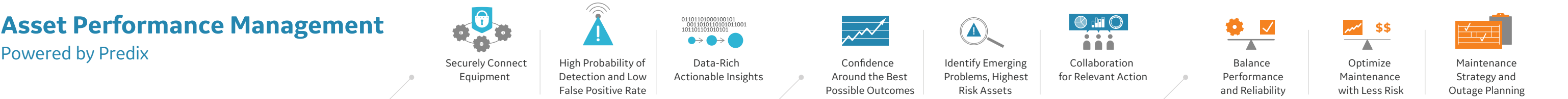


# Asset Performance Management

Powered by Predix



## Maximize the performance and value of your assets

Drive safer and more reliable operations while facilitating optimal performance at a lower sustainable cost by enabling intelligent asset strategies.

## Machine & Equipment Health

Get a unified view of your assets' current state and health—anytime and anywhere.

- |  |                                  |
|--|----------------------------------|
| <b>Connectivity</b>                    | <b>Criticality analysis</b>      |
| <b>Data management</b>                 | <b>Event management</b>          |
| <b>EAM integration</b>                 | <b>Recommendation management</b> |
| <b>Condition monitoring</b>            | <b>Benchmarking</b>              |
| <b>Data analysis and visualization</b> |                                  |

## Reliability Management

Achieve less unplanned downtime by predicting equipment issues before they occur.

- Predictive analytics**
- Case and collaboration management**
- Knowledge management**
- Root cause analysis**
- Reliability analysis**

## Compliance & Integrity Management

Ensure asset integrity and compliance by monitoring changing risk conditions.

- Hazard analysis**
- Safety lifecycle management**
- Risk based inspection**
- Inspection management**
- Thickness monitoring**

## Asset Strategy Optimization

Optimize across availability, reliability, risk, and costs through intelligent asset strategies.

- Reliability centered maintenance**
- Failure mode and effects analysis**
- Strategy management**
- Strategy library**
- Lifecycle cost analysis**
- Financial and risk simulation.**