



Batch Execution

Driving your business forward with a proven, scalable and flexible solution

Batch Execution from GE is one of the most powerful and feature-rich batch automation solutions on the market today. Its long history of reliability and scalability has increased product quality, consistency and efficiencies across many market segments.

Batch Execution software features a fully graphical and straightforward application development environment, empowering engineers to quickly and efficiently deploy batch automation, regardless of the underlying equipment.

The solution also includes data collection, robust batch management, clear process visualization, and powerful supervisory control capabilities - enabling a complete batch solution for small, medium, large or multi-site applications.

Powerful and easy real-time control

Batch Execution helps you efficiently control batches and monitor the execution performance of batches in real time. Using the Batch Client applications, operators can take control of complex processes with ease.

Additionally, Batch Execution provides integrated client control, allowing HMI/SCADA applications such as GE HMI/SCADA - iFIX* and CIMPLICITY* to include batch management within the application. Thus, operators can monitor the progress of a batch and control the execution of a recipe, as well as the status of the process from the same supervisory and control environment.

Smarter and faster development

The software solution delivers a fast, simple and effective batch development platform, which allows you to model your plant floor equipment, add equipment paths, equipment priority and status, and create and manage reusable recipe components, all using the S88.01 models. The workspace enables you to easily edit equipment and recipes, develop pictures, and even configure security and alarms.



Benefits

- Fast deployment with lower total cost of ownership
- Quicker time to market with enhanced information management capabilities
- Increased efficiency
- Reduced waste and increased product quality

Features

- ISA S88.01 Compliant System provides a standard structure for your plant floor, simplifying the development of batch systems.
- IEC 61131-3 Sequential Function Chart programming language provides a simple graphical language for developing procedure flow in recipes.
- Formulation Management allows engineers to reuse validated recipe procedures with predefined parameter sets.
- Campaign Management simplifies the operator experience of fulfilling large process orders by accepting a process order and scheduling a list of batches.
- Transition Breakpoints allow engineers to define temporary pause points in executing batches.

Batch Execution

Improved security and compliance

Batch Execution delivers point of entry verification through Electronic Signatures in the active controls and Recipe/Equipment editors - supporting 21 CFR Part 11 compliance by enabling equipment and recipe auditing and version control. In addition, Batch Execution centralizes the storage location for e-records with encrypted store-and-forward technology that automatically provides a runtime and configuration audit trail.

Open and layered solution

Batch Execution seamlessly integrates with any OPC-compliant HMI/SCADA, PLC-based or DCS system, allowing OPC browsing to establish connection and automatic creation of tags.

Through a robust set of tools, open architecture, and an easy-to-use graphical interface, Batch Execution can help you create a more efficient and consistent production environment.

You can also customize your Batch Execution-based solutions using our Batch Integration Services (BIS) - a Microsoft® DNA model that enables you to integrate with a diverse array of third-party MES and ERP applications. With BIS, you can extend your Batch system by creating custom applications using Visual Basic or C++.

Helping you find the golden batch

You can extend the power of Batch Execution using GE Plant Applications' Batch Analysis tool. This optional capability provides manufacturers with the ability to optimize batch production, utilizing time series and historical analysis tools. The results used in conjunction with Formulation Management enable consistent reproduction of the Golden Batch.

Enabling success today and tomorrow

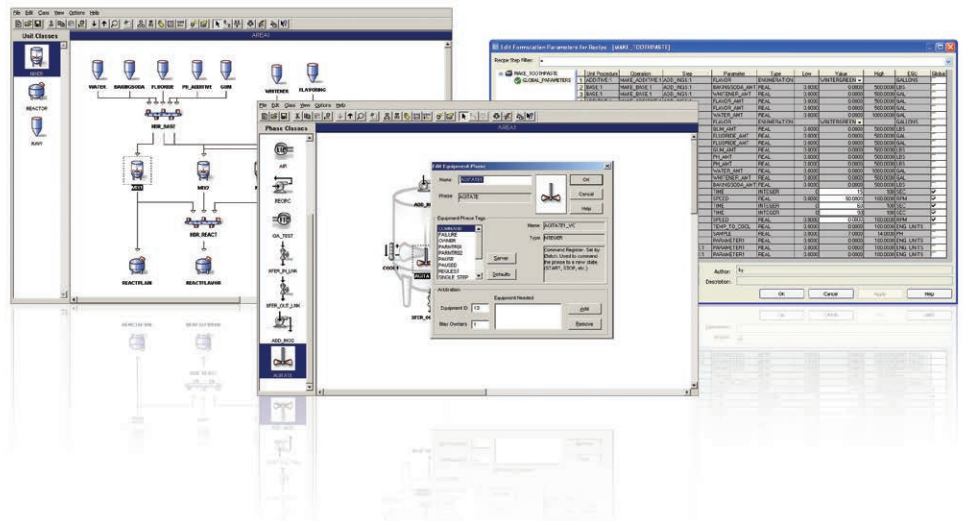
Offering tight integration with our software suite for a complete solution, Batch Execution leverages an open system design to protect your current and future investments. It's a powerful and scalable solution that delivers unprecedented insight into your operations - enabling increased productivity and a lower total cost of ownership for a sustainable advantage.

Requirements

Operating System

- Windows 7, 8, or 10
- Windows 2003, 2008, or 2012 Server
- Windows Vista Professional
- Windows® XP SP1 or higher

GE Batch supports Virtualization.



For more information, visit www.ge.com/digital

www.ge.com/digital

Contact Information

Americas: 1-855-YOUR1GE (1-855-968-7143)
International: gedigital@ge.com

About GE

GE (NYSE: GE) is the world's Digital Industrial Company, transforming industry with software-defined machines and solutions that are connected, responsive and predictive. GE is organized around a global exchange of knowledge, the "GE Store," through which each business shares and accesses the same technology, markets, structure and intellect. Each invention further fuels innovation and application across our industrial sectors. With people, services, technology and scale, GE delivers better outcomes for customers by speaking the language of industry. www.ge.com

©2016 General Electric. All rights reserved. *Trademark of General Electric. All other brands or names are property of their respective holders. Specifications are subject to change without notice.
03.16