



# Proficiency Plant Applications 2023

Common Dialogs



**Proprietary Notice**

The information contained in this publication is believed to be accurate and reliable. However, General Electric Company assumes no responsibilities for any errors, omissions or inaccuracies. Information contained in the publication is subject to change without notice.

No part of this publication may be reproduced in any form, or stored in a database or retrieval system, or transmitted or distributed in any form by any means, electronic, mechanical photocopying, recording or otherwise, without the prior written permission of General Electric Company. Information contained herein is subject to change without notice.

© 2023, General Electric Company. All rights reserved.

**Trademark Notices**

GE, the GE Monogram, and Predix are either registered trademarks or trademarks of General Electric Company.

Microsoft® is a registered trademark of Microsoft Corporation, in the United States and/or other countries.

All other trademarks are the property of their respective owners.

We want to hear from you. If you have any comments, questions, or suggestions about our documentation, send them to the following email address:

[doc@ge.com](mailto:doc@ge.com)

## Table of Contents

Common Dialogs.....	2
Comment Editor Dialog Box.....	2
Edit <group name> Membership Dialog Box.....	2
Export Configuration Dialog Box.....	3
External Link Editor Dialog Box.....	4
Importing Configuration Information.....	4
Object Security Dialog Box.....	5
Specification History Viewer Window.....	5
User Level Authentication Dialog Box.....	6


## Common Dialogs

Common dialog topics present information about common dialog boxes found in Plant Applications. These dialog boxes are encountered in multiple places.

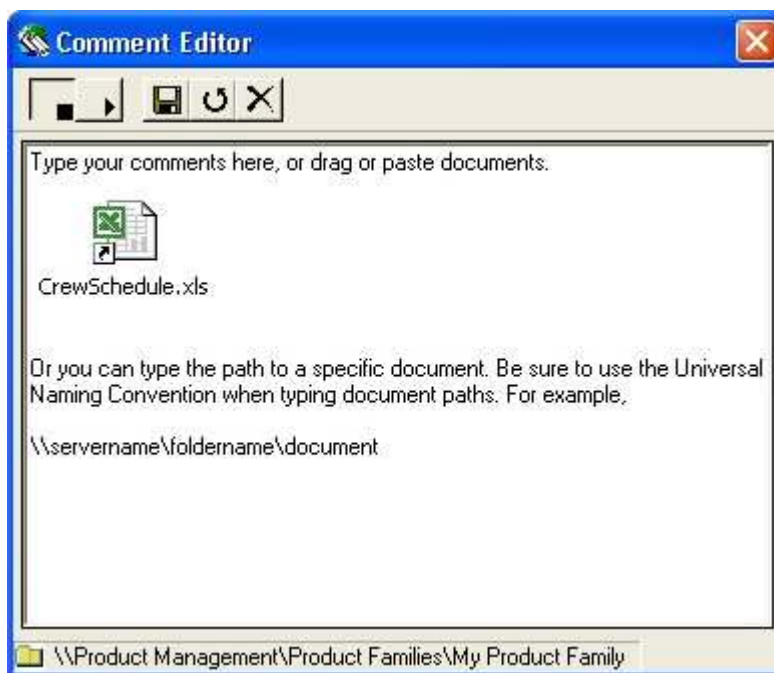
### Comment Editor Dialog Box

The **Comment Editor** dialog box enables you to attach documents or comments to objects in the Plant Applications database. You can type comments, or you can drag or paste documents into the dialog box. If you type the path to a document, you must use the Universal Naming Convention (UNC) for the file path to avoid any drive letter conflicts when the comment is viewed from a different client computer.

 Click the **Save** button to save your changes.

 Click the **Revert** button to undo any changes that you have not saved.

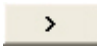
 Click the **Delete** button to delete comments or documents.



### Edit <group name> Membership Dialog Box

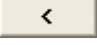
The **Edit <group name> Membership** dialog box allows you to add or remove members from groups.


The left pane displays a list of objects that are available and are not members of a group. The right pane displays a list of objects that are current members of the group.

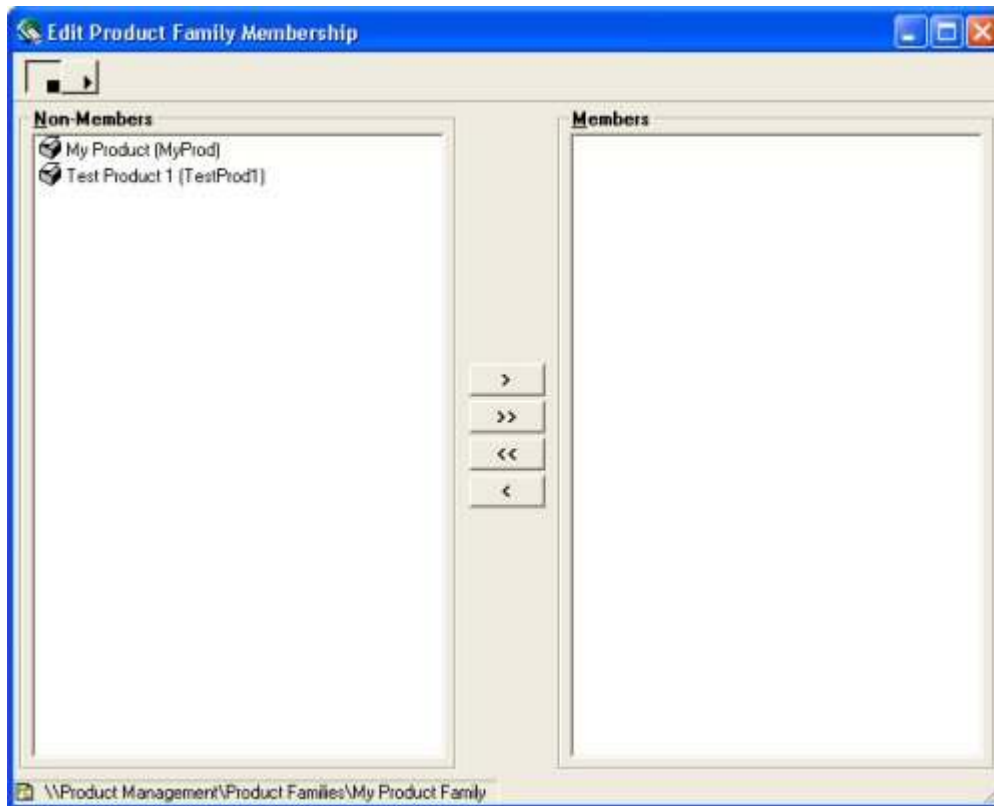
To add one object, select the object and click the  **Move Selected** button.

To add all objects, click the  **Move All** button.

## Common Dialogs

To remove one object, select the object and click the  **Remove Selected** button.

To remove all objects, click the  **Remove All** button.



## Export Configuration Dialog Box

When you select an object to export, Plant Applications automatically opens Excel and creates the necessary worksheet(s) within an Excel workbook. After the workbook has been created, you can edit the object's information within the workbook. Then, you can import the information back into Plant Applications, either on the same server or on a different server.

---

*You must have **Administrator** access to the **Administrator security group** to export objects.*

*Before you begin the export, you should close all instances of Excel, unless you want to export the information into an existing workbook.*

---

The options available in the **Export Configuration** dialog box will depend on the node from which you choose to export. If only a single option is provided, you must select that option in order to complete the export.




Plant Model Configuration Export dialog box

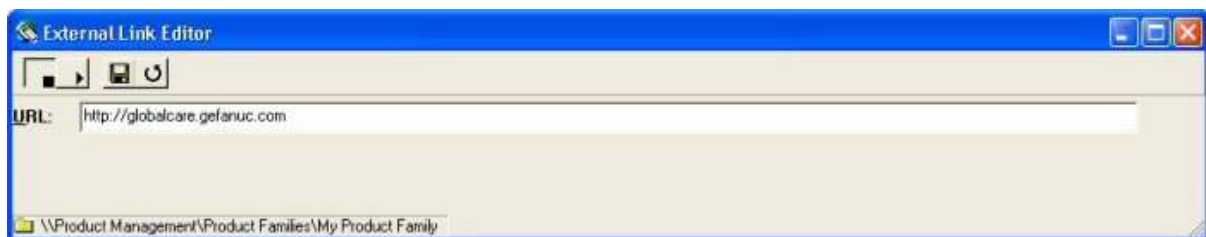
To use the Export Configuration dialog box:

1. Right-click on the node from which you want to export configuration information and click **Export <object name>**. The **Configuration Export** dialog box appears.
2. Select at least one option and click **OK**. This will open Excel and create the necessary worksheet(s) for you. You must save the Excel workbook before you can import the configuration information.

## External Link Editor Dialog Box

The **External Link Editor** dialog box enables you to attach links to a web site or web page to objects in the Plant Applications database, such as product families, variables groups or variables.

To use the **External Link Editor** dialog box, type the URL of the web site or web page and then click  **Save**.



## Importing Configuration Information

You can import objects into Plant Applications, either on the same server or on a different server. Importing can help minimize or eliminate tedious data entry of information that may already exist in Plant Applications. Additionally, you can create and export "template" objects, such as variables, edit the worksheets and then import the edited objects into Plant Applications.

If your workbook contains multiple objects, each on a separate worksheet, Plant Applications will import everything that you've selected on each worksheet, in the correct order. For example, if your workbook contains a worksheet of exported site users and a worksheet of exported production lines and you want to import only site users, select only the site users you want to import.

Keep in mind that you can change the information in your worksheet, and the changed information will be imported.

---

You must have **Administrator** access to the **Administrator security group** to import or export objects.

---

To import configuration information:

1. Open the Excel workbook that contains the exported objects.
2. In the workbook, under the **Selected** column, place an **X** in the cell that corresponds to the object(s) you want to import.
3. Log in to the Plant Applications Administrator program.
4. Right-click on the object you want to import and click **Import Configuration**.

---

*Keep in mind that everything that you've selected on your workbook will be imported into the correct order.*

---

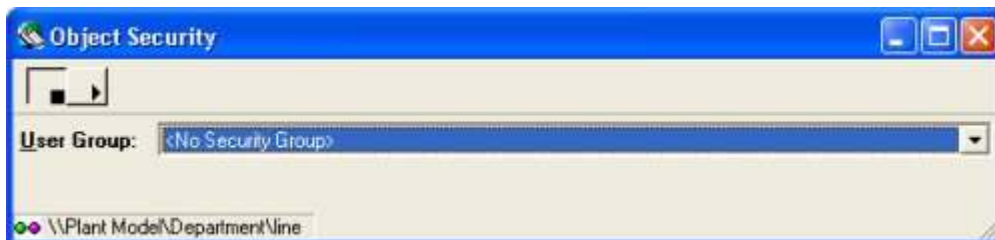
5. Click **OK** to complete the import.
6. To import additional objects, repeat steps 1 – 5.
7. Refresh the server.

## Object Security Dialog Box

The **Object Security** dialog box enables you to attach security groups to a particular object in the Plant Applications database. Any user who is not a member of the security group will not be able to make any changes to the object. By default, no security groups are assigned.

To use the Object Security dialog box:

1. In the Plant Applications Administrator tree, right-click on the object you want to apply security to and click **Change <object name> Security**. The **Object Security** dialog box appears.



2. Select a security group from the **User Group** list.
3. Close the **Object Security** dialog box.

## Specification History Viewer Window

The Specification History Viewer window enables you to see what changes were made to a specification, when the changes were made and who made the changes, if e-signature is enabled.

- **Effective Date:** The effective date is the date the specification value was entered.
- **Effective Time:** The effective time is the time of day the specification value was entered.
- **Expiration Date:** The expiration date is the date the specification value was changed.
- **Expiration Time:** The expiration time is the time of day the specification value was changed.

You can click the buttons on the toolbar to view or hide the various values for the specification limits.

The screenshot shows a window titled "Specification History Viewer" with a toolbar and a table of data. The table has the following columns: Effective Date, Effective Time, Expiration Date, Expiration Time, L Warn Limit, Target Limit, and U Warn Limit. The data rows are as follows:

Effective Date	Effective Time	Expiration Date	Expiration Time	L Warn Limit	Target Limit	U Warn Limit
11-Oct-05	10:01	<None>	<None>	45.00	50.00	65.00
11-Oct-05	08:46	11-Oct-05	10:01	40.00	50.00	65.00
11-Oct-05	07:30	11-Oct-05	08:46	35.00	50.00	65.00

## User Level Authentication Dialog Box

The User Level Authentication dialog box appears when the electronic signature option has been enabled on an object in Plant Applications. For example, if you have set the electronic signature level to User on a variable, this dialog box will appear when a test value is entered or edited.

Depending upon how electronic signature has been configured, you may be required to type your Windows user account user name and password or your Plant Applications user name and password.

The screenshot shows a dialog box titled "User Level Authentication - [usgbt16]". It contains a "Login Information" section with two input fields: "UserName:" and "Password:". At the bottom of the dialog are "OK" and "Cancel" buttons.