



Anark Core MBEWeb

GE Gas Power

July 22, 2020

History

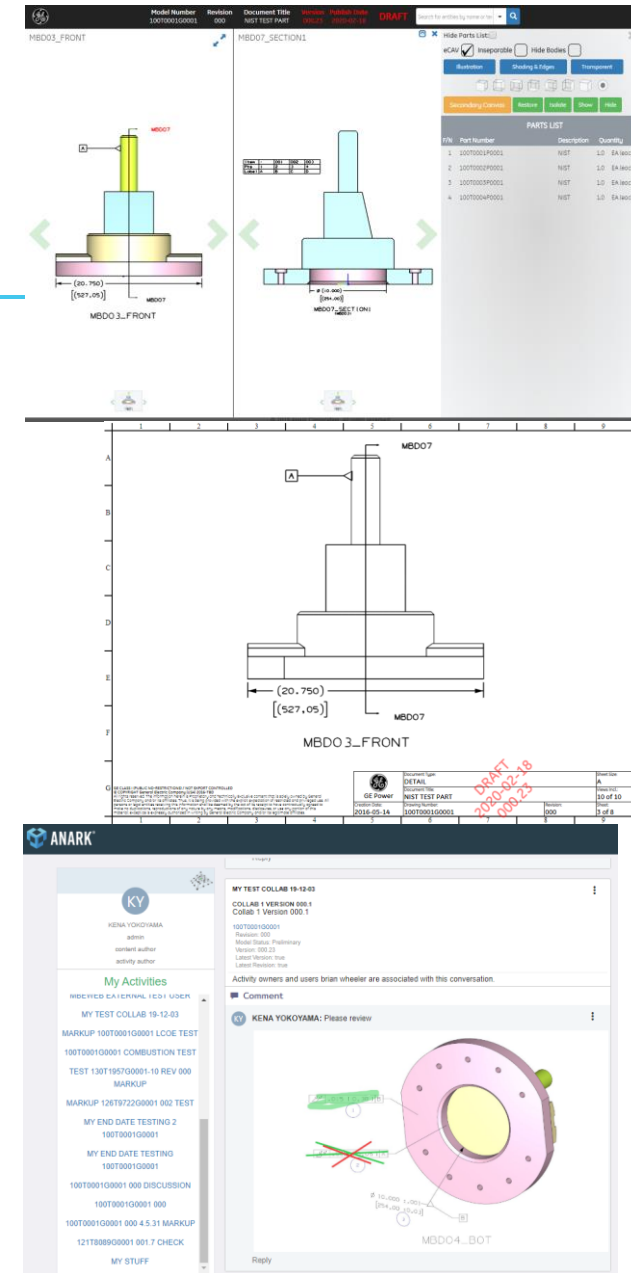
| Date | Author | Description of Changes | Revision |
|-------------|---------------|--|-----------------|
| 1/17/20 | Kena Yokoyama | Initial Release | 1.0 |
| 2/26/20 | Kena Yokoyama | Updated Why Anark Core MBEWeb slide | 1.1 |
| 5/28/20 | Kena Yokoyama | Updated for Production MBEWeb External | 1.2 |
| 6/22/20 | Kena Yokoyama | Updated for posting to external Supplier website | 1.3 |



Why Anark Core MBEWeb?

3D-PDF to Anark Core MBEWeb

| Feedback | 3D-PDF Status | Anark Core MBEWeb Capability |
|-------------------------|--------------------------------|--|
| Files too big | 3MB-1.2GB download | Preview & navigate w/o full download |
| Navigation too slow | Slower the bigger the file | 10x+ faster, 2D option |
| Can't search | Not in our template | By PMI type, text, point name, eCAV Balloon #, Rev Triangle |
| Can't open on my device | Computers need Adobe Reader XI | Viewable on business computer, tablet, smartphone |
| Difficult to navigate | 1 view at a time | Side by side w/ hyperlinks, thumbnails, search |
| Too much paper | 1 view per sheet | Flexible # of views/order, MBD Layout |
| Printing too slow | 1 page at a time | Printing now from saved 2D images |
| Markups impossible | Tedious | Collaborative, searchable, 2D option |
| New functionality | Need to republish | New functionality quickly applied to content w/o the need to republish |
| Support documents | Posted on Box | Linked in content and collaboration |



Allowed Data

- GE Internal Users and External Supply Chain users.
- **Class II Non-Export Controlled** content only. Restricted Class II such as PSM and Class III **are allowed**. Class IV and Export Controlled **are not allowed** in Anark Core MBEWeb.
Markups, comments and pictures added to Anark Core MBEWeb Collaboration must not include Class IV or Export Controlled information.
- **PLM/SDX Access and an Active PO, RFQ or SDX folder are required.** Because the content translated into Anark Core MBEWeb is managed by PLM, Anark Core MBEWeb access authenticates in PLM. If you have access to the CAD model and can download the 3DPDF from PLM/SDX, you will have access in Anark Core MBEWeb.



Accessing Anark Core MBEWeb

Content link in the PDDR for each Model-Based CAD Model

| Part Definition Data Report for - 100T0001G0001 rev 000 | | | | | | | | Wed Feb 13 16:46:52 EST 2019 | | | | | | | |
|---|-----|------------|---------------|----------|-----|-----------|----------|------------------------------|---------|-------------------------------------|-----------------------|---------|-----------------------------|-----------------|---|
| Level | F/N | BOM Prefix | Part Number | Part Rev | Qty | UOM | EID | Document Name | Doc Rev | Description | Type | State | Original / Replacement Part | Part Attributes | MBEWEB External Link |
| 1 | | | 100T0001G0001 | 0 | | EA (each) | | | | NIST TEST PART | Part | Release | | | |
| | | | | | | | CADModel | 100T0001G0001 | 0 | NIST TEST PART | UG Model | Release | | | https://mbe-ext.gepower.cc |
| | | | | | | | COMDOC | 348A9200 | M | APPLIED PRACTICES GENERAL MACHINING | GE Technical Document | Release | | | |
| 2 | 1 | | 100T0001P0001 | 0 | 1 | EA (each) | | | | NIST | Part | Release | | | |
| | | | | | | | CADModel | 100T0001P0001 | 0 | NIST | UG Model | Release | | | |
| | | | | | | | COMDOC | 348A9200 | M | APPLIED PRACTICES GENERAL MACHINING | GE Technical Document | Release | | | |
| 2 | 2 | | 100T0002P0001 | 0 | 1 | EA (each) | | | | NIST | Part | Release | | | |
| | | | | | | | CADModel | 100T0002P0001 | 0 | NIST | UG Model | Release | | | |
| | | | | | | | COMDOC | 348A9200 | M | APPLIED PRACTICES GENERAL MACHINING | GE Technical Document | Release | | | |
| 2 | 3 | | 100T0003P0001 | 0 | 1 | EA (each) | | | | NIST | Part | Release | | | |
| | | | | | | | CADModel | 100T0003P0001 | 0 | NIST | UG Model | Release | | | |
| | | | | | | | COMDOC | 348A9200 | M | APPLIED PRACTICES GENERAL MACHINING | GE Technical Document | Release | | | |
| 2 | 4 | | 100T0004P0001 | 0 | 1 | EA (each) | | | | NIST | Part | Release | | | |
| | | | | | | | CADModel | 100T0004P0001 | 0 | NIST | UG Model | Release | | | |
| | | | | | | | COMDOC | 348A9200 | M | APPLIED PRACTICES GENERAL MACHINING | GE Technical Document | Release | | | |

404 Not Found

nginx/1.12.2

If the Anark Core MBEWeb link results in an error, contact GE. The PDDR may have out of date links.



Anark Core MBEWeb Content

- Title block including name, rev, description, date published to Anark Core MBEWeb, classification, export status, copyright.
- ? Link to Help Documentation
- Search to filter to views that contain the searched content
- Quick Print to print to physical printer or 2DPDF
- Thumbnails for quick browsing. Click on a thumbnail to open the 3D interactive view
- Show 2D to navigate with slower connections

The screenshot displays the GE MBEWeb interface for a CAD model. At the top, there is a header with the GE logo and a search bar. Below the header, the model information is displayed: Model Number 100T0001G0001, Revision 000, Document Title NIST TEST PART, Version 000.23, Publish Date 2019-12-17, and Classification DRAFT. A 'Quick Print' button is visible on the right. The main content area shows the model name 'MBD01 PRIMARY' and a 'Show 2D' button. The model is displayed in a 3D view with callouts. To the right of the 3D view, there are 'NOTES' and a table of datum views. The 'NOTES' section contains seven numbered items. The datum view table lists D (MBD06_ISO), C (MBD05_TOP), B (MBD04_BOT), A (MBD03_FRONT), and DATUM (MODEL VIEW). Below the 3D view, there is a 2D view of the component and a table of revisions. The 2D view shows a cross-section of the component with dimensions and a datum label 'MBD07'. The revision table shows three revisions: 1 (LEGND), 2 (ADDED), and 3 (REVISED).

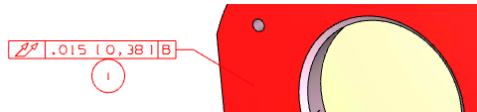
| REV | MBD VIEW | DESCRIPTION | DATE (YYYY-MM-DD) | APPROVAL |
|-----|----------|-------------|-------------------|-------------------------------|
| 1 | LEGND | | 2018-03-17 | OSAMU K. TOKOYAMA ENGINEER |
| 2 | ADDED | | | |
| 3 | REVISED | | | |

| D | MBD06_ISO |
|-------|-------------|
| C | MBD05_TOP |
| B | MBD04_BOT |
| A | MBD03_FRONT |
| DATUM | MODEL VIEW |

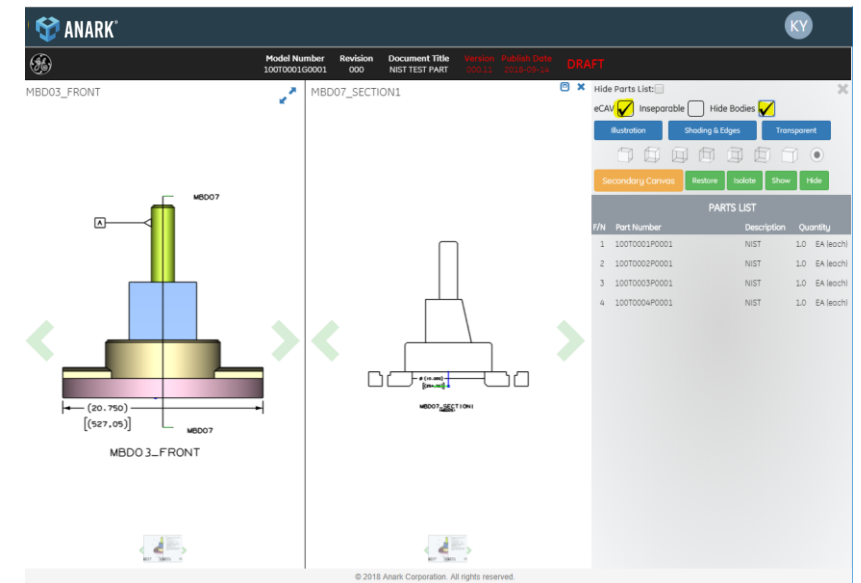
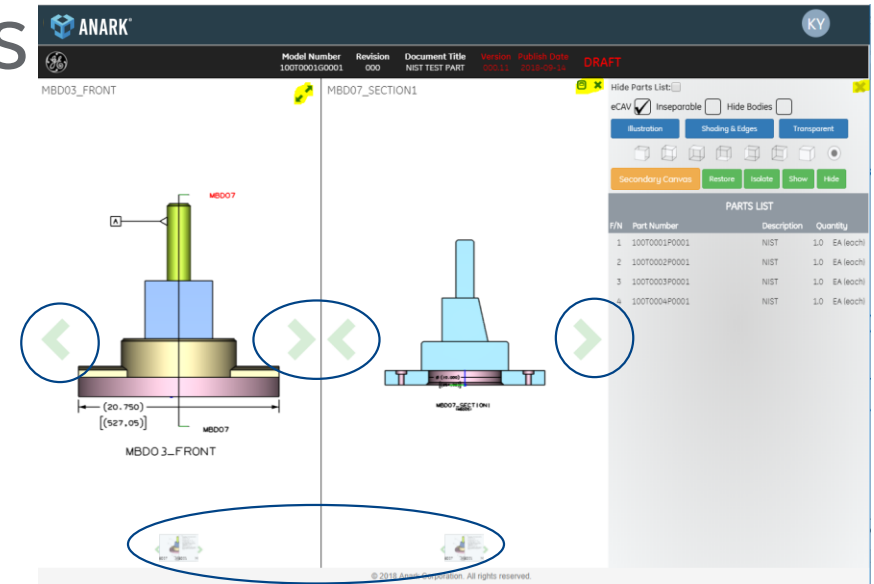


Anark Core MBEWeb 3D Views

- Arrows, Xs and buttons to navigate, open/close, expand/reduce, show/hide, orient and change display mode for views, bodies, background geometry, eCAV balloons
- X in upper right corner to return to thumbnails
- Secondary Canvas to open side-by-side views
- MBD and See Note Hyperlinks to open related section view, parent view, notes view in secondary canvas
- Select PMI to highlight associated objects just like in 3DPDF. Select eCAV balloons to highlight related PMI and referenced geometry.



- Select from parts list to highlight listed component
- Rotate the view with the right mouse button, zoom in or out with the scroll button and pan by holding down the scroll button.



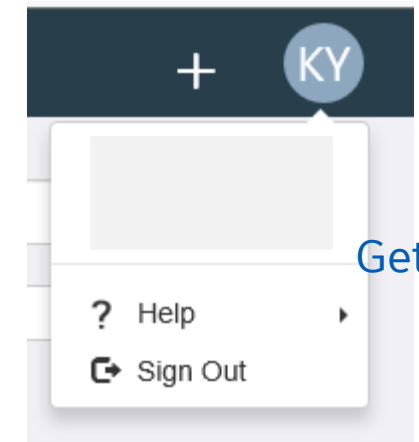
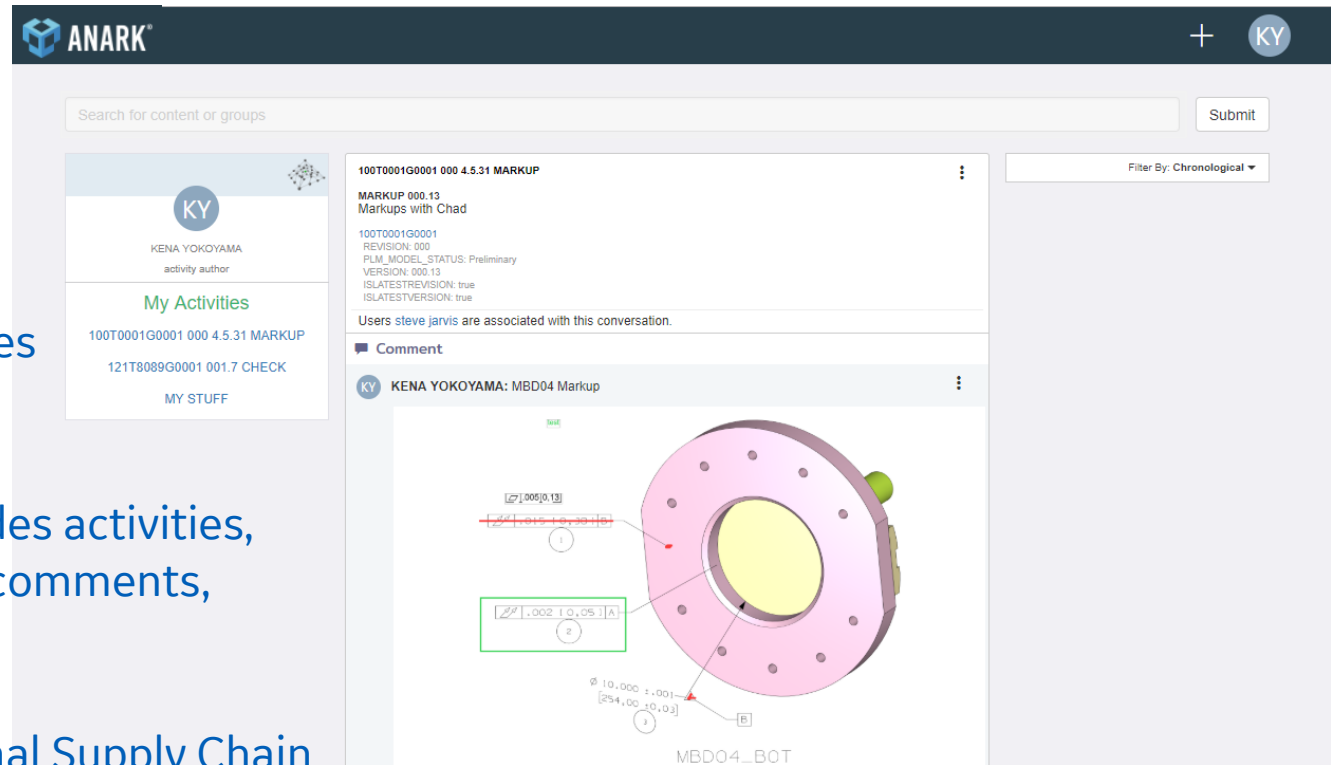
Anark Core MBEWeb Collaboration

Click on the Anark logo from any page to get to the Anark Core MBEWeb Collaboration Homepage

List of Activities

Activity Feed, includes activities, conversations and comments, newest to oldest.

GE will invite External Supply Chain users to collaborate



Training Video

- <https://www.ge.com/power/about/suppliers>

Includes MBEWeb Training video and how get access to PLM/SDX



Future Updates

- Streamlining collaboration workflows and email notifications (2020)
- Integration with new PLM version (2021)
- Measurement capability (2021)



Please provide feedback

- What is working, not working?
- What recommendations do you have?

