



Anark Core MBEWeb

GE Gas Power

July 22, 2020

History

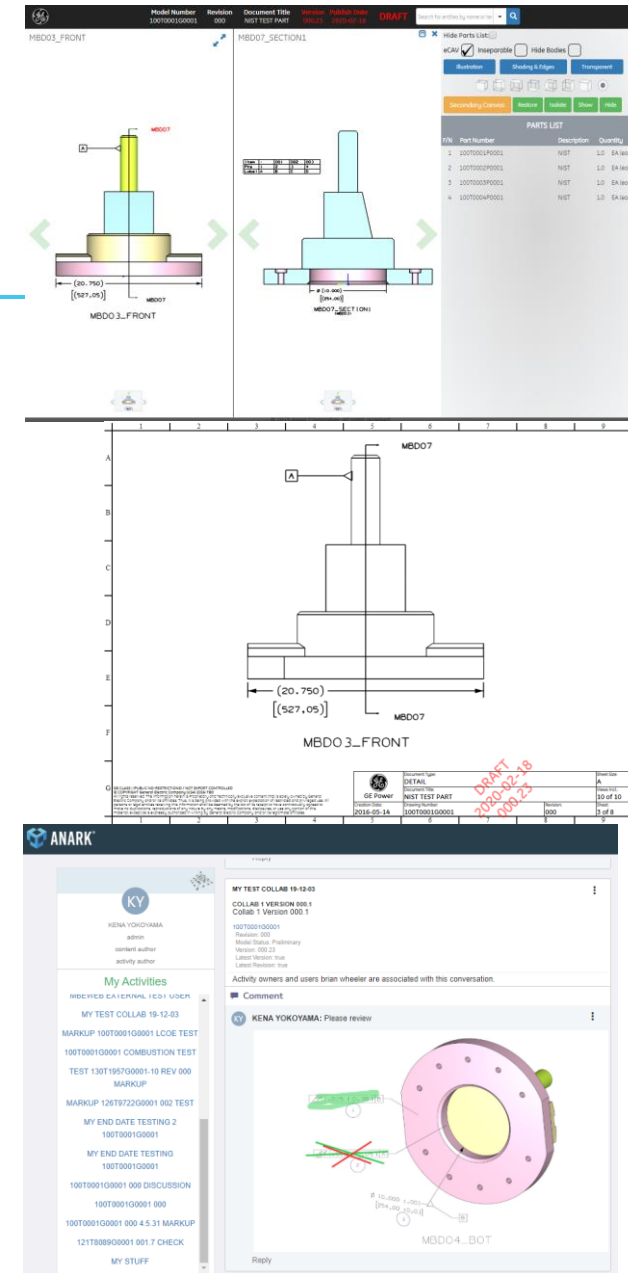
Date	Author	Description of Changes	Revision
1/17/20	Kena Yokoyama	Initial Release	1.0
2/26/20	Kena Yokoyama	Updated Why Anark Core MBEWeb slide	1.1
5/28/20	Kena Yokoyama	Updated for Production MBEWeb External	1.2
6/22/20	Kena Yokoyama	Updated for posting to external Supplier website	1.3



Why Anark Core MBEWeb?

3D-PDF to Anark Core MBEWeb

Feedback	3D-PDF Status	Anark Core MBEWeb Capability
Files too big	3MB-1.2GB download	Preview & navigate w/o full download
Navigation too slow	Slower the bigger the file	10x+ faster, 2D option
Can't search	Not in our template	By PMI type, text, point name, eCAV Balloon #, Rev Triangle
Can't open on my device	Computers need Adobe Reader XI	Viewable on business computer, tablet, smartphone
Difficult to navigate	1 view at a time	Side by side w/ hyperlinks, thumbnails, search
Too much paper	1 view per sheet	Flexible # of views/order, MBD Layout
Printing too slow	1 page at a time	Printing now from saved 2D images
Markups impossible	Tedious	Collaborative, searchable, 2D option
New functionality	Need to republish	New functionality quickly applied to content w/o the need to republish
Support documents	Posted on Box	Linked in content and collaboration



Allowed Data

- GE Internal Users and External Supply Chain users.
- **Class II Non-Export Controlled** content only. Restricted Class II such as PSM and Class III **are allowed**. Class IV and Export Controlled **are not allowed** in Anark Core MBEWeb.
Markups, comments and pictures added to Anark Core MBEWeb Collaboration must not include Class IV or Export Controlled information.
- **PLM/SDX Access and an Active PO, RFQ or SDX folder are required.** Because the content translated into Anark Core MBEWeb is managed by PLM, Anark Core MBEWeb access authenticates in PLM. If you have access to the CAD model and can download the 3DPDF from PLM/SDX, you will have access in Anark Core MBEWeb.



Accessing Anark Core MBEWeb

Content link in the PDDR for each Model-Based CAD Model

Part Definition Data Report for - 100T0001G0001 rev 000								Wed Feb 13 16:46:52 EST 2019							
Level	F/N	BOM Prefix	Part Number	Part Rev	Qty	UOM	EID	Document Name	Doc Rev	Description	Type	State	Original / Replacement Part	Part Attributes	MBEWEB External Link
1			100T0001G0001	0		EA (each)				NIST TEST PART	Part	Release			
							CADModel	100T0001G0001	0	NIST TEST PART	UG Model	Release			https://mbe-ext.gepower.cc
							COMDOC	348A9200	M	APPLIED PRACTICES GENERAL MACHINING	GE Technical Document	Release			
2	1		100T0001P0001	0	1	EA (each)				NIST	Part	Release			
							CADModel	100T0001P0001	0	NIST	UG Model	Release			
							COMDOC	348A9200	M	APPLIED PRACTICES GENERAL MACHINING	GE Technical Document	Release			
2	2		100T0002P0001	0	1	EA (each)				NIST	Part	Release			
							CADModel	100T0002P0001	0	NIST	UG Model	Release			
							COMDOC	348A9200	M	APPLIED PRACTICES GENERAL MACHINING	GE Technical Document	Release			
2	3		100T0003P0001	0	1	EA (each)				NIST	Part	Release			
							CADModel	100T0003P0001	0	NIST	UG Model	Release			
							COMDOC	348A9200	M	APPLIED PRACTICES GENERAL MACHINING	GE Technical Document	Release			
2	4		100T0004P0001	0	1	EA (each)				NIST	Part	Release			
							CADModel	100T0004P0001	0	NIST	UG Model	Release			
							COMDOC	348A9200	M	APPLIED PRACTICES GENERAL MACHINING	GE Technical Document	Release			

404 Not Found

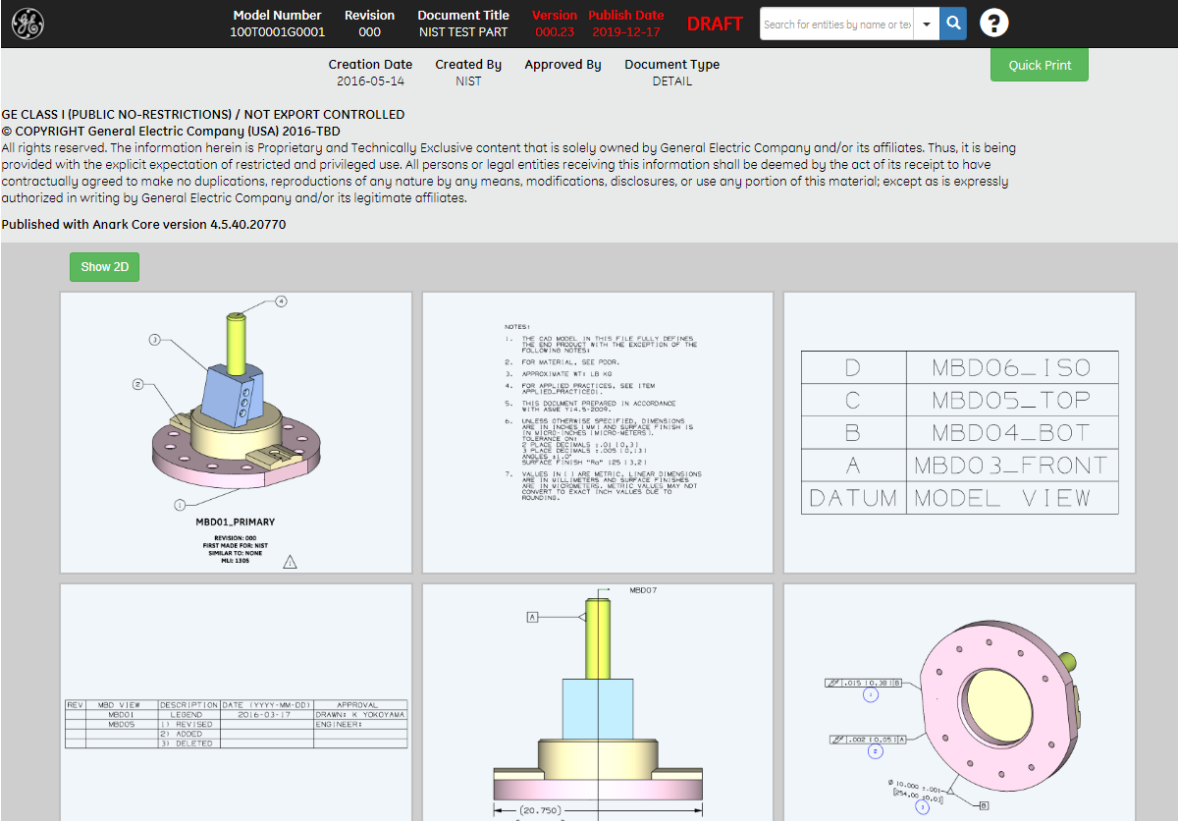
nginx/1.12.2

If the Anark Core MBEWeb link results in an error, contact GE. The PDDR may have out of date links.



Anark Core MBEWeb Content

- Title block including name, rev, description, date published to Anark Core MBEWeb, classification, export status, copyright.
- ? Link to Help Documentation
- Search to filter to views that contain the searched content
- Quick Print to print to physical printer or 2DPDF
- Thumbnails for quick browsing. Click on a thumbnail to open the 3D interactive view
- Show 2D to navigate with slower connections



The screenshot displays the GE MBEWeb interface for a CAD model. At the top, there is a header with the GE logo and metadata: Model Number 100T0001G0001, Revision 000, Document Title NIST TEST PART, Version 000.23, Publish Date 2019-12-17, and a DRAFT status. A search bar and a 'Quick Print' button are also visible. Below the header, the document is identified as 'GE CLASS I (PUBLIC NO-RESTRICTIONS) / NOT EXPORT CONTROLLED' and '© COPYRIGHT General Electric Company (USA) 2016-TBD'. A disclaimer states that the information is proprietary and technically exclusive content owned by GE. The document is published with Anark Core version 4.5.40.20770.

The main content area shows a 3D model of a component labeled 'MBD01 PRIMARY'. The model is shown in a perspective view with a yellow shaft and a blue base. A 'Show 2D' button is located above the model. To the right of the model, there are 'NOTES' and a table of views.

NOTES:

1. THE CAD MODEL IN THIS FILE FULLY DEFINES THE 3D OBJECT WITH THE EXCEPTION OF THE FOLLOWING NOTES.
2. FOR MATERIAL, SEE ROOM.
3. APPROXIMATE WT: LB 40
4. FOR APPLIED PRACTICES, SEE ITEM APPLIED PRACTICES.
5. THIS DOCUMENT PREPARED IN ACCORDANCE WITH ASME Y14.5-2009.
6. UNLESS OTHERWISE SPECIFIED, DIMENSIONS ARE IN INCHES UNLESS SPECIFIED FINISH IS IN MICRO-INCHES (1 MICRO-METER = 0.0000254 INCHES).
7. SURFACE FINISH: 1. SURF 1: 3.2 (1) SURFACE FINISH: 2. SURF 2: 3.2 (1) SURFACE FINISH: 3. SURF 3: 3.2 (1)

Table of Views:

D	MBD06_ISO
C	MBD05_TOP
B	MBD04_BOT
A	MBD03_FRONT
DATUM	MODEL VIEW

Below the model, there is a revision table:

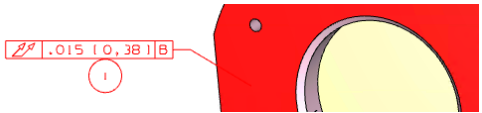
REV	MBD VIEW	DESCRIPTION	DATE (YYYY-MM-DD)	APPROVAL
MBD01	LEGEND		2016-03-17	OSAMU K. TOKOYAMA
1	REVISED			ENGINEER
2	ADDED			
3	DELETED			

At the bottom, there are two 2D views: a front view (A) and a top view (C). The front view shows a shaft with a diameter of 0.750 inches. The top view shows a circular flange with a diameter of 1.625 inches and a hole diameter of 1.000 inches. The top view also shows a hole diameter of 0.500 inches and a hole diameter of 0.500 inches.

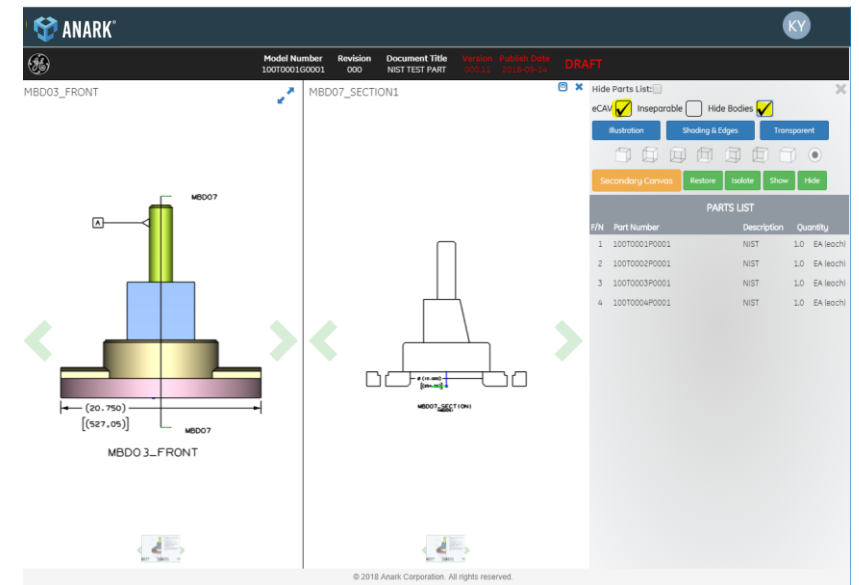
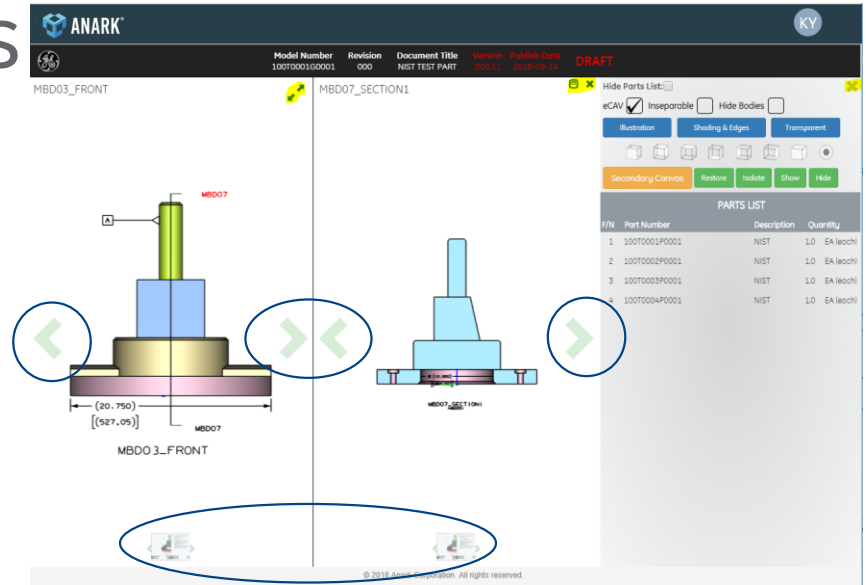


Anark Core MBEWeb 3D Views

- Arrows, Xs and buttons to navigate, open/close, expand/reduce, show/hide, orient and change display mode for views, bodies, background geometry, eCAV balloons
- X in upper right corner to return to thumbnails
- Secondary Canvas to open side-by-side views
- MBD and See Note Hyperlinks to open related section view, parent view, notes view in secondary canvas
- Select PMI to highlight associated objects just like in 3DPDF. Select eCAV balloons to highlight related PMI and referenced geometry.



- Select from parts list to highlight listed component
- Rotate the view with the right mouse button, zoom in or out with the scroll button and pan by holding down the scroll button.



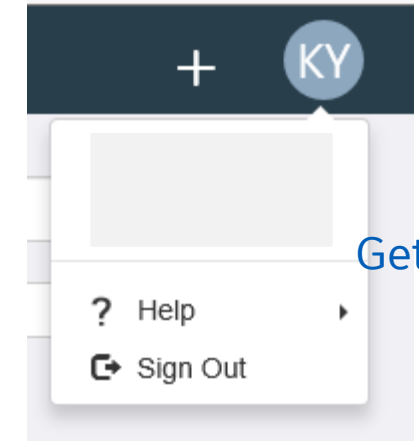
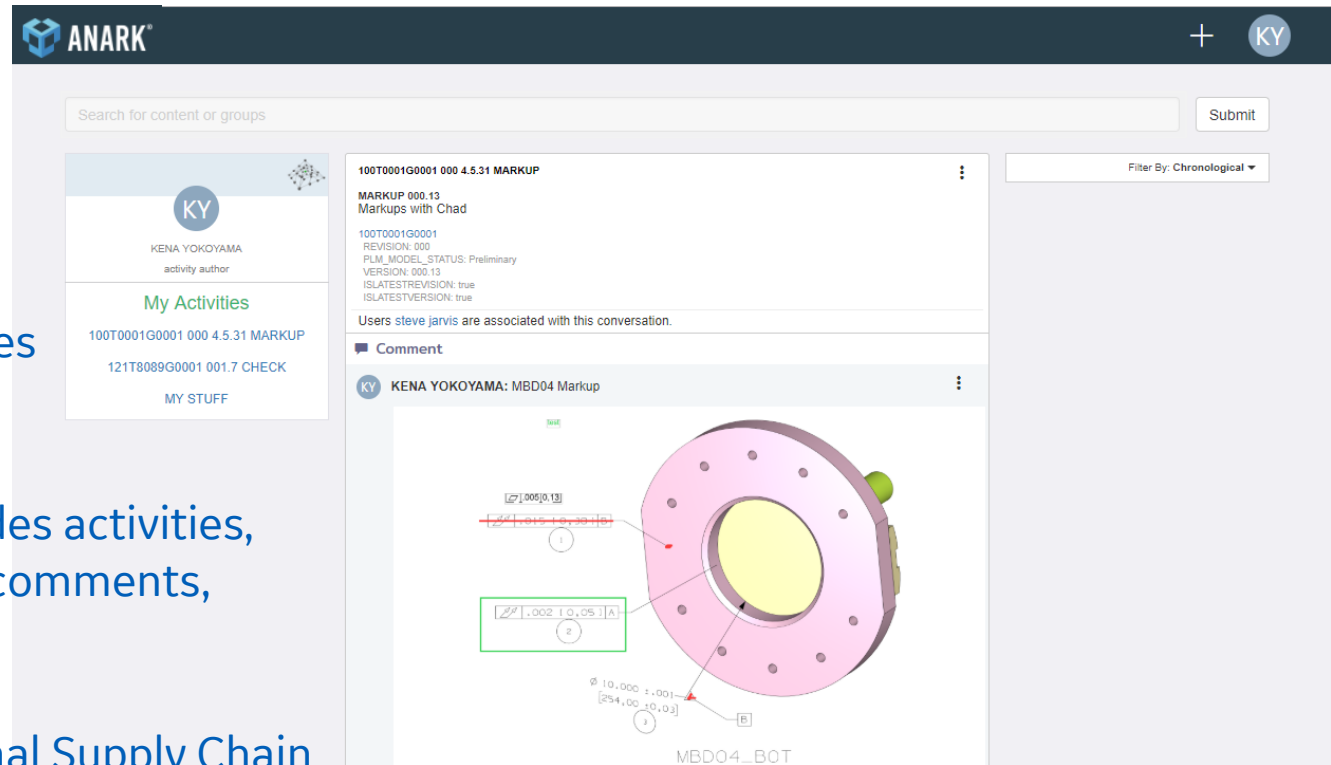
Anark Core MBEWeb Collaboration

Click on the Anark logo from any page to get to the Anark Core MBEWeb Collaboration Homepage

List of Activities

Activity Feed, includes activities, conversations and comments, newest to oldest.

GE will invite External Supply Chain users to collaborate



Training Video

- <https://www.ge.com/power/about/suppliers>

Includes MBEWeb Training video and how get access to PLM/SDX



Future Updates

- Streamlining collaboration workflows and email notifications (2020)
- Integration with new PLM version (2021)
- Measurement capability (2021)



Please provide feedback

- What is working, not working?
- What recommendations do you have?

