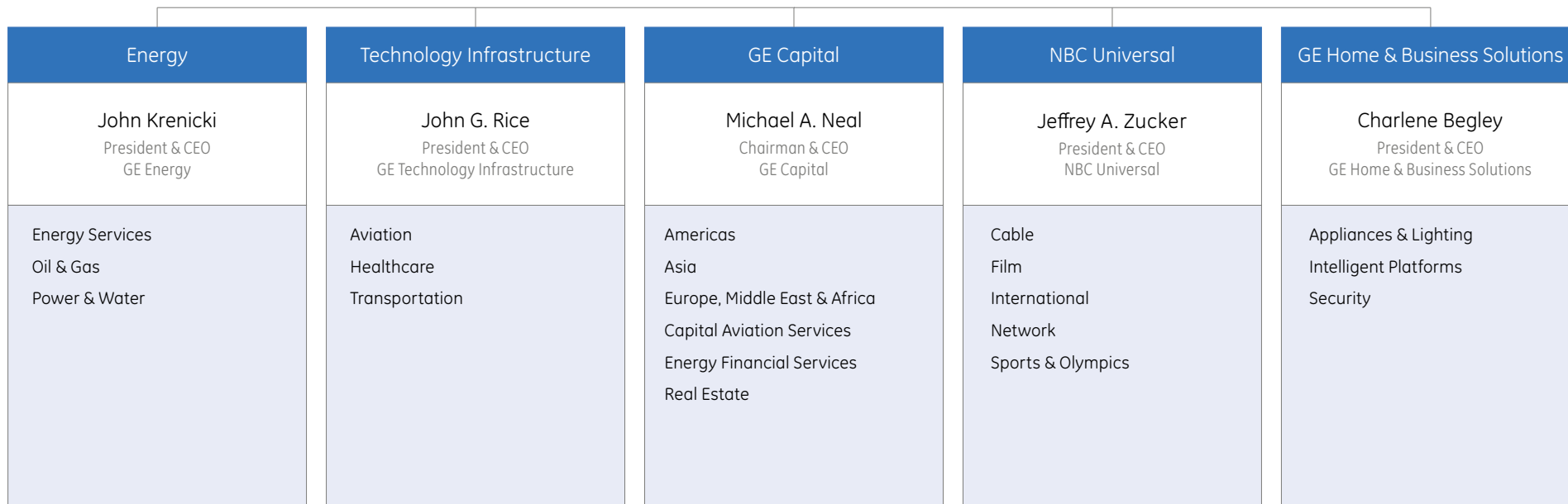
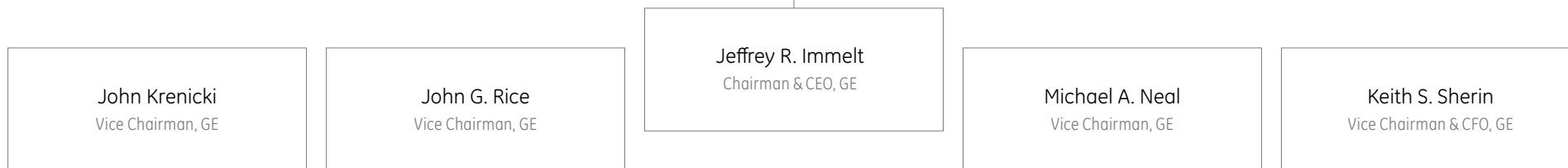
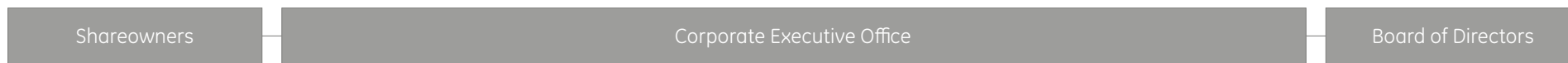




imagination at work

GE Company Organization Chart

LAST UPDATE JANUARY 2010



Corporate Staff

Business Development	Commercial & Communications	Information Technology	Finance	Global Research	Human Resources	International	Legal
Pamela Daley	Elizabeth J. Comstock	Gary M. Reiner	Keith S. Sherin	Mark M. Little	John F. Lynch	Ferdinando Beccalli-Falco	Brackett B. Denniston III