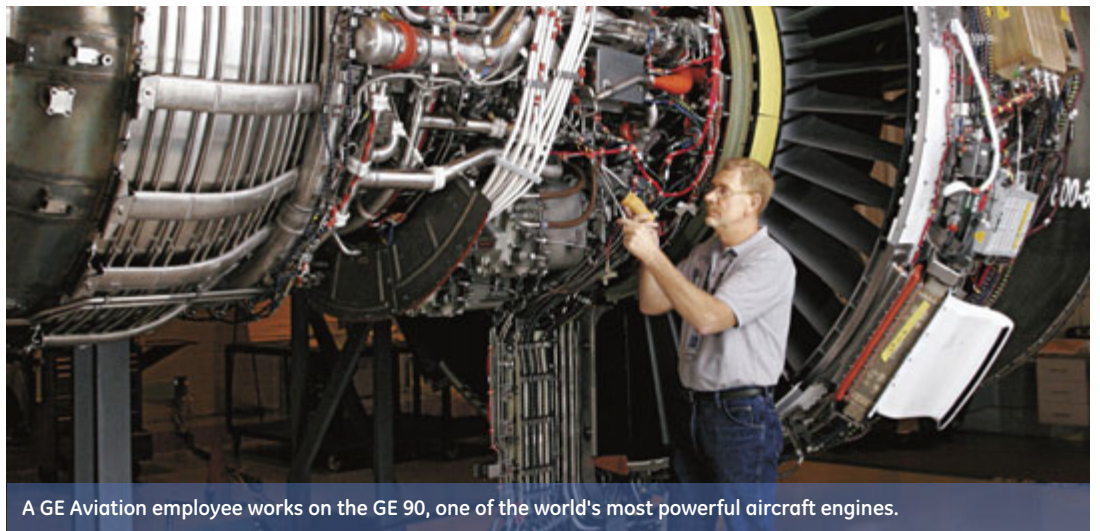


GE Advanced Manufacturing and
Software Technology Center

begin an extraordinary tomorrow
today.



GE is a leading innovator in x-ray technology.



A GE Aviation employee works on the GE 90, one of the world's most powerful aircraft engines.

make a difference with GE

If you thrive on being challenged, interacting with diverse technical teams and using your expertise to imagine, innovate and explore, then GE's new Advanced Manufacturing and Software Technology Center in Van Buren Township, Michigan, is the place for you!

Here, some of GE's best and brightest technical and research experts will come together and use cutting-edge technologies to solve some of the world's toughest problems.

Realize your potential today!

Today, GE power generation equipment will create a quarter of the world's electricity.

we are GE

A global infrastructure, finance, and media company taking on the world's toughest challenges. And we are taking the strengths that have made us an industry leader and putting them to work in the service of a new era of global business.

How are we doing this? By adhering to our credos:

investing in you Global leaders don't just happen. That's why we invest \$1 billion annually in our people and leadership development. Today, GE employees around the world will complete more than three million training courses. Add to that our amazing tuition reimbursement benefits, and you can see we take our investment in you seriously.

driving innovation We can't help it – we have a passion for innovation. And because we are, first and foremost, a technology company, we will continue to invest in research and develop groundbreaking solutions for our customers and communities. Today, we're investing \$15 billion to develop over 2,000 global patents.

being global We embrace a global perspective on everything we do. Thinking “How can what we're doing serve the world at large?” opens the doors to imagination, allows us to share our innovation with the world, and is just plain smart business. For example, with our water purification technology, we're reclaiming 1.7 billion gallons of water worldwide.

creating a better world There's nothing more important than the planet we live on and the people we share it with. GE is making a positive impact today through our healthymagination and ecomagination initiatives, creating innovative solutions to health issues and environmental challenges. We're already increasing over 100 million Americans' access to healthcare innovation and information.

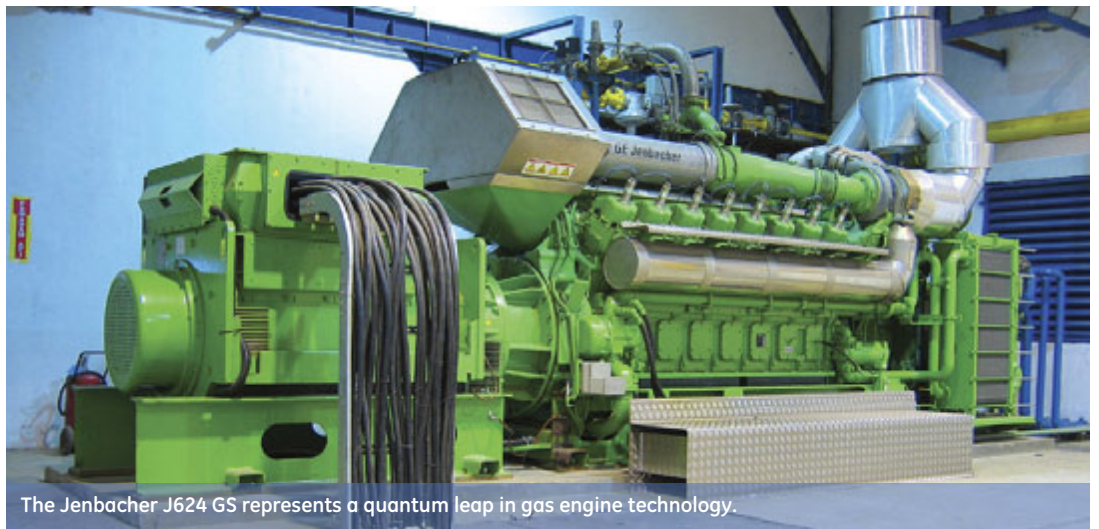
Today, GE is attracting the world's best and brightest talent and growing stronger.

Join us, and you'll launch a career that matches your interests, working with talented people you can respect and who respect and empower you in return.

Together, we will create a better future. Join GE in making tomorrow extraordinary. **Today**.



Through research, GE is focused on revolutionizing healthcare treatments.



The Jenbacher J624 GS represents a quantum leap in gas engine technology.

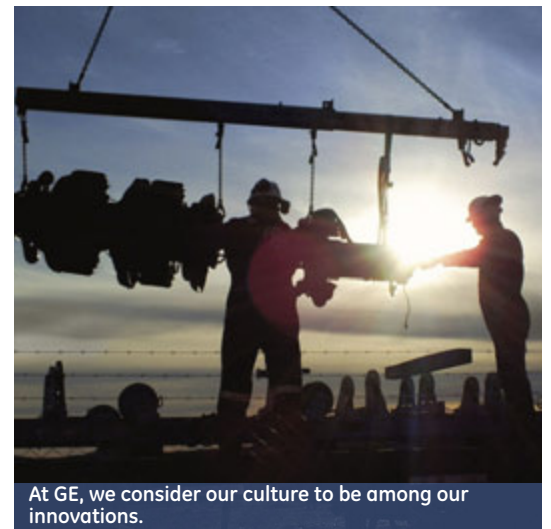
investing in you

GE values its investment in you, and wants you to feel valued and appreciated for all that you bring to the company. A competitive salary is great, but GE offers its employees so much more. GE is all about building a relationship with you by actively committing to your personal development. Through our comprehensive GE benefits package and our Work/Life Connections program, we aim to enhance not just your work, but your everyday life, too:

- **Tuition Reimbursement:** Employees can take advantage of tuition reimbursement benefits to help improve their skills, grow their career, or get a loan to help pay for their family's higher education.
- **Medical and Dental:** GE offers comprehensive medical and dental coverage.
- **Savings:** GE's 401K and Savings & Security Program are powerful tools that help you save for the future.
- **Sharing Talent:** New employees have the option of deferring their offer from GE to spend two years teaching in under-funded schools through GE's partnership with Teach for America.
- **Employee Discounts:** The online Marketplace offers hundreds of everyday discounts, savings at local shops, seasonal shopping guides, and promotions for GE employees.



At GE, learning is how we come together to embrace change, develop skills to change things for the better, and get energized about it all.



At GE, we consider our culture to be among our innovations.

Today, GE Evolution locomotives will save so much fuel, it's like taking 43,000 cars off the road.

driving innovation

At GE, we live to take a big swing at innovation, and that's where the Imagination Breakthrough program comes in. Each month, our CEO, Jeff Immelt, reviews eight to twelve proposals worthy of competing for internal "venture capital." That's right: if you've got a big idea, you can go right to the boss. Since the program's inception in mid-2003, Immelt has given the nod to hundreds of ideas that have driven over \$40 billion in revenues. By driving organic growth and discovering untapped ideas, Imagination Breakthroughs will drive double-digit, billion-dollar growth in added revenue over the next three years. From Thomas Edison's first commercially viable light bulb to the first X-ray machines, we've continued to redefine what's possible for the world.

In nanotechnology, bioscience, and energy, the brightest scientific minds are at GE Global Research, the world's first corporate R&D lab. To learn more about how GE is working to transform our world through innovation, see ge.com/innovation.

being global

GE serves customers in over 100 countries and employs over 300,000 people worldwide. We are an Equal Opportunity Employer that operates globally and hires locally. Being a global leader is a privilege that demands a code of conduct, and is a responsibility we take seriously by giving back to the communities and environment that we have to thank for our success. To learn more about GE's businesses around the globe, see ge.com/company. GE is a committed corporate citizen, which is why we live by high standards in all that we do through our environment, health, and safety regulations, international human rights standards, Lean Six Sigma quality control and operational excellence, and leadership training.

Here are just a few other ways GE leads the charge for corporate responsibility:

- **Emerging Markets:** Taking a holistic approach to growing revenue while remaining true to the responsibilities of citizenship.
- **Compliance and Governance:** Non-negotiable aspects of GE's operations.
- **Environment, Health & Safety:** Focal points of GE's operational systems and metrics to track performance.
- **Volunteerism:** Over an estimated one million volunteer hours in 2008, and \$200 million in contributions.



GE's high-tech, high-touch video conferencing network connects employees around the globe.



GE employees take on some of the world's toughest challenges.

Today,
GE Healthcare
technology will help
doctors save nearly
3,000 lives.

creating a better world

GE is all about putting our strength and global reach to work to make a difference through innovations that benefit humankind and our environment. Through our healthymagination and ecomagination initiatives, we create solutions that increase over 100 million Americans' access to healthcare innovation and information, and solve today's environmental challenges.

healthymagination is committed to changing the way we approach healthcare, with more than 100 innovations all focused on addressing three critical needs: lowering costs, touching more lives and improving quality. Discover more at healthymagination.com.

ecomagination is GE's commitment to providing solutions to environmental challenges by investing in clean R&D, reducing emissions and improving efficiency. Home improvements inspired by ecomagination include solar energy, home improvement finances, energy efficient lighting and appliances, and our energy-monitoring dashboard. Discover more at ecomagination.com.

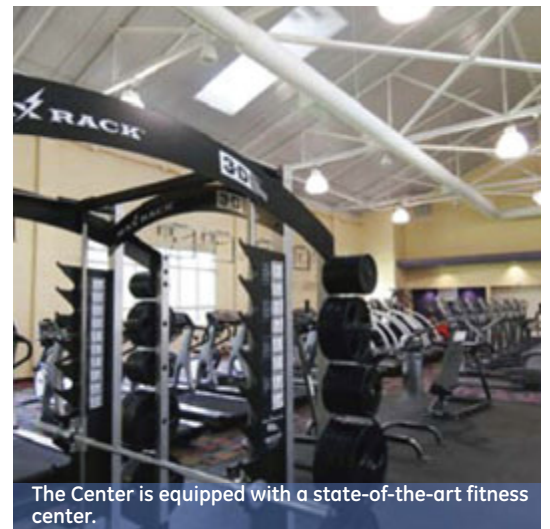
And the great thing about these commitments is that they drive growth for GE while making a lasting, positive impression on the world. It's a long road to changing healthcare and saving the planet, but every step of the way at GE is a beautiful, innovative thing.

The way we see it is:

ecomagination + **healthymagination** = **GE for a better world**
for a healthy planet for healthy people for generations to come



The Center is surrounded by miles of tree-covered walking trails.



The Center is equipped with a state-of-the-art fitness center.

join some of GE's best and brightest

Today, you've arrived at the point in the road where preparation meets opportunity and it's time to decide where you will invest in your future. What can you do now that will set the wheels in motion, open doors and make you stand out in a crowd?

It's simple: start at GE. Are you ready for the challenge?



From jet engines to renewable energy, medical imaging and more, employees at GE's Advanced Manufacturing and Software Technology Center will turn imaginative ideas into solutions to help businesses, large and small.

Join us at this world-class facility where you'll find endless opportunities to cultivate your expertise. Take advantage of the tremendous learning opportunities, become part of a culture committed to driving innovation, and enjoy the state-of-the-art amenities like next-generation virtual meeting technology, collaborative workspaces, a fitness center, full-service cafeteria and more that this Center has to offer.



The Center's interior enhances openness, innovation and collaboration.



The Center's sustainable design is eco-friendly and LEED certified.

information technologists with proven know-how

GE is committed to leveraging information technology, building long-term relationships, delivering innovative solutions and driving customer satisfaction. The Advanced Manufacturing and Software Technology Center will bring together talented, imaginative technical experts in the areas of:

- **Application and Enterprise Architecture** – Design and configure IT environments across all layers of hardware and software components to enable GE’s applications.
- **Business Solutions** – Define, design, develop and install custom and packaged business application software working with vendors and internal GE clients.
- **Computing Operations** – Provide system administration and support for midrange server/storage systems.
- **Data Management** – Design and build transactional and reporting data structures, including relational databases, data warehouses and other data sources.
- **End User Services** – Provide end-user support for PCs, laptops, PDAs and our “core load” of common software run on these devices.
- **Enterprise Services, OS and Servers** – Maintain and support operating systems, collaboration and messaging systems and specialized server hardware.
- **Information Security** – Protect GE’s information assets from internal and external threats.
- **Networking Services** – Configure, install and secure all hardware and software that enables information sharing (LAN, WAN, firewall, internet and intranet, voice services).



At GE, you can cultivate your expertise and apply your specialized technical know-how.



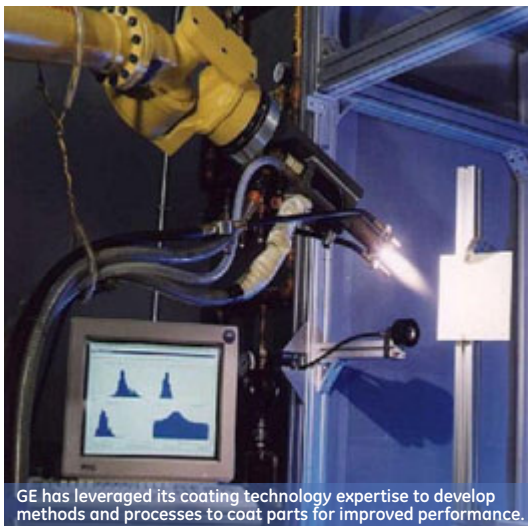
Work with diverse leaders in advanced technologies.

Today, more than 3,000 technologists at our four GE Global Research Centers around the world deliver innovations to redefine what's possible.

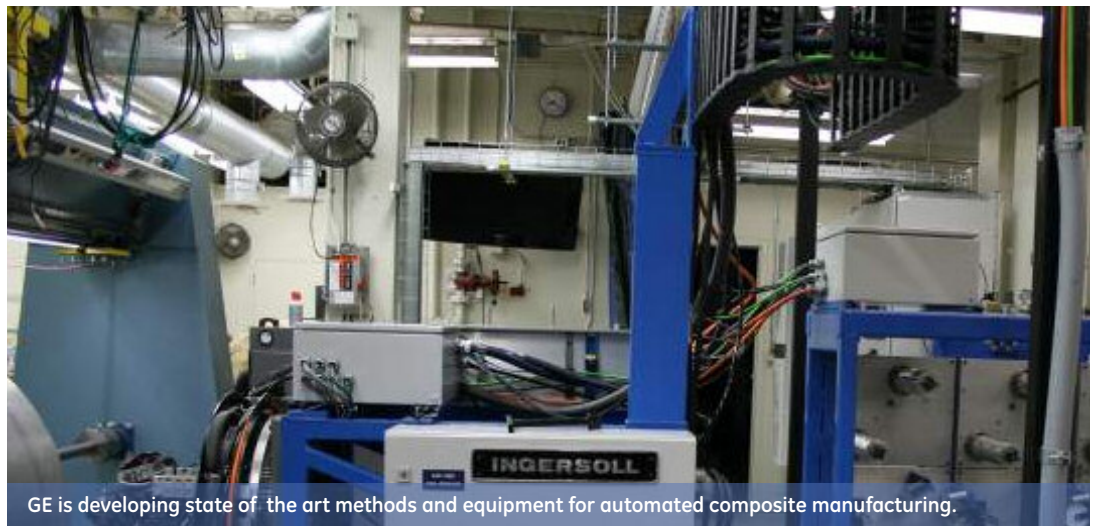
researchers with a passion for innovation

GE's Global Research network, one of the world's largest and most diverse industrial research labs, is redefining what's possible in the world of advanced manufacturing technologies. The Center in Michigan will bring together researchers to work on production-ready advanced manufacturing technologies; help drive the manufacturing of full-scale components, focusing on new product introductions and cost reduction; and assist in integrating key suppliers and strategic partners. Focus areas of technical expertise at the Center will include:

- **Advanced Machining** – Milling, grinding, electro-machining, micro-machining.
- **Automation and Robotics** – Laser and arc welding, automatic placement for composites manufacturing, coating processes.
- **Composites** – Resin transfer molding, infusion processes, cure processes for composites.
- **Software Development** – Programming, optimization and control (intelligent manufacturing).
- **Data/Analytics** – Sensors and monitoring capabilities.



GE has leveraged its coating technology expertise to develop methods and processes to coat parts for improved performance.



GE is developing state of the art methods and equipment for automated composite manufacturing.



 Current GE buildings

*Construction plans for GE's new research and development facility coming soon.



Located along I-275 @ Ecorse Road, the campus provides convenient access to major sites throughout Southeast Michigan and beyond:

Airports

- Detroit Metropolitan
 - 10 minutes
- Willow Run
 - 10 minutes

Cities

- Dearborn
 - 10 minutes
- Downtown Detroit
 - 20 minutes
- Ann Arbor
 - 20 minutes
- Toledo, Ohio
 - 25 minutes
- Southfield
 - 35 minutes
- Troy
 - 45 minutes
- Auburn Hills
 - 60 minutes
- Detroit's Northern Suburbs
 - 30 minutes

Address

1 Village Center Drive,
Van Buren Township, MI 48111

Directions

From Detroit Metropolitan Airport: Take I-275 North to exit 20 (Ecorse Road toward Romulus). Turn right at Ecorse Road. Turn right on Visteon Road. Turn right at Village Center Drive.

today, you can learn about GE's businesses at ge.com/company

today, you can read the latest news on GE at gereports.com

today, you can start your career at ge.com/amstc

Just imagine what you'll do
tomorrow.



Solar panels provide energy using earth's most abundant resource – sunlight.



GE Transportation's innovative, hybrid locomotive.